

## Iba1 antibody [HL22-RT]

Cat. No. GTX635400

Host	Rat
Clonality	Monoclonal
Isotype	IgG1
Applications	WB, ICC/IF, IHC-P, IHC-Fr
Reactivity	Human, Mouse, Rat

References ( 3 )

Package

100 µl, 25 µl

## Applications

## Application Note

\*Optimal dilutions/concentrations should be determined by the researcher.

Suggested dilution	Recommended dilution
WB	1:500
ICC/IF	Assay dependent
IHC-P	Assay dependent
IHC-Fr	Assay dependent

Not tested in other applications.

**Observed MW (kDa)** 17 kDa.

## Properties

Form	Liquid
Buffer	PBS
Preservative	No preservatives
Storage	Store as concentrated solution. Centrifuge briefly prior to opening vial. For short-term storage (1-2 weeks), store at 4°C. For long-term storage, aliquot and store at -20°C or below. Avoid multiple freeze-thaw cycles.
Concentration	2 mg/ml (Please refer to the vial label for the specific concentration.)
Immunogen	Carrier-protein conjugated synthetic peptide encompassing a sequence within the C-terminus region of human Iba1. The exact sequence is proprietary.
Purification	Affinity purified by Protein G.
Conjugation	Unconjugated



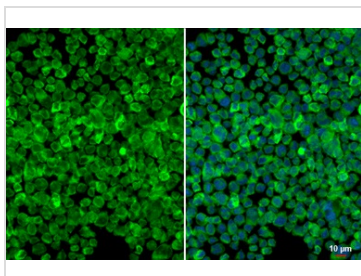
For full product information, images and publications, please visit our [website](#).

For laboratory research use only. Not for any clinical, therapeutic, or diagnostic use in humans or animals. Not for animal or human consumption.

## Note

Purchasers shall not, and agree not to enable third parties to, analyze, copy, reverse engineer or otherwise attempt to determine the structure or sequence of the product.

## DATA IMAGES



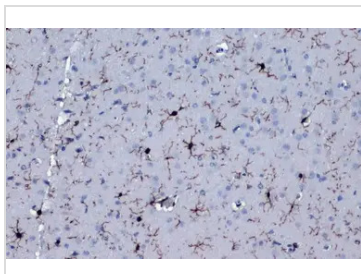
### GTX635400 ICC/IF Image

Iba1 antibody [HL22-RT] detects Iba1 protein at cytoplasm by immunofluorescent analysis.

Sample: THP-1 cells were fixed in 4% paraformaldehyde at RT for 15 min.

Green: Iba1 stained by Iba1 antibody [HL22-RT] (GTX635400) diluted at 1:500.

Blue: Fluoroshield with DAPI (GTX30920).



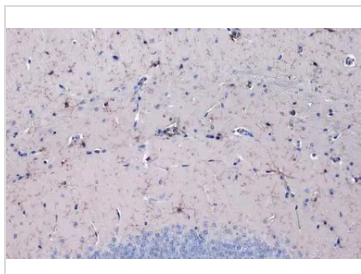
### GTX635400 IHC-P Image

Iba1 antibody [HL22-RT] detects Iba1 protein at cell membrane and cytoplasm by immunohistochemical analysis.

Sample: Paraffin-embedded rat brain.

Iba1 stained by Iba1 antibody [HL22-RT] (GTX635400) diluted at 1:500.

Antigen Retrieval: Citrate buffer, pH 6.0, 15 min



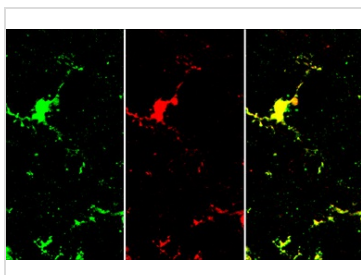
### GTX635400 IHC-P Image

Iba1 antibody [HL22-RT] detects Iba1 protein at cell membrane and cytoplasm by immunohistochemical analysis.

Sample: Paraffin-embedded mouse brain.

Iba1 stained by Iba1 antibody [HL22-RT] (GTX635400) diluted at 1:500.

Antigen Retrieval: Citrate buffer, pH 6.0, 15 min



### GTX635400 IHC-Fr Image

Iba1 antibody [HL22-RT] detects Iba1 protein by immunohistochemical analysis.

Sample: Frozen-sectioned mouse brain.

Green: Iba1 stained by Iba1 antibody [HL22] (GTX635363) diluted at 1:100.

Red: Iba1 stained by Iba1 antibody [HL22-RT] (GTX635400) diluted at 1:100.

Blue: Fluoroshield with DAPI (GTX30920).



For full product information, images and publications, please visit our [website](https://www.genetex.com).