

Sodium/Potassium ATPase alpha 1 antibody [HL114]

Cat. No. GTX635461

Host	Rabbit
Clonality	Monoclonal
Isotype	IgG
Applications	WB, ICC/IF, IHC-P
Reactivity	Human, Mouse, Rat, Drosophila

References (2)

Package

100 µl, 25 µl

Applications

Application Note

*Optimal dilutions/concentrations should be determined by the researcher.

Suggested dilution	Recommended dilution
WB	1:500-1:3000
ICC/IF	Assay dependent
IHC-P	Assay dependent

Not tested in other applications.

Observed MW (kDa) 110-120 kDa.

Properties

Form	Liquid
Buffer	PBS
Preservative	No preservative
Storage	Store as concentrated solution. Centrifuge briefly prior to opening vial. For short-term storage (1-2 weeks), store at 4°C. For long-term storage, aliquot and store at -20°C or below. Avoid multiple freeze-thaw cycles.
Concentration	1 mg/ml (Please refer to the vial label for the specific concentration.)
Immunogen	The immunogen used to generate this antibody corresponds to chicken Sodium/Potassium ATPase alpha 1.
Purification	Affinity purified by Protein A.
Conjugation	Unconjugated

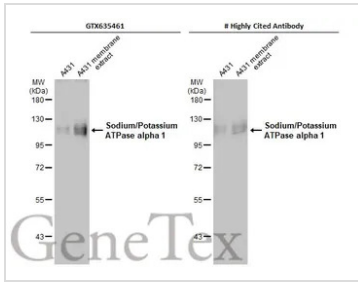
Note

For laboratory research use only. Not for any clinical, therapeutic, or diagnostic use in humans or animals. Not for animal or human consumption.

Purchasers shall not, and agree not to enable third parties to, analyze, copy, reverse engineer or otherwise attempt to determine the structure or sequence of the product.

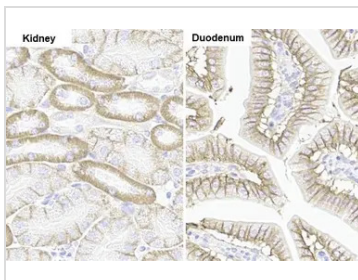


For full product information, images and publications, please visit our [website](#).

DATA IMAGES

GTX635461 WB Image

A431 whole cell and membrane extracts (30 µg) were separated by 7.5% SDS-PAGE, and the membranes were blotted with Sodium/Potassium ATPase alpha 1 antibody [HL114] (GTX635461) diluted at 1:500 and competitor's antibody diluted at 1:500. The HRP-conjugated anti-rabbit IgG antibody (GTX213110-01) was used to detect the primary antibody.

*The competitor is not affiliated with GeneTex and does not endorse this product.

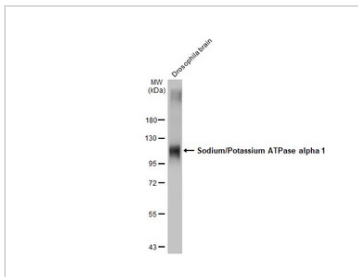

GTX635461 IHC-P Image

Sodium/Potassium ATPase alpha 1 antibody [HL114] detects Sodium/Potassium ATPase alpha 1 protein by immunohistochemical analysis.

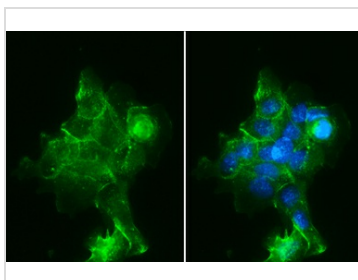
Sample: Paraffin-embedded mouse tissues.

Sodium/Potassium ATPase alpha 1 stained by Sodium/Potassium ATPase alpha 1 antibody [HL114] (GTX635461) diluted at 1:100.

Antigen Retrieval: Citrate buffer, pH 6.0, 15 min


GTX635461 WB Image

Drosophila tissue extract (5 µg) was separated by 7.5% SDS-PAGE, and the membrane was blotted with Sodium/Potassium ATPase alpha 1 antibody [HL114] (GTX635461) diluted at 1:30000. The HRP-conjugated anti-rabbit IgG antibody (GTX213110-01) was used to detect the primary antibody.

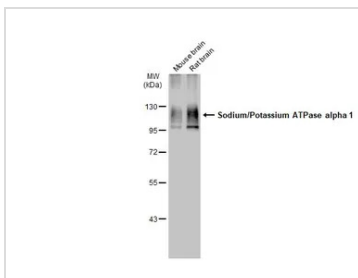

GTX635461 ICC/IF Image

Sodium/Potassium ATPase alpha 1 antibody [HL114] detects Sodium/Potassium ATPase alpha 1 protein at cell membrane by immunofluorescent analysis.

Sample: A431 cells were fixed in ice-cold MeOH for 5 min.

Green: Sodium/Potassium ATPase alpha 1 stained by Sodium/Potassium ATPase alpha 1 antibody [HL114] (GTX635461) diluted at 1:500.

Blue: Fluoroshield with DAPI (GTX30920).


GTX635461 WB Image

Various tissue extracts (50 µg) were separated by 7.5% SDS-PAGE, and the membrane was blotted with Sodium/Potassium ATPase alpha 1 antibody [HL114] (GTX635461) diluted at 1:50000. The HRP-conjugated anti-rabbit IgG antibody (GTX213110-01) was used to detect the primary antibody.



For full product information, images and publications, please visit our [website](https://www.genetex.com).