

ATRX antibody [HL1210]

Cat. No. GTX635478

Host	Rabbit
Clonality	Monoclonal
Isotype	IgG
Application	WB, ICC/IF
Reactivity	Human

Package
100 µl, 25 µl

APPLICATION

Application Note

*Optimal dilutions/concentrations should be determined by the researcher.

Suggested dilution	Recommended dilution
WB	1:500-1:3000
ICC/IF	Assay dependent

Not tested in other applications.

Calculated MW 283 kDa. ([Note](#))

PROPERTIES

Form	Liquid
Buffer	PBS
Preservative	No preservative
Storage	Store as concentrated solution. Centrifuge briefly prior to opening vial. For short-term storage (1-2 weeks), store at 4°C. For long-term storage, aliquot and store at -20°C or below. Avoid multiple freeze-thaw cycles.
Concentration	1.88 mg/ml (Please refer to the vial label for the specific concentration.)
Immunogen	Recombinant protein encompassing a sequence within the C-terminus region of human ATRX. The exact sequence is proprietary.
Purification	Affinity purified by Protein A.
Conjugation	Unconjugated

Note

For laboratory research use only. Not for any clinical, therapeutic, or diagnostic use in humans or animals. Not for animal or human consumption.

Purchasers shall not, and agree not to enable third parties to, analyze, copy, reverse engineer or otherwise attempt to determine the structure or sequence of the product.

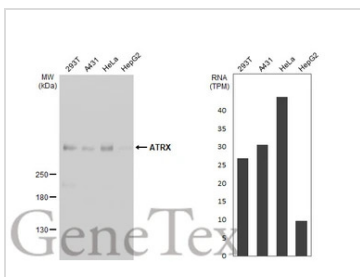


For full product information, images and publications, please visit our [website](#).

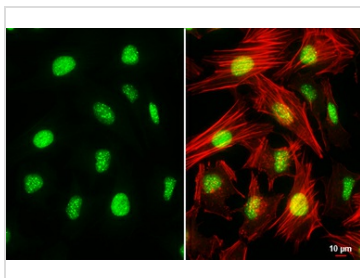
DATA IMAGES


GTGX635478 WB Image

Non-transfected (–) and transfected (+) 293T whole cell extracts (30 µg) were separated by 5% SDS-PAGE, and the membrane was blotted with ATRX antibody [HL1210] (GTGX635478) diluted at 1:500. The HRP-conjugated anti-rabbit IgG antibody (GTGX213110-01) was used to detect the primary antibody, and the signal was developed with Trident ECL plus-Enhanced.


GTGX635478 WB Image

Various whole cell extracts (30 µg) were separated by 5% SDS-PAGE, and the membrane was blotted with ATRX antibody [HL1210] (GTGX635478) diluted at 1:1000. The HRP-conjugated anti-rabbit IgG antibody (GTGX213110-01) was used to detect the primary antibody. Corresponding RNA expression data for the same cell lines are based on Human Protein Atlas program.


GTGX635478 ICC/IF Image

ATRX antibody [HL1210] detects ATRX protein at nucleus by immunofluorescent analysis.

Sample: HeLa cells were fixed in 4% paraformaldehyde at RT for 15 min.

Green: ATRX stained by ATRX antibody [HL1210] (GTGX635478) diluted at 1:100.

Red: phalloidin, a cytoskeleton marker, diluted at 1:200.

Scale bar= 10 µm.



For full product information, images and publications, please visit our [website](https://www.genetex.com).