

ATR (phospho Thr1989) antibody [HL132]

Cat. No. GTX635571

Host	Rabbit
Clonality	Monoclonal
Isotype	IgG
Applications	WB, ICC/IF, IHC-P
Reactivity	Human, Mouse, Rat

References (1)

Package

100 µl, 25 µl

Applications

Application Note

*Optimal dilutions/concentrations should be determined by the researcher.

Suggested dilution	Recommended dilution
WB	1:500-1:3000
ICC/IF	Assay dependent
IHC-P	Assay dependent

Not tested in other applications.

Observed MW (kDa) 260 kDa.

Properties

Form	Liquid
Buffer	PBS
Preservative	No preservative
Storage	Store as concentrated solution. Centrifuge briefly prior to opening vial. For short-term storage (1-2 weeks), store at 4°C. For long-term storage, aliquot and store at -20°C or below. Avoid multiple freeze-thaw cycles.
Concentration	2 mg/ml (Please refer to the vial label for the specific concentration.)
Immunogen	Carrier-protein conjugated synthetic peptide surrounding phospho Thr1989 of human ATR. The exact sequence is proprietary.
Purification	Affinity purified by Protein A.
Conjugation	Unconjugated

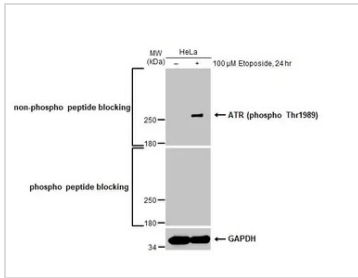
Note

For laboratory research use only. Not for any clinical, therapeutic, or diagnostic use in humans or animals. Not for animal or human consumption.

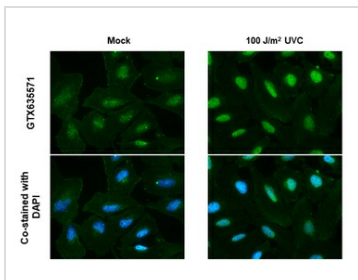
Purchasers shall not, and agree not to enable third parties to, analyze, copy, reverse engineer or otherwise attempt to determine the structure or sequence of the product.



For full product information, images and publications, please visit our [website](#).

DATA IMAGES

GTx635571 WB Image

Untreated (–) and treated (+) HeLa whole cell extracts (30 μg) were separated by 5% SDS-PAGE, and the membrane was blotted with ATR (phospho Thr1989) antibody [HL132] (GTx635571) diluted at 1:500. The HRP-conjugated anti-rabbit IgG antibody (GTx213110-01) was used to detect the primary antibody, and the signal was developed with Trident ECL plus-Enhanced.

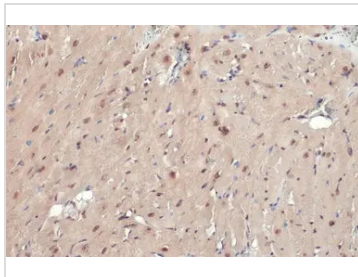

GTx635571 ICC/IF Image

ATR (phospho Thr1989) antibody [HL132] detects ATR (phospho Thr1989) protein by immunofluorescent analysis.

Sample: Mock and treated HeLa cells were fixed in 4% paraformaldehyde at RT for 15 min.

Green: ATR (phospho Thr1989) stained by ATR (phospho Thr1989) antibody [HL132] (GTx635571) diluted at 1:500.

Blue: Fluoroshield with DAPI (GTx30920).

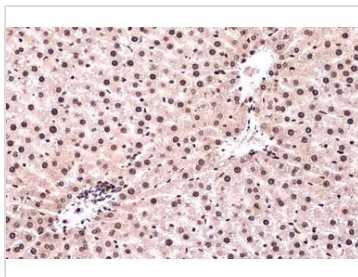

GTx635571 IHC-P Image

ATR (phospho Thr1989) antibody [HL132] detects ATR (phospho Thr1989) protein at nucleus by immunohistochemical analysis.

Sample: Paraffin-embedded mouse heart.

ATR (phospho Thr1989) stained by ATR (phospho Thr1989) antibody [HL132] (GTx635571) diluted at 1:100.

Antigen Retrieval: Citrate buffer, pH 6.0, 15 min

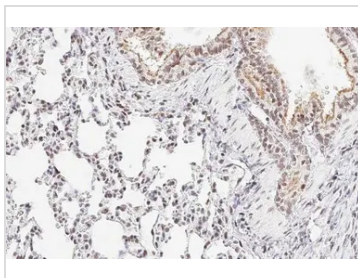

GTx635571 IHC-P Image

ATR (phospho Thr1989) antibody [HL132] detects ATR (phospho Thr1989) protein at nucleus by immunohistochemical analysis.

Sample: Paraffin-embedded mouse liver.

ATR (phospho Thr1989) stained by ATR (phospho Thr1989) antibody [HL132] (GTx635571) diluted at 1:50.

Antigen Retrieval: Citrate buffer, pH 6.0, 15 min


GTx635571 IHC-P Image

ATR (phospho Thr1989) antibody [HL132] detects ATR (phospho Thr1989) protein at nucleus by immunohistochemical analysis.

Sample: Paraffin-embedded rat lung.

ATR (phospho Thr1989) stained by ATR (phospho Thr1989) antibody [HL132] (GTx635571) diluted at 1:200.

Antigen Retrieval: Citrate buffer, pH 6.0, 15 min



For full product information, images and publications, please visit our [website](https://www.genetex.com).