

p70 S6K (phospho Thr421/Ser424) antibody [HL129]

Cat. No. GTX635621

Host	Rabbit
Clonality	Monoclonal
Isotype	IgG
Applications	WB, IHC-P
Reactivity	Human, Mouse, Rat

References (1)

★★★★☆ Review (1)

Package

100 µl, 25 µl

Applications

Application Note

*Optimal dilutions/concentrations should be determined by the researcher.

Suggested dilution	Recommended dilution
WB	1:500-1:3000
IHC-P	Assay dependent

Not tested in other applications.

Observed MW (kDa) 60 (p70 S6K), 72 (p85 S6K) kDa.

Product Note This antibody detects p70 S6K when dually phosphorylated at Thr421 and Ser424.

Properties

Form	Liquid
Buffer	PBS
Preservative	No preservatives
Storage	Store as concentrated solution. Centrifuge briefly prior to opening vial. For short-term storage (1-2 weeks), store at 4°C. For long-term storage, aliquot and store at -20°C or below. Avoid multiple freeze-thaw cycles.
Concentration	1 mg/ml (Please refer to the vial label for the specific concentration.)
Immunogen	Carrier-protein conjugated synthetic peptide surrounding phospho Thr421/Ser424 of human p70 S6K. The exact sequence is proprietary.
Purification	Affinity purified by Protein A.
Conjugation	Unconjugated

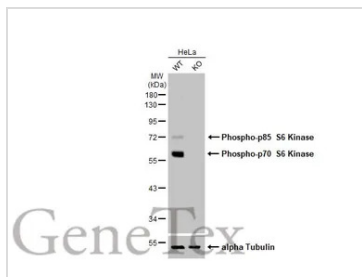
Note

For laboratory research use only. Not for any clinical, therapeutic, or diagnostic use in humans or animals. Not for animal or human consumption.

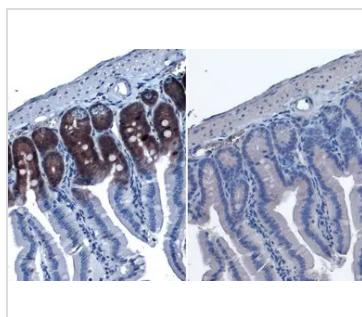
Purchasers shall not, and agree not to enable third parties to, analyze, copy, reverse engineer or otherwise attempt to determine the structure or sequence of the product.



For full product information, images and publications, please visit our [website](#).

DATA IMAGES

GTX635621 WB Image

Wild-type (WT) and p70 S6K (phospho Thr421/Ser424) knockout (KO) HeLa cell extracts (30 µg) were separated by 10% SDS-PAGE, and the membrane was blotted with p70 S6K (phospho Thr421/Ser424) antibody [HL129] (GTX635621) diluted at 1:500. The HRP-conjugated anti-rabbit IgG antibody (GTX213110-01) was used to detect the primary antibody, and the signal was developed with Trident ECL plus-Enhanced.

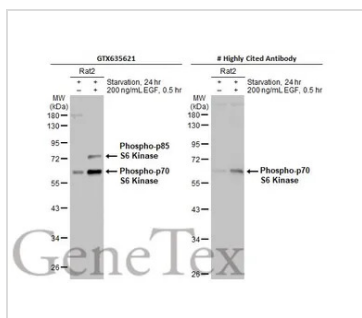

GTX635621 IHC-P Image

p70 S6K (phospho Thr421/Ser424) antibody [HL5] detects p70 S6K (phospho Thr421/Ser424) protein at cytoplasm by immunohistochemical analysis in the presence of control peptide (left) or antigen-specific peptide (right).

Sample: Paraffin-embedded mouse intestine.

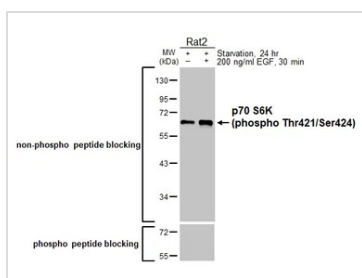
p70 S6K (phospho Thr421/Ser424) stained by p70 S6K (phospho Thr421/Ser424) antibody [HL5] (GTX635621) diluted at 1:100.

Antigen Retrieval: Citrate buffer, pH 6.0, 15 min


GTX635621 WB Image

Untreated (-) and treated (+) Rat2 whole cell extracts (30 µg) were separated by 10% SDS-PAGE, and the membranes were blotted with p70 S6K (phospho Thr421/Ser424) antibody [HL129] (GTX635621) diluted at 1:500 and competitor's antibody (# Highly Cited Antibody) diluted at 1:500. The HRP-conjugated anti-rabbit IgG antibody (GTX213110-01) was used to detect the primary antibody, and the signal was developed with Trident ECL plus-Enhanced.

*The competitor is not affiliated with GeneTex and does not endorse this product.


GTX635621 WB Image

Untreated (-) and treated (+) Rat2 whole cell extracts (30 µg) were separated by 10% SDS-PAGE, and the membrane was blotted with p70 S6K (phospho Thr421/Ser424) antibody [HL129] (GTX635621) diluted at 1:500. The HRP-conjugated anti-rabbit IgG antibody (GTX213110-01) was used to detect the primary antibody.



For full product information, images and publications, please visit our [website](https://www.genetex.com).