

## SARS-CoV-2 (COVID-19) Spike S1 antibody [HL6]

**Cat. No. GTX635654**

<b>Host</b>	Rabbit
<b>Clonality</b>	Monoclonal
<b>Isotype</b>	IgG
<b>Applications</b>	WB, ICC/IF, IHC-P, FCM, IP, ELISA, Sandwich ELISA, IHC-P (cell pellet)
<b>Reactivity</b>	SARS Coronavirus 2

References ( 39 )

Package

100 µl, 25 µl

## Applications

**Application Note**

\*Optimal dilutions/concentrations should be determined by the researcher.

Suggested dilution	Recommended dilution
WB	1:1000-1:10000
ICC/IF	1:100-1:1000
IHC-P	1:100-1:500
FCM	Assay dependent
IP	Assay dependent
ELISA	Assay dependent
Sandwich ELISA	Assay dependent
IHC-P (cell pellet)	Assay dependent

**Note : Recommended heat-Induced Epitope Retrieval pH 6.0 for 20 minutes , background Eraser (BGE) blocking step, and DAB Enhancer.****Capture : GTX635807, Detection : GTX636042 or Capture : GTX636042, Detection : GTX635807 / GTX635693 / GTX635713 / GTX635654.****Please notice that the capture antibody needs to be conjugated to HRP to function as the detection antibody when paired with the detected antibody. Please contact us for custom HRP-conjugated antibody.**

Not tested in other applications.

**Product Note**

This antibody detects SARS-CoV-2 Spike protein, but does not cross-react with SARS-CoV or MERS-CoV spike proteins based on our internal testing.

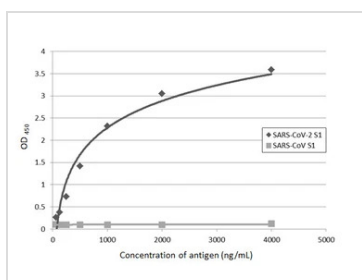
## Properties

<b>Form</b>	Liquid
<b>Buffer</b>	PBS
<b>Preservative</b>	No preservatives
<b>Storage</b>	Store as concentrated solution. Centrifuge briefly prior to opening vial. For short-term storage (1-2 weeks), store at 4°C. For long-term storage, aliquot and store at -20°C or below. Avoid multiple freeze-thaw cycles.

For full product information, images and publications, please visit our [website](#).

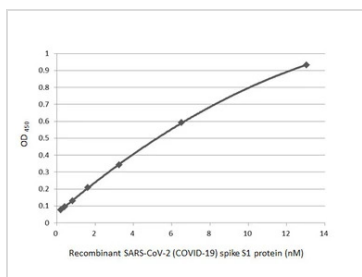
<b>Concentration</b>	1 mg/ml (Please refer to the vial label for the specific concentration.)
<b>Immunogen</b>	Recombinant protein encompassing a sequence within the N-terminus region of SARS-CoV-2 (COVID-19) spike (S1) (SARS-CoV-2 (strain Wuhan-Hu-1)). The exact sequence is proprietary.
<b>Purification</b>	Affinity purified by protein A.
<b>Conjugation</b>	Unconjugated
<b>Note</b>	For laboratory research use only. Not for any clinical, therapeutic, or diagnostic use in humans or animals. Not for animal or human consumption.  Purchasers shall not, and agree not to enable third parties to, analyze, copy, reverse engineer or otherwise attempt to determine the structure or sequence of the product.

## DATA IMAGES



### GTX635654 ELISA Image

Indirect ELISA analysis performed by coating plate with recombinant SARS-CoV-2 (COVID-19) spike S1 subunit protein or recombinant SARS-CoV spike S1 subunit protein (62.5–4000 ng/mL). Coated protein probed with SARS-CoV-2 (COVID-19) Spike S1 antibody [HL6] (GTX635654) (1 µg/mL). Rabbit IgG antibody (HRP) (GTX213110-01) (1:10000) detected bound primary antibody.

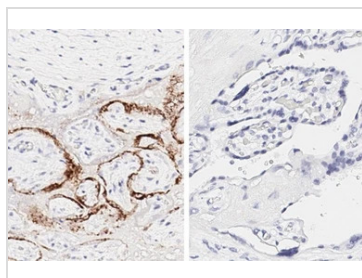


### GTX635654 ELISA Image

Sandwich ELISA detection of recombinant SARS-CoV-2 (COVID-19) Spike S1 protein, His tag (active) (GTX135817-pro) using antibodies as below.

**Capture:** SARS-CoV-2 (COVID-19) Spike RBD antibody [GT5449] (GTX636042) (5 µg/mL)

**Detection:** SARS-CoV-2 (COVID-19) Spike S1 antibody [HL6] (GTX635654) (1 µg/mL)



### GTX635654 IHC-P Image

SARS-CoV-2 (COVID-19) Spike S1 antibody [HL6] (GTX635654) detects SARS-CoV-2 (COVID-19) Spike S1 protein by immunohistochemical analysis of SARS-CoV-2 infected human placenta (left) and normal human placenta (right).

The IHC-P was performed by HISTOWIZ.



For full product information, images and publications, please visit our [website](https://www.genetex.com).