

## SARS-CoV-2 (COVID-19) Nucleocapsid antibody [HL249]

Cat. No. GTX635678

<b>Host</b>	Rabbit
<b>Clonality</b>	Monoclonal
<b>Isotype</b>	IgG
<b>Applications</b>	WB, ICC/IF, ELISA, Sandwich ELISA, IHC-P (cell pellet)
<b>Reactivity</b>	SARS Coronavirus, SARS Coronavirus 2

References ( 4 )

Package

100 µl, 25 µl

## Applications

## Application Note

\*Optimal dilutions/concentrations should be determined by the researcher.

Suggested dilution	Recommended dilution
WB	1:5000-1:20000
ICC/IF	1:100-1:1000
ELISA	Assay dependent
Sandwich ELISA	Assay dependent
IHC-P (cell pellet)	Assay dependent

**Note : Capture : GTX635685 / GTX635679 / GTX635680 / GTX635689, Detection : GTX635678.**

**Please notice that GTX635678 needs to be conjugated to HRP to function as the detection antibody when paired with GTX635685 / GTX635679 / GTX635680 / GTX635689. Please contact us for custom HRP-conjugated antibody.**

Not tested in other applications.

## Product Note

This antibody detects both SARS-CoV nucleocapsid and SARS-CoV-2 nucleocapsid proteins. Our internal testing indicates no cross-reactivity with MERS-CoV nucleocapsid protein.

## Properties

<b>Form</b>	Liquid
<b>Buffer</b>	PBS
<b>Preservative</b>	No preservatives
<b>Storage</b>	Store as concentrated solution. Centrifuge briefly prior to opening vial. For short-term storage (1-2 weeks), store at 4°C. For long-term storage, aliquot and store at -20°C or below. Avoid multiple freeze-thaw cycles.
<b>Concentration</b>	1 mg/ml (Please refer to the vial label for the specific concentration.)
<b>Immunogen</b>	Full length SARS-CoV-2 (COVID-19) nucleocapsid Recombinant protein. (SARS-CoV-2 (strain Wuhan-Hu-1))
<b>Purification</b>	Affinity purified by protein A.



For full product information, images and publications, please visit our [website](#).

**Conjugation**

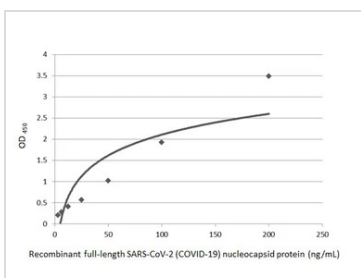
Unconjugated

For laboratory research use only. Not for any clinical, therapeutic, or diagnostic use in humans or animals. Not for animal or human consumption.

**Note**

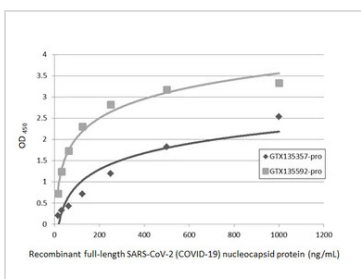
Purchasers shall not, and agree not to enable third parties to, analyze, copy, reverse engineer or otherwise attempt to determine the structure or sequence of the product.

DATA IMAGES



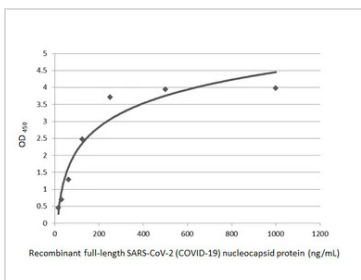
**GTX635678 ELISA Image**

Sandwich ELISA detection of recombinant full-length SARS-CoV-2 (COVID-19) nucleocapsid protein, His tag protein (GTX135592-pro) using SARS-CoV-2 (COVID-19) nucleocapsid antibody [HL5410] (GTX635685) as capture antibody at concentration of 5 µg/mL and HRP-conjugated SARS-CoV-2 (COVID-19) nucleocapsid antibody [HL249] (GTX635678) as detection antibody at concentration of 1 µg/mL.



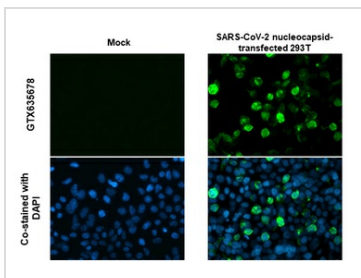
**GTX635678 ELISA Image**

Indirect ELISA analysis was performed by coating plate with 50 µL of recombinant full-length SARS-CoV-2 (COVID-19) nucleocapsid protein (GTX135357-pro) and (GTX135592-pro) at concentrations ranging from 0.015 µg/mL to 1 µg/mL. The coated protein is detected with SARS-CoV-2 (COVID-19) nucleocapsid antibody [HL249] (GTX635678) at 1 µg/mL. Rabbit IgG antibody (HRP) (GTX213110-01) was diluted at 1:10000 and used to detect the primary antibody.



**GTX635678 ELISA Image**

Sandwich ELISA detection of recombinant full-length SARS-CoV-2 (COVID-19) nucleocapsid protein, His tag protein (GTX135592-pro) using SARS-CoV-2 (COVID-19) nucleocapsid antibody [HL146] (GTX635680) as capture antibody at concentration of 5 µg/mL and HRP-conjugated SARS-CoV-2 (COVID-19) nucleocapsid antibody [HL249] (GTX635678) as detection antibody at concentration of 1 µg/mL. Please notice that GTX635678 needs to be conjugated to HRP to function as the detection antibody when paired with GTX635680. Please contact us for custom HRP-conjugated antibody.



**GTX635678 ICC/IF Image**

SARS-CoV-2 (COVID-19) nucleocapsid antibody [HL249] detects SARS-CoV-2 (COVID-19) nucleocapsid protein by immunofluorescent analysis.

Sample: Mock and transfected 293T cells were fixed in 4% paraformaldehyde at RT for 15 min.

Green: SARS-CoV-2 (COVID-19) nucleocapsid stained by SARS-CoV-2 (COVID-19) nucleocapsid antibody [HL249] (GTX635678) diluted at 1:1000.

Blue: Fluoroshield with DAPI (GTX30920).



For full product information, images and publications, please visit our [website](#).