

SARS-CoV-2 (COVID-19) Nucleocapsid antibody [HL146]

Cat. No. GTX635680

| | |
|--------------|--|
| Host | Rabbit |
| Clonality | Monoclonal |
| Isotype | IgG |
| Applications | WB, ICC/IF, FCM, ELISA, Sandwich ELISA |
| Reactivity | SARS Coronavirus, SARS Coronavirus 2 |

References (1)

Package

100 µl, 25 µl

Applications

Application Note

*Optimal dilutions/concentrations should be determined by the researcher.

| Suggested dilution | Recommended dilution |
|--------------------|----------------------|
| WB | 1:1000-1:10000 |
| ICC/IF | 1:100-1:1000 |
| FCM | Assay dependent |
| ELISA | Assay dependent |
| Sandwich ELISA | Assay dependent |

Note : Capture : GTX635680, Detection : GTX635678 / GTX635688.**Please notice that GTX635688 / GTX635678 needs to be conjugated to HRP to function as the detection antibody when paired with GTX635680. Please contact us for custom HRP-conjugated antibody.**

Not tested in other applications.

Product Note

This antibody detects both SARS-CoV nucleocapsid and SARS-CoV-2 nucleocapsid proteins. Our internal testing indicates no cross-reactivity with MERS-CoV nucleocapsid protein.

Properties

| | |
|---------------|--|
| Form | Liquid |
| Buffer | PBS |
| Preservative | No preservative |
| Storage | Store as concentrated solution. Centrifuge briefly prior to opening vial. For short-term storage (1-2 weeks), store at 4°C. For long-term storage, aliquot and store at -20°C or below. Avoid multiple freeze-thaw cycles. |
| Concentration | 1 mg/ml (Please refer to the vial label for the specific concentration.) |
| Immunogen | Full length SARS-CoV-2 (COVID-19) nucleocapsid Recombinant protein. (SARS-CoV-2 (strain Wuhan-Hu-1)) |
| Purification | Affinity purified by protein A. |

For full product information, images and publications, please visit our [website](#).

Date 2025 / 04 / 26 Page 1 of 2

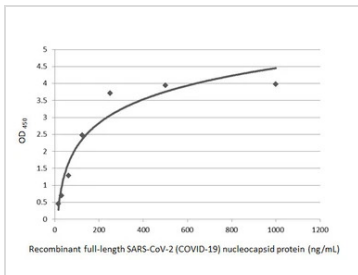
Conjugation

Unconjugated

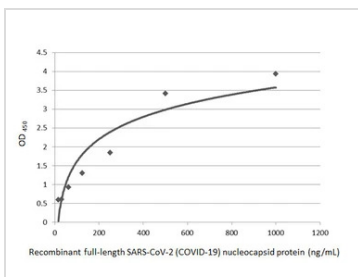
Note

For laboratory research use only. Not for any clinical, therapeutic, or diagnostic use in humans or animals. Not for animal or human consumption.

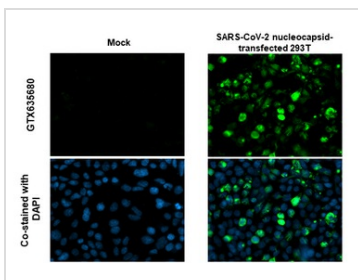
Purchasers shall not, and agree not to enable third parties to, analyze, copy, reverse engineer or otherwise attempt to determine the structure or sequence of the product.

DATA IMAGES

GTx635680 ELISA Image

Sandwich ELISA detection of recombinant full-length SARS-CoV-2 (COVID-19) nucleocapsid protein, His tag protein (GTx135592-pro) using SARS-CoV-2 (COVID-19) nucleocapsid antibody [HL146] (GTx635680) as capture antibody at concentration of 5 µg/mL and HRP-conjugated SARS-CoV-2 (COVID-19) nucleocapsid antibody [HL249] (GTx635678) as detection antibody at concentration of 1 µg/mL.


GTx635680 ELISA Image

Sandwich ELISA detection of recombinant full-length SARS-CoV-2 (COVID-19) nucleocapsid protein, His tag protein (GTx135592-pro) using SARS-CoV-2 (COVID-19) nucleocapsid antibody [HL146] (GTx635680) as capture antibody at concentration of 5 µg/mL and HRP-conjugated SARS-CoV-2 (COVID-19) nucleocapsid antibody [HL455] (GTx635688) as detection antibody at concentration of 1 µg/mL.

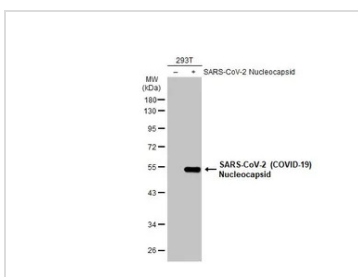

GTx635680 ICC/IF Image

SARS-CoV-2 (COVID-19) nucleocapsid antibody [HL146] detects SARS-CoV-2 (COVID-19) nucleocapsid protein by immunofluorescent analysis.

Sample: Mock and transfected 293T cells were fixed in 4% paraformaldehyde at RT for 15 min.

Green: SARS-CoV-2 (COVID-19) nucleocapsid stained by SARS-CoV-2 (COVID-19) nucleocapsid antibody [HL146] (GTx635680) diluted at 1:1000.

Blue: Fluoroshield with DAPI (GTx30920).


GTx635680 WB Image

Non-transfected (–) and transfected (+) 293T whole cell extracts (30 µg) were separated by 10% SDS-PAGE, and the membrane was blotted with SARS-CoV-2 (COVID-19) nucleocapsid antibody [HL146] (GTx635680) diluted at 1:5000. The HRP-conjugated anti-rabbit IgG antibody (GTx213110-01) was used to detect the primary antibody.



For full product information, images and publications, please visit our [website](https://www.genetex.com).