

ASFV p54 antibody [GT853]

Cat. No. GTX635690

Host	Mouse
Clonality	Monoclonal
Isotype	IgG1
Applications	WB, ICC/IF, IHC-P, ELISA, Lateral Flow, Sandwich ELISA
Reactivity	African swine fever virus

References (1)

★★★★★ Review (1)

Package

100 µl, 25 µl

PRODUCT

Summary

ASFV p54 antibody detects envelope protein p54 of African swine fever virus. Protein p54, encoded by the E183L gene, is a 20 kDa type I transmembrane protein that localizes to envelope precursors derived from the host ER. p54 is involved in intracellular microtubule-dependent transport of viral capsid toward viral factories, and is detected on membrane-like structures within viral factories and mature extracellular virions. This is a valuable mouse monoclonal antibody for research into this very contagious hemorrhagic disease of pigs.

Applications

Application Note

*Optimal dilutions/concentrations should be determined by the researcher.

Suggested dilution	Recommended dilution
WB	1:1000-1:10000
ICC/IF	Assay dependent
IHC-P	Assay dependent
ELISA	Assay dependent
Lateral Flow	Assay dependent
Sandwich ELISA	Assay dependent

Note : Capture : GTX635690, Detection : GTX636562 / GTX636703

Capture : GTX635690, Detection : GTX135175 / GTX635691

Please notice that GTX635691 needs to be conjugated to HRP to function as the detection antibody when paired with GTX635690. Please contact us for custom HRP-conjugated antibody.

Not tested in other applications.

Calculated MW 20 kDa. ([Note](#))

Properties

Form	Liquid
Buffer	PBS, 20% Glycerol
Preservative	No preservatives

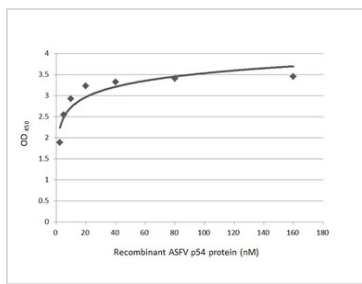


For full product information, images and publications, please visit our [website](#).

Date 2026 / 02 / 02 Page 1 of 2

Storage	Store as concentrated solution. Centrifuge briefly prior to opening vial. For short-term storage (1-2 weeks), store at 4°C. For long-term storage, aliquot and store at -20°C or below. Avoid multiple freeze-thaw cycles.
Concentration	1 mg/ml (Please refer to the vial label for the specific concentration.)
Immunogen	Recombinant protein encompassing a sequence within the center region of ASFV p54 (ASFV (strain: BA71V)). The exact sequence is proprietary.
Purification	Affinity purified by Protein G.
Conjugation	Unconjugated
Note	For laboratory research use only. Not for any clinical, therapeutic, or diagnostic use in humans or animals. Not for animal or human consumption. Purchasers shall not, and agree not to enable third parties to, analyze, copy, reverse engineer or otherwise attempt to determine the structure or sequence of the product.

DATA IMAGES

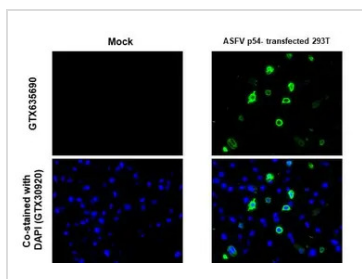


GTX635690 ELISA Image

Sandwich ELISA detection of recombinant ASFV p54 using antibodies as below.

Capture: ASFV p54 antibody [GT853] (GTX635690) (5 µg/mL)

Detection: ASFV p54 antibody (GTX135175) (1 µg/mL).



GTX635690 IHC-P Image

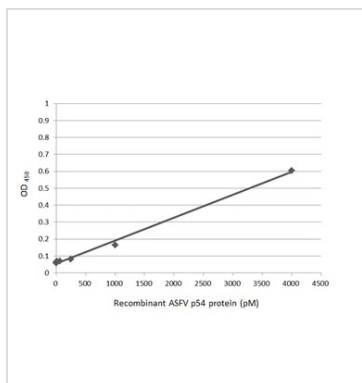
ASFV p54 antibody [GT853] detects ASFV p54 protein at cytoplasm by immunohistochemical analysis.

Sample: African swine fever virus envelope protein p54 transfected 293T cell FFPE Cell Pellet Block.

Green: ASFV p54 stained by ASFV p54 antibody [GT853] (GTX635690) diluted at 1:1000.

Blue: Fluoroshield with DAPI (GTX30920).

Antigen Retrieval: Citrate buffer, pH 6.0, 15 min



GTX635690 ELISA Image

Sandwich ELISA detection of recombinant ASFV p54 using antibodies as below.

Capture:

ASFV p54 antibody [GT853] (GTX635690) (5 µg/mL)

Detection:

HRP-conjugated ASFV p54 antibody [GT1075] (GTX635691) (1 µg/mL)

Please notice that GTX635691 needs to be conjugated to HRP to function as the detection antibody when paired with GTX635690. Please contact us for custom HRP-conjugated antibody.



For full product information, images and publications, please visit our [website](https://www.genetex.com).