

ASFV p54 antibody [GT1075]

Cat. No. GTX635691

Host	Mouse
Clonality	Monoclonal
Isotype	IgG1
Applications	WB, ICC/IF, IHC-P, ELISA, Lateral Flow, Sandwich ELISA
Reactivity	African swine fever virus

★★★★★ Review (2)

Package
100 µl, 25 µl

Applications

Application Note

*Optimal dilutions/concentrations should be determined by the researcher.

Suggested dilution	Recommended dilution
WB	1:1000-1:10000
ICC/IF	Assay dependent
IHC-P	Assay dependent
ELISA	Assay dependent
Lateral Flow	Assay dependent
Sandwich ELISA	Assay dependent

Note : Capture : GTX636701, Detection : GTX635691 or Capture : GTX635691, Detection : GTX636562 / GTX636703

Capture : GTX635690, Detection : GTX635691 or Capture : GTX635691, Detection : GTX135175.

Please notice that GTX635691 needs to be conjugated to HRP to function as the detection antibody when paired with GTX635690. Please contact us for custom HRP-conjugated antibody.

Not tested in other applications.

Calculated MW 20 kDa. ([Note](#))

Properties

Form	Liquid
Buffer	PBS, 20% Glycerol
Preservative	No preservatives
Storage	Store as concentrated solution. Centrifuge briefly prior to opening vial. For short-term storage (1-2 weeks), store at 4°C. For long-term storage, aliquot and store at -20°C or below. Avoid multiple freeze-thaw cycles.
Concentration	1 mg/ml (Please refer to the vial label for the specific concentration.)
Immunogen	Recombinant protein encompassing a sequence within the center region of ASFV p54 (ASFV (strain: BA71V)). The exact sequence is proprietary.



For full product information, images and publications, please visit our [website](#).

Purification

Affinity purified by Protein G.

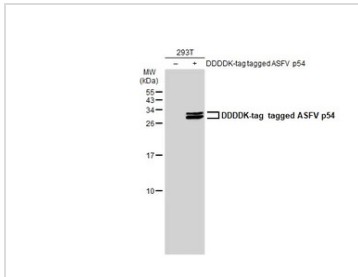
Conjugation

Unconjugated

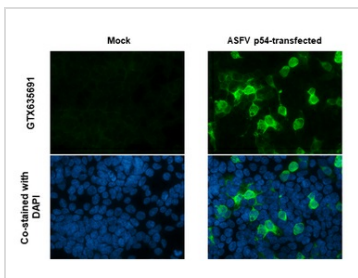
Note

For laboratory research use only. Not for any clinical, therapeutic, or diagnostic use in humans or animals. Not for animal or human consumption.

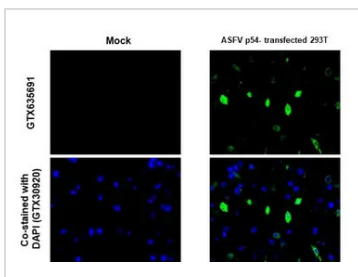
Purchasers shall not, and agree not to enable third parties to, analyze, copy, reverse engineer or otherwise attempt to determine the structure or sequence of the product.

DATA IMAGES

GTX635691 WB Image

Non-transfected (–) and transfected (+) 293T whole cell extracts (30 µg) were separated by 15% SDS-PAGE, and the membrane was blotted with ASFV p54 antibody [GT1075] (GTX635691) diluted at 1:5000. The HRP-conjugated anti-mouse IgG antibody (GTX213111-01) was used to detect the primary antibody.


GTX635691 ICC/IF Image

ASFV p54 antibody [GT1075] detects ASFV p54 protein by immunofluorescent analysis. Sample: Mock and transfected 293T cells were fixed in 4% paraformaldehyde at RT for 15 min. Green: ASFV p54 stained by ASFV p54 antibody [GT1075] (GTX635691) diluted at 1:1000. Blue: Fluoroshield with DAPI (GTX30920).


GTX635691 IHC-P Image

ASFV p54 antibody [GT1075] detects ASFV p54 protein at cytoplasm by immunohistochemical analysis. Sample: African swine fever virus envelope protein p54 transfected 293T cell FFPE Cell Pellet Block. Green: ASFV p54 stained by ASFV p54 antibody [GT1075] (GTX635691) diluted at 1:1000. Blue: Fluoroshield with DAPI (GTX30920). Antigen Retrieval: Citrate buffer, pH 6.0, 15 min


GTX635691 Lateral Flow Image

Detection of ASFV p54 (ECD) protein, His Tag (GTX135175-pro, 0.2 µg/ml) by lateral flow assay.

Capture : Biotin-labeled ASFV p54 antibody [GT1075] (3.32 µg/ml). **Detection :** FITC-labeled ASFV p54 antibody [GT853] (3.32 µg/ml).

For full product information, images and publications, please visit our [website](https://www.genetex.com).