

LYN (phospho Tyr397) antibody [HL122]

Cat. No. GTX635694

Host	Rabbit
Clonality	Monoclonal
Isotype	IgG
Applications	WB, IHC-P
Reactivity	Human, Mouse

References (1)

Package

100 µl, 25 µl

Applications

Application Note

*Optimal dilutions/concentrations should be determined by the researcher.

Suggested dilution	Recommended dilution
WB	1:500-1:3000
IHC-P	Assay dependent

Not tested in other applications.

Observed MW (kDa) 55-60 kDa.

Product Note This antibody recognizes LYN protein phosphorylated at Tyr397, LCK protein phosphorylated at Tyr394, HCK protein phosphorylated at Tyr411, and BLK protein phosphorylated at Tyr389.

Properties

Form	Liquid
Buffer	PBS
Preservative	No preservatives
Storage	Store as concentrated solution. Centrifuge briefly prior to opening vial. For short-term storage (1-2 weeks), store at 4°C. For long-term storage, aliquot and store at -20°C or below. Avoid multiple freeze-thaw cycles.
Concentration	1 mg/ml (Please refer to the vial label for the specific concentration.)
Immunogen	Carrier-protein conjugated synthetic peptide surrounding phospho Tyr397 of human LYN. The exact sequence is proprietary.
Purification	Affinity purified by Protein A.
Conjugation	Unconjugated

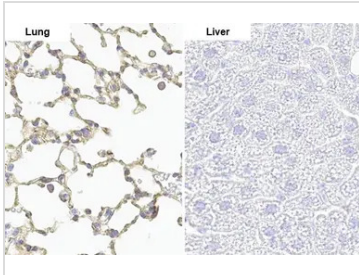


For full product information, images and publications, please visit our [website](#).

For laboratory research use only. Not for any clinical, therapeutic, or diagnostic use in humans or animals. Not for animal or human consumption.

Note

Purchasers shall not, and agree not to enable third parties to, analyze, copy, reverse engineer or otherwise attempt to determine the structure or sequence of the product.

DATA IMAGES

GTX635694 IHC-P Image

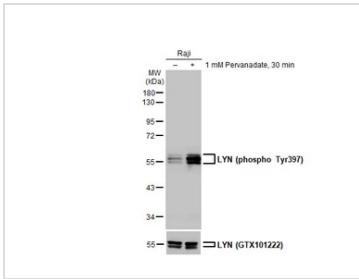
LYN (phospho Tyr397) antibody detects LYN (phospho Tyr397) protein by immunohistochemical analysis.

Sample: Paraffin-embedded mouse tissues.

LYN (phospho Tyr397) stained by LYN (phospho Tyr397) antibody (GTX635694) diluted at 1:100.

Antigen Retrieval: Citrate buffer, pH 6.0, 15 min

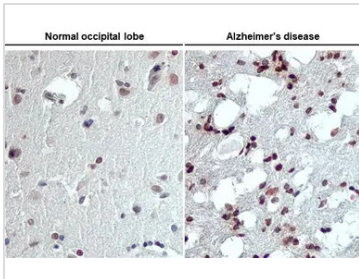
The expression pattern is based on the publication:[PMID: 25409824](https://pubmed.ncbi.nlm.nih.gov/25409824/)


GTX635694 WB Image

Untreated (-) and treated (+) Raji whole cell extracts (30 µg) were separated by 10% SDS-PAGE, and the

membrane was blotted with LYN (phospho Tyr397) antibody [HL122] (GTX635694) diluted at 1:1000. The

HRP-conjugated anti-rabbit IgG antibody (GTX213110-01) was used to detect the primary antibody.

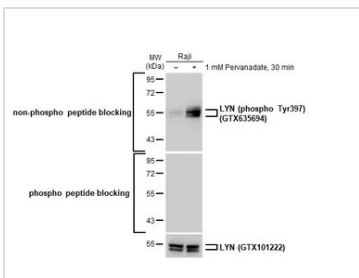

GTX635694 IHC-P Image

LYN (phospho Tyr397) antibody [HL122] detects LYN (phospho Tyr397) protein in the occipital lobe of human Alzheimer's disease brain by immunohistochemical analysis.

Sample: Paraffin-embedded Human Matched Pair Tissue Array - Brain (Alzheimer's Disease + Normal) (GTX49382).

LYN (phospho Tyr397) stained by LYN (phospho Tyr397) antibody [HL122] (GTX635694) diluted at 1:100.

Antigen Retrieval: Citrate buffer, pH 6.0, 15 min


GTX635694 WB Image

Untreated (-) and treated (+) Raji whole cell extracts (30 µg) were separated by 10% SDS-PAGE, and the

membrane was blotted with LYN (phospho Tyr397) antibody [HL122] (GTX635694) diluted at 1:1000. The

HRP-conjugated anti-rabbit IgG antibody (GTX213110-01) was used to detect the primary antibody, and

the signal was developed with Trident ECL plus-Enhanced.



For full product information, images and publications, please visit our [website](https://www.genetex.com).