

LYN (phospho Tyr397) antibody [HL122]

Cat. No. GTX635694

| | |
|---------------------|--------------|
| Host | Rabbit |
| Clonality | Monoclonal |
| Isotype | IgG |
| Applications | WB, IHC-P |
| Reactivity | Human, Mouse |

References (2)

Package

100 µl, 25 µl

Applications

Application Note

*Optimal dilutions/concentrations should be determined by the researcher.

| Suggested dilution | Recommended dilution |
|--------------------|----------------------|
| WB | 1:500-1:3000 |
| IHC-P | Assay dependent |

Not tested in other applications.

Observed MW (kDa) 55-60 kDa.**Product Note**

This antibody recognizes LYN protein phosphorylated at Tyr397, LCK protein phosphorylated at Tyr394, HCK protein phosphorylated at Tyr411, and BLK protein phosphorylated at Tyr389.

Properties

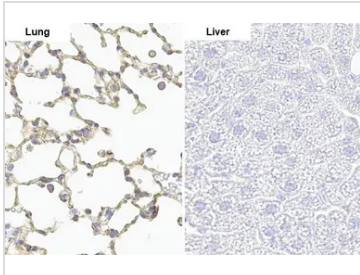
| | |
|----------------------|--|
| Form | Liquid |
| Buffer | PBS |
| Preservative | No preservatives |
| Storage | Store as concentrated solution. Centrifuge briefly prior to opening vial. For short-term storage (1-2 weeks), store at 4°C. For long-term storage, aliquot and store at -20°C or below. Avoid multiple freeze-thaw cycles. |
| Concentration | 1 mg/ml (Please refer to the vial label for the specific concentration.) |
| Immunogen | Carrier-protein conjugated synthetic peptide surrounding phospho Tyr397 of human LYN. The exact sequence is proprietary. |
| Purification | Affinity purified by Protein A. |
| Conjugation | Unconjugated |

For full product information, images and publications, please visit our [website](#).

For laboratory research use only. Not for any clinical, therapeutic, or diagnostic use in humans or animals. Not for animal or human consumption.

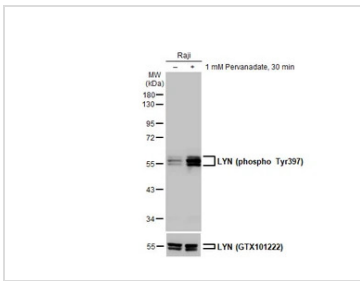
Note
Purchasers shall not, and agree not to enable third parties to, analyze, copy, reverse engineer or otherwise attempt to determine the structure or sequence of the product.

DATA IMAGES



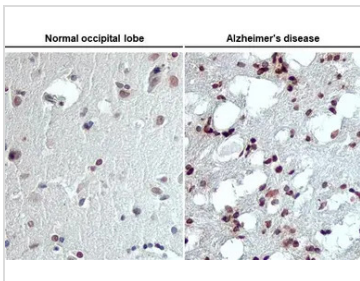
GTX635694 IHC-P Image

LYN (phospho Tyr397) antibody detects LYN (phospho Tyr397) protein by immunohistochemical analysis.
Sample: Paraffin-embedded mouse tissues.
LYN (phospho Tyr397) stained by LYN (phospho Tyr397) antibody (GTX635694) diluted at 1:100.
Antigen Retrieval: Citrate buffer, pH 6.0, 15 min
The expression pattern is based on the publication:[PMID: 25409824](https://pubmed.ncbi.nlm.nih.gov/25409824/)



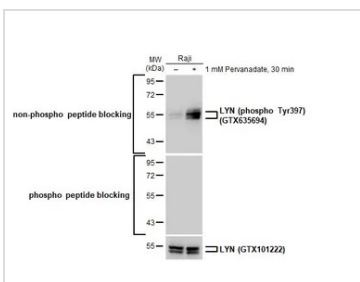
GTX635694 WB Image

Untreated (-) and treated (+) Raji whole cell extracts (30 µg) were separated by 10% SDS-PAGE, and the membrane was blotted with LYN (phospho Tyr397) antibody [HL122] (GTX635694) diluted at 1:1000. The HRP-conjugated anti-rabbit IgG antibody (GTX213110-01) was used to detect the primary antibody.



GTX635694 IHC-P Image

LYN (phospho Tyr397) antibody [HL122] detects LYN (phospho Tyr397) protein in the occipital lobe of human Alzheimer's disease brain by immunohistochemical analysis.
Sample: Paraffin-embedded Human Matched Pair Tissue Array - Brain (Alzheimer's Disease + Normal) (GTX49382).
LYN (phospho Tyr397) stained by LYN (phospho Tyr397) antibody [HL122] (GTX635694) diluted at 1:100.
Antigen Retrieval: Citrate buffer, pH 6.0, 15 min



GTX635694 WB Image

Untreated (-) and treated (+) Raji whole cell extracts (30 µg) were separated by 10% SDS-PAGE, and the membrane was blotted with LYN (phospho Tyr397) antibody [HL122] (GTX635694) diluted at 1:1000. The HRP-conjugated anti-rabbit IgG antibody (GTX213110-01) was used to detect the primary antibody, and the signal was developed with Trident ECL plus-Enhanced.



For full product information, images and publications, please visit our [website](http://www.genetex.com).