

## LYN (phospho Tyr397) antibody [HL122]

**Cat. No. GTX635694**

<b>Host</b>	Rabbit
<b>Clonality</b>	Monoclonal
<b>Isotype</b>	IgG
<b>Applications</b>	WB, IHC-P
<b>Reactivity</b>	Human, Mouse

References ( 2 )

Package

100 µl, 25 µl

## Applications

**Application Note**

\*Optimal dilutions/concentrations should be determined by the researcher.

Suggested dilution	Recommended dilution
WB	1:500-1:3000
IHC-P	Assay dependent

Not tested in other applications.

**Observed MW (kDa)** 55-60 kDa.**Product Note**

This antibody recognizes LYN protein phosphorylated at Tyr397, LCK protein phosphorylated at Tyr394, HCK protein phosphorylated at Tyr411, and BLK protein phosphorylated at Tyr389.

## Properties

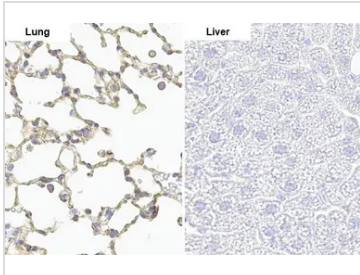
<b>Form</b>	Liquid
<b>Buffer</b>	PBS
<b>Preservative</b>	No preservatives
<b>Storage</b>	Store as concentrated solution. Centrifuge briefly prior to opening vial. For short-term storage (1-2 weeks), store at 4°C. For long-term storage, aliquot and store at -20°C or below. Avoid multiple freeze-thaw cycles.
<b>Concentration</b>	1 mg/ml (Please refer to the vial label for the specific concentration.)
<b>Immunogen</b>	Carrier-protein conjugated synthetic peptide surrounding phospho Tyr397 of human LYN. The exact sequence is proprietary.
<b>Purification</b>	Affinity purified by Protein A.
<b>Conjugation</b>	Unconjugated

For full product information, images and publications, please visit our [website](#).

For laboratory research use only. Not for any clinical, therapeutic, or diagnostic use in humans or animals. Not for animal or human consumption.

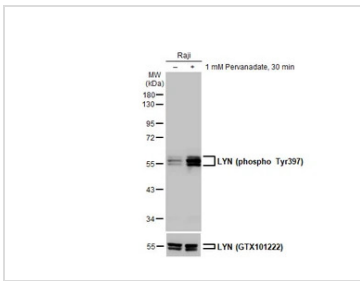
**Note**  
 Purchasers shall not, and agree not to enable third parties to, analyze, copy, reverse engineer or otherwise attempt to determine the structure or sequence of the product.

DATA IMAGES



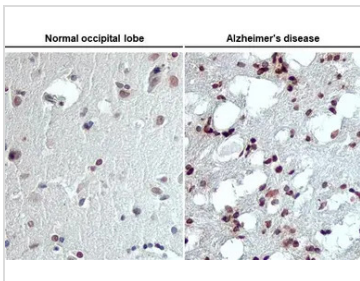
**GTX635694 IHC-P Image**

LYN (phospho Tyr397) antibody detects LYN (phospho Tyr397) protein by immunohistochemical analysis.  
 Sample: Paraffin-embedded mouse tissues.  
 LYN (phospho Tyr397) stained by LYN (phospho Tyr397) antibody (GTX635694) diluted at 1:100.  
 Antigen Retrieval: Citrate buffer, pH 6.0, 15 min  
 The expression pattern is based on the publication:[PMID: 25409824](https://pubmed.ncbi.nlm.nih.gov/25409824/)



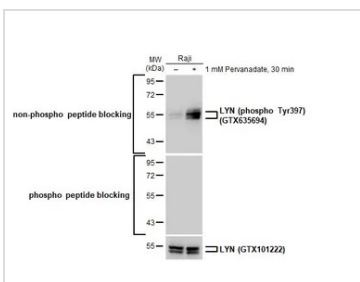
**GTX635694 WB Image**

Untreated (-) and treated (+) Raji whole cell extracts (30 µg) were separated by 10% SDS-PAGE, and the membrane was blotted with LYN (phospho Tyr397) antibody [HL122] (GTX635694) diluted at 1:1000. The HRP-conjugated anti-rabbit IgG antibody (GTX213110-01) was used to detect the primary antibody.



**GTX635694 IHC-P Image**

LYN (phospho Tyr397) antibody [HL122] detects LYN (phospho Tyr397) protein in the occipital lobe of human Alzheimer's disease brain by immunohistochemical analysis.  
 Sample: Paraffin-embedded Human Matched Pair Tissue Array - Brain (Alzheimer's Disease + Normal) (GTX49382).  
 LYN (phospho Tyr397) stained by LYN (phospho Tyr397) antibody [HL122] (GTX635694) diluted at 1:100.  
 Antigen Retrieval: Citrate buffer, pH 6.0, 15 min



**GTX635694 WB Image**

Untreated (-) and treated (+) Raji whole cell extracts (30 µg) were separated by 10% SDS-PAGE, and the membrane was blotted with LYN (phospho Tyr397) antibody [HL122] (GTX635694) diluted at 1:1000. The HRP-conjugated anti-rabbit IgG antibody (GTX213110-01) was used to detect the primary antibody, and the signal was developed with Trident ECL plus-Enhanced.



For full product information, images and publications, please visit our [website](http://www.genetex.com).