

EGFR (E746-A750del) antibody [HL363]

Cat. No. GTX635716

Host	Rabbit
Clonality	Monoclonal
Isotype	IgG
Applications	WB
Reactivity	Human

Package
100 µl, 25 µl

Applications

Application Note

*Optimal dilutions/concentrations should be determined by the researcher.

Suggested dilution	Recommended dilution
WB	1:500-1:3000

Not tested in other applications.

Observed MW (kDa) 160-175 kDa.

Product Note This antibody is specific for EGFR E746-A750del mutant protein. It does not recognize EGFR wide type protein.

Properties

Form	Liquid
Buffer	PBS
Preservative	No preservatives
Storage	Store as concentrated solution. Centrifuge briefly prior to opening vial. For short-term storage (1-2 weeks), store at 4°C. For long-term storage, aliquot and store at -20°C or below. Avoid multiple freeze-thaw cycles.
Concentration	1 mg/ml (Please refer to the vial label for the specific concentration.)
Immunogen	The immunogen used to generate this antibody corresponds to human EGFR (E746-A750del).
Purification	Affinity purified by Protein A.
Conjugation	Unconjugated

Note

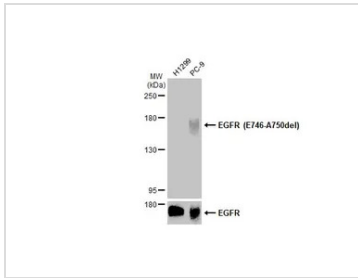
For laboratory research use only. Not for any clinical, therapeutic, or diagnostic use in humans or animals. Not for animal or human consumption.

Purchasers shall not, and agree not to enable third parties to, analyze, copy, reverse engineer or otherwise attempt to determine the structure or sequence of the product.



For full product information, images and publications, please visit our [website](#).

DATA IMAGES



GTx635716 WB Image

Various whole cell extracts were separated by 5% SDS-PAGE, and the membrane was blotted with EGFR (E746-A750del) antibody [HL363] (GTx635716) diluted at 1:500. The HRP-conjugated anti-rabbit IgG antibody (GTx213110-01) was used to detect the primary antibody.

PC-9 cells express EGFR (Glu746-Ala750 deletion) protein and H1299 cells express wide type EGFR protein. (refer to PMID: 22157369)



For full product information, images and publications, please visit our [website](https://www.genetex.com).