

## SARS-CoV-2 (COVID-19) Spike RBD antibody [HL1002] (HRP)

**Cat. No. GTX635791-01**

<b>Host</b>	Rabbit
<b>Clonality</b>	Monoclonal
<b>Isotype</b>	IgG
<b>Applications</b>	ELISA, Neutralizing /Inhibition, Sandwich ELISA
<b>Reactivity</b>	SARS Coronavirus 2

References ( 3 )

Package

50 µl

## Applications

**Application Note**

\*Optimal dilutions/concentrations should be determined by the researcher.

Suggested dilution	Recommended dilution
ELISA	Assay dependent
Neutralizing /Inhibition	Assay dependent
Sandwich ELISA	Assay dependent

**Note : Capture : GTX632604 / GTX635792 / GTX635807, Detection: GTX635791-01.**

Not tested in other applications.

## Properties

<b>Form</b>	Liquid
<b>Buffer</b>	PBS
<b>Preservative</b>	No preservatives
<b>Storage</b>	Store as concentrated solution. Centrifuge briefly prior to opening vial. For short-term storage (1-2 weeks), store at 4°C. For long-term storage, aliquot and store at -20°C or below. Avoid multiple freeze-thaw cycles.
<b>Concentration</b>	0.83 mg/ml (Please refer to the vial label for the specific concentration.)
<b>Immunogen</b>	Full length SARS-coV-2 RBD recombinant protein. (Wuhan-Hu-1)
<b>Purification</b>	Affinity purified by Protein A.
<b>Conjugation</b>	Horseradish peroxidase(HRP)

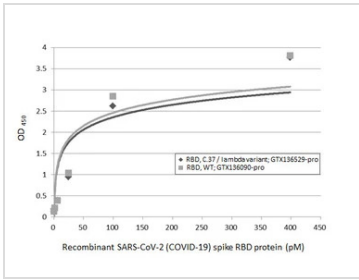
**Note**

For laboratory research use only. Not for any clinical, therapeutic, or diagnostic use in humans or animals. Not for animal or human consumption.

Purchasers shall not, and agree not to enable third parties to, analyze, copy, reverse engineer or otherwise attempt to determine the structure or sequence of the product.

For full product information, images and publications, please visit our [website](#).

DATA IMAGES

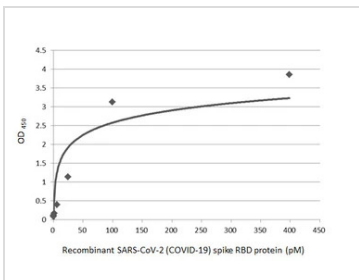


**GTX635791-01 ELISA Image**

Sandwich ELISA detection of recombinant Spike RBD Protein(s) derived from different strains of SARS-CoV-2 virus (ie., Wild type; C.37 lambda variant) using antibodies as below.

**Capture:** SARS-CoV-2 (COVID-19) Spike RBD antibody [HL1014] (GTX635807) (5 µg/mL)

**Detection:** SARS-CoV-2 (COVID-19) Spike RBD antibody [HL1002] (HRP) (GTX635791-01) (1 µg/mL)

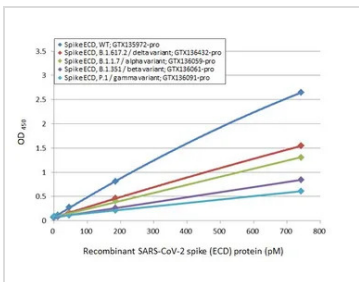


**GTX635791-01 ELISA Image**

Sandwich ELISA detection of recombinant SARS-CoV-2 (COVID-19) Spike RBD protein, His tag (active) (GTX136090-pro) using antibodies as below.

**Capture:** SARS-CoV-2 (COVID-19) Spike RBD antibody [HL1014] (GTX635807) (5 µg/mL)

**Detection:** SARS-CoV-2 (COVID-19) Spike RBD antibody [HL1002] (HRP) (GTX635791-01) (1 µg/mL)

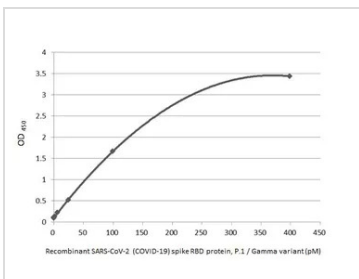


**GTX635791-01 ELISA Image**

Sandwich ELISA detection of recombinant Spike ECD protein(s) derived from different strains of SARS-CoV-2 virus (ie., Wild type; B1.617.2 delta variant; B.1.1.7 alpha variant; B.1.351 beta variant; P.1 gamma variant) using antibodies as below.

**Capture:** SARS-CoV-2 (COVID-19) Spike RBD antibody [HL1014] (GTX635807) (5 µg/mL)

**Detection:** SARS-CoV-2 (COVID-19) Spike RBD antibody [HL1002] (GTX635791-01) (1 µg/mL)



**GTX635791-01 ELISA Image**

Sandwich ELISA detection of recombinant SARS-CoV-2 (COVID-19) Spike RBD Protein, P.1 / Gamma variant, His tag (active) (GTX136043-pro) using antibodies as below.

**Capture:** SARS-CoV-2 (COVID-19) Spike RBD antibody [HL1014] (GTX635807) (5 µg/mL)

**Detection:** SARS-CoV-2 (COVID-19) Spike RBD antibody [HL1002] (HRP) (GTX635791-01) (1 µg/mL)



For full product information, images and publications, please visit our [website](#).