

SARS-CoV-2 (COVID-19) Spike RBD antibody [HL1003] (HRP)

Cat. No. GTX635792-01

| | |
|--------------|---------------------------------------------------------------|
| Host | Rabbit |
| Clonality | Monoclonal |
| Isotype | IgG |
| Applications | ICC/IF, IHC-P, ELISA, Neutralizing/Inhibition, Sandwich ELISA |
| Reactivity | SARS Coronavirus 2 |

References (3)

Package

50 µl

Applications

Application Note

*Optimal dilutions/concentrations should be determined by the researcher.

| Suggested dilution | Recommended dilution |
|--------------------------------------------------------------------------|----------------------|
| ICC/IF | Assay dependent |
| IHC-P | Assay dependent |
| ELISA | Assay dependent |
| Neutralizing/Inhibition | Assay dependent |
| Sandwich ELISA | Assay dependent |
| Note : Capture : GTX635807 / GTX632604 , Detection : GTX635792-01 | |

Not tested in other applications.

Product Note This antibody is able to detect multiple SARS-CoV-2 VOCs, including Omicron variants (BA.1 and BA.2).

| Properties | |
|---------------|----------------------------------------------------------------------------------------------------------------------------------------------------------------------------------------------------------------------------|
| Form | Liquid |
| Buffer | PBS |
| Preservative | No preservatives |
| Storage | Store as concentrated solution. Centrifuge briefly prior to opening vial. For short-term storage (1-2 weeks), store at 4°C. For long-term storage, aliquot and store at -20°C or below. Avoid multiple freeze-thaw cycles. |
| Concentration | 0.83 mg/ml (Please refer to the vial label for the specific concentration.) |
| Immunogen | Recombinant protein corresponding to SARS-CoV-2 (COVID-19) Spike RBD (SARS-CoV-2 (strain Wuhan-Hu-1)). The exact sequence is proprietary. |
| Purification | Affinity purified by Protein A. |
| Conjugation | Horseradish peroxidase(HRP) |

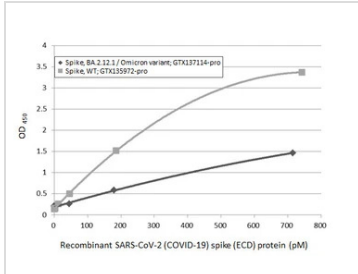


For full product information, images and publications, please visit our [website](#).

Date 2026 / 01 / 29 Page 1 of 2

Note

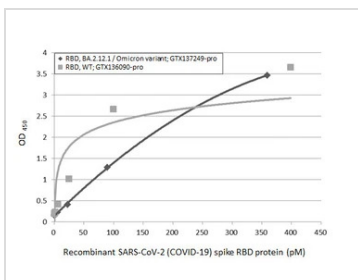
For *In vitro* laboratory use only. Not for any clinical, therapeutic, or diagnostic use in humans or animals. Not for animal or human consumption.

DATA IMAGES

GTX635792-01 ELISA Image

Sandwich ELISA detection of recombinant Spike ECD protein(s) derived from different strains of SARS-CoV-2 virus (ie., Wild type; BA.2.12.1 Omicron variant) using antibodies as below.

Capture: SARS-CoV-2 (COVID-19) Spike RBD antibody [HL1014] (GTX635807) (5 µg/mL)

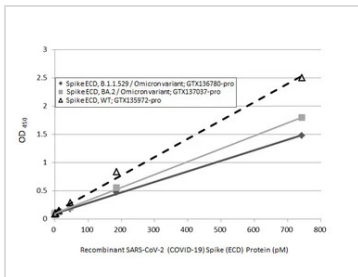
Detection: SARS-CoV-2 (COVID-19) Spike RBD antibody [HL1003] (HRP) (GTX635792-01) (1 µg/mL)


GTX635792-01 ELISA Image

Sandwich ELISA detection of recombinant Spike RBD Protein(s) derived from different strains of SARS-CoV-2 virus (ie., Wild type; BA.2.12.1 Omicron variant) using antibodies as below.

Capture: SARS-CoV-2 (COVID-19) Spike RBD antibody [HL1014] (GTX635807) (5 µg/mL)

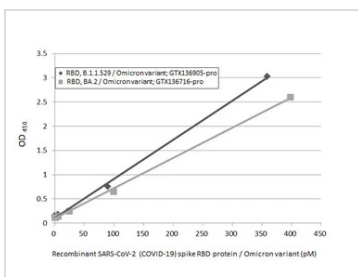
Detection: SARS-CoV-2 (COVID-19) Spike RBD antibody [HL1003] (HRP) (GTX635792-01) (1 µg/mL)


GTX635792-01 ELISA Image

Sandwich ELISA detection of recombinant Spike ECD protein(s) derived from different strains of SARS-CoV-2 virus (ie., Wild type; B.1.1.529 Omicron variant; BA.2 Omicron variant) using antibodies as below.

Capture: SARS-CoV-2 (COVID-19) Spike RBD antibody [HL1014] (GTX635807) (5 µg/mL)

Detection: SARS-CoV-2 (COVID-19) Spike RBD antibody [HL1003] (HRP) (GTX635792-01) (1 µg/mL)


GTX635792-01 ELISA Image

Sandwich ELISA detection of recombinant Spike RBD Protein(s) derived from different strains of SARS-CoV-2 virus (ie., B.1.1.529 Omicron variant; BA.2 Omicron variant) using antibodies as below.

Capture: SARS-CoV-2 (COVID-19) Spike RBD antibody [HL1014] (GTX635807) (5 µg/mL)

Detection: SARS-CoV-2 (COVID-19) Spike RBD antibody [HL1003] (HRP) (GTX635792-01) (1 µg/mL)



For full product information, images and publications, please visit our [website](https://www.genetex.com).