

## SARS-CoV-2 (COVID-19) Spike RBD antibody [HL1004]

Cat. No. GTX635793

<b>Host</b>	Rabbit
<b>Clonality</b>	Monoclonal
<b>Isotype</b>	IgG
<b>Applications</b>	ICC/IF, ELISA, Neutralizing /Inhibition, Sandwich ELISA
<b>Reactivity</b>	SARS Coronavirus 2

References ( 1 )

Package

100 µl, 25 µl

## Applications

## Application Note

\*Optimal dilutions/concentrations should be determined by the researcher.

Suggested dilution	Recommended dilution
ICC/IF	1:100-1:1000
ELISA	Assay dependent
Neutralizing /Inhibition	Assay dependent
Sandwich ELISA	Assay dependent

**Note : This antibody inhibits infection of mammalian cells by live SARS-CoV-2.**

**Capture : GTX632604 / GTX635807, Detection : GTX635793-01 or Capture : GTX635793, Detection : GTX635807. Please notice that GTX635807 needs to be conjugated to HRP to function as the detection antibody when paired with GTX635793. Please contact us for custom HRP-conjugated antibody.**

Not tested in other applications.

## Product Note

This antibody detects SARS-CoV-2 Spike protein, but does not cross-react with SARS-CoV spike protein based on customer feedback. This antibody is able to detect SARS-CoV-2 Spike RBD (N501Y mutant) protein.

## Properties

<b>Form</b>	Liquid
<b>Buffer</b>	PBS
<b>Preservative</b>	No preservatives
<b>Storage</b>	Store as concentrated solution. Centrifuge briefly prior to opening vial. For short-term storage (1-2 weeks), store at 4°C. For long-term storage, aliquot and store at -20°C or below. Avoid multiple freeze-thaw cycles.
<b>Concentration</b>	1 mg/ml (Please refer to the vial label for the specific concentration.)
<b>Immunogen</b>	Recombinant protein corresponding to SARS-CoV-2 Spike RBD (SARS-CoV-2 (strain Wuhan-Hu-1)). The exact sequence is proprietary.
<b>Purification</b>	Affinity purified by Protein A.



For full product information, images and publications, please visit our [website](#).

**Conjugation**

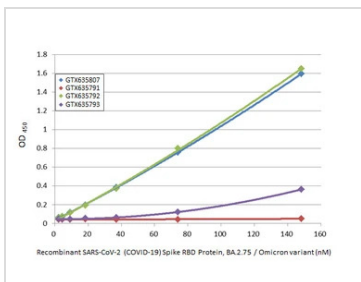
Unconjugated

For laboratory research use only. Not for any clinical, therapeutic, or diagnostic use in humans or animals. Not for animal or human consumption.

**Note**

Purchasers shall not, and agree not to enable third parties to, analyze, copy, reverse engineer or otherwise attempt to determine the structure or sequence of the product.

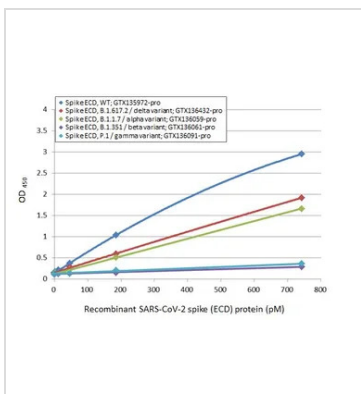
**DATA IMAGES**



**GTX635793 ELISA Image**

Indirect ELISA analysis was performed by coating the plate with recombinant SARS-CoV-2 (COVID-19) Spike RBD Protein, Omicron / BA.2.75 variant, His tag (GTX137422-pro) (148.15-2.31 nM). Coated protein was probed with the specified SARS-CoV-2 (COVID-19) Spike RBD antibodies (1 µg/mL). Goat anti-rabbit IgG antibody (HRP) (GTX213110-01) (1:10000) was used to detect the bound primary antibody.

\*The competitor is not affiliated with GeneTex and does not endorse this product.



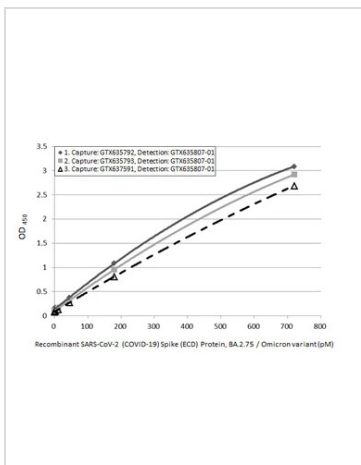
**GTX635793 ELISA Image**

Sandwich ELISA detection of recombinant Spike ECD protein(s) derived from different strains of SARS-CoV-2 virus (ie., Wild type; B1.617.2 delta variant; B.1.1.7 alpha variant; B.1.351 beta variant; P.1 gamma variant) using antibodies as below.

**Capture:** SARS-CoV-2 (COVID-19) Spike RBD antibody [HL1014] (GTX635807) (5 µg/mL)

**Detection:** HRP-conjugated SARS-CoV-2 (COVID-19) Spike RBD antibody [HL1004] (GTX635793) (1 µg/mL)

Please notice that GTX635793 needs to be conjugated to HRP to function as the detection antibody when paired with GTX635807. Please contact us for custom HRP-conjugated antibody.



**GTX635793 ELISA Image**

Sandwich ELISA detection of SARS-CoV-2 (COVID-19) Spike (ECD) Protein, Omicron / BA.2.75 variant, His tag (GTX137533-pro) using ELISA pairs below.

Pair 1:

**Capture:** SARS-CoV-2 (COVID-19) Spike RBD antibody [HL1003] (GTX635792) (5 µg/mL)

**Detection:** SARS-CoV-2 (COVID-19) Spike RBD antibody [HL1014] (HRP) (GTX635807-01) (1 µg/mL)

Pair 2:

**Capture:** SARS-CoV-2 (COVID-19) Spike RBD antibody [HL1004] (GTX635793) (5 µg/mL)

**Detection:** SARS-CoV-2 (COVID-19) Spike RBD antibody [HL1014] (HRP) (GTX635807-01) (1 µg/mL)

Pair 3:

**Capture:** SARS-CoV-2 (COVID-19) Spike RBD Omicron antibody [HL1866] (GTX637591) (5 µg/mL)

**Detection:** SARS-CoV-2 (COVID-19) Spike RBD antibody [HL1014] (HRP) (GTX635807-01) (1 µg/mL)



For full product information, images and publications, please visit our [website](#).