

SARS-CoV-2 (COVID-19) Spike RBD antibody [HL1004] (HRP)

Cat. No. GTX635793-01

Host	Rabbit
Clonality	Monoclonal
Isotype	IgG
Applications	ELISA, Sandwich ELISA
Reactivity	SARS Coronavirus 2

References (1)

Package

50 µl

Applications

Application Note

*Optimal dilutions/concentrations should be determined by the researcher.

Suggested dilution	Recommended dilution
ELISA	Assay dependent
Sandwich ELISA	Assay dependent

Note : Capture : GTX632604 / GTX635807, Detection : GTX635793-01

Not tested in other applications.

Product Note

This antibody detects SARS-CoV-2 Spike protein but does not cross-react with SARS-CoV spike protein based on customer feedback. This antibody is able to detect SARS-CoV-2 Spike RBD (N501Y mutant) and Spike RBD (K417N, E484K, N501Y Mutant) protein.

Properties

Form	Liquid
Buffer	PBS
Preservative	No preservatives
Storage	Store as concentrated solution. Centrifuge briefly prior to opening vial. For short-term storage (1-2 weeks), store at 4°C. For long-term storage, aliquot and store at -20°C or below. Avoid multiple freeze-thaw cycles.
Concentration	0.83 mg/ml (Please refer to the vial label for the specific concentration.)
Immunogen	Recombinant protein corresponding to SARS-CoV-2 Spike RBD. (Strain:Wuhan-Hu-1)
Purification	Affinity purified by Protein A
Conjugation	Horseradish peroxidase(HRP)



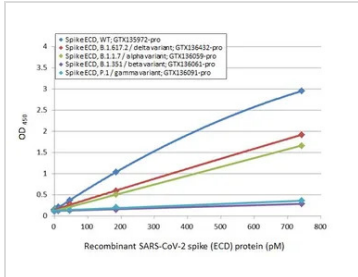
For full product information, images and publications, please visit our [website](#).

Date 2026 / 01 / 31 Page 1 of 2

For laboratory research use only. Not for any clinical, therapeutic, or diagnostic use in humans or animals. Not for animal or human consumption.

Note

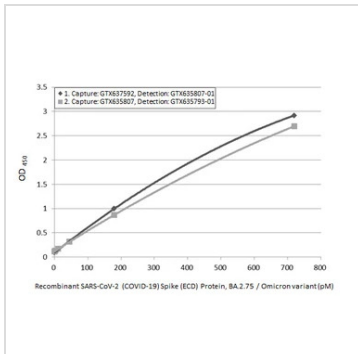
Purchasers shall not, and agree not to enable third parties to, analyze, copy, reverse engineer or otherwise attempt to determine the structure or sequence of the product.

DATA IMAGES

GTx635793-01 ELISA Image

Sandwich ELISA detection of recombinant Spike ECD protein(s) derived from different strains of SARS-CoV-2 virus (ie., Wild type; B.1.1.7 alpha variant; B.1.351 beta variant; P.1 gamma variant; B.1.617.2 delta variant) using antibodies as below.

Capture: SARS-CoV-2 (COVID-19) Spike RBD antibody [HL1014] (GTx635807) (5 µg/mL)

Detection: SARS-CoV-2 (COVID-19) Spike RBD antibody [HL1004] (HRP) (GTx635793-01) (1 µg/mL)


GTx635793-01 ELISA Image

Sandwich ELISA detection of SARS-CoV-2 (COVID-19) Spike (ECD) Protein, Omicron / BA.2.75 variant, His tag (GTx137533-pro) using ELISA pairs below.

Pair 1:

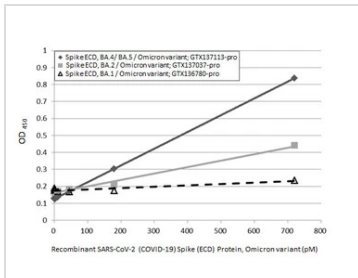
Capture: SARS-CoV-2 (COVID-19) Spike RBD Omicron antibody [HL1867] (GTx637592) (5 µg/mL)

Detection: SARS-CoV-2 (COVID-19) Spike RBD antibody [HL1014] (HRP) (GTx635807-01) (1 µg/mL)

Pair 2:

Capture: SARS-CoV-2 (COVID-19) Spike RBD antibody [HL1014] (GTx635807) (5 µg/mL)

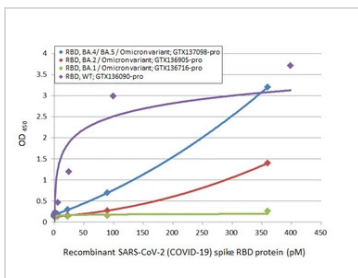
Detection: SARS-CoV-2 (COVID-19) Spike RBD antibody [HL1004] (HRP) (GTx635793-01) (1 µg/mL)


GTx635793-01 ELISA Image

Sandwich ELISA detection of recombinant Spike ECD protein(s) derived from different strains of SARS-CoV-2 virus (ie., BA.1 Omicron variant; BA.2 Omicron variant; BA.4/BA.5 Omicron variant) using antibodies as below.

Capture: SARS-CoV-2 (COVID-19) Spike RBD antibody [HL1014] (GTx635807) (5 µg/mL)

Detection: SARS-CoV-2 (COVID-19) Spike RBD antibody [HL1004] (HRP) (GTx635793-01) (1 µg/mL)


GTx635793-01 ELISA Image

Sandwich ELISA detection of recombinant Spike RBD Protein(s) derived from different strains of SARS-CoV-2 virus (ie., Wild type; BA.1 Omicron variant; BA.2 Omicron variant; BA.4/BA.5 Omicron variant) using antibodies as below.

Capture: SARS-CoV-2 (COVID-19) Spike RBD antibody [HL1014] (GTx635807) (5 µg/mL)

Detection: SARS-CoV-2 (COVID-19) Spike RBD antibody [HL1004] (HRP) (GTx635793-01) (1 µg/mL)



For full product information, images and publications, please visit our [website](https://www.genetex.com).