

SMCR8 antibody [HL1007]

Cat. No. GTX635798

Host	Rabbit
Clonality	Monoclonal
Isotype	IgG
Applications	WB, ICC/IF, IHC-P
Reactivity	Human, Mouse, Rat

References (1)

Package

100 µl, 25 µl

Applications

Application Note

*Optimal dilutions/concentrations should be determined by the researcher.

Suggested dilution	Recommended dilution
WB	1:500-1:3000
ICC/IF	Assay dependent
IHC-P	Assay dependent

Not tested in other applications.

Observed MW (kDa) 140-150 kDa.

Properties

Form	Liquid
Buffer	PBS
Preservative	No preservative
Storage	Store as concentrated solution. Centrifuge briefly prior to opening vial. For short-term storage (1-2 weeks), store at 4°C. For long-term storage, aliquot and store at -20°C or below. Avoid multiple freeze-thaw cycles.
Concentration	1 mg/ml (Please refer to the vial label for the specific concentration.)
Immunogen	Carrier-protein conjugated synthetic peptide encompassing a sequence within the N-terminus region of human SMCR8. The exact sequence is proprietary.
Purification	Affinity purified by Protein A.
Conjugation	Unconjugated

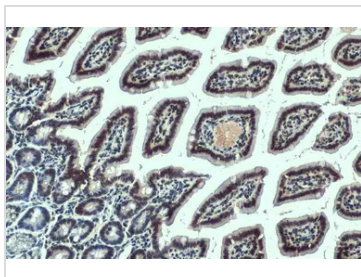
Note

For laboratory research use only. Not for any clinical, therapeutic, or diagnostic use in humans or animals. Not for animal or human consumption.

Purchasers shall not, and agree not to enable third parties to, analyze, copy, reverse engineer or otherwise attempt to determine the structure or sequence of the product.



For full product information, images and publications, please visit our [website](#).

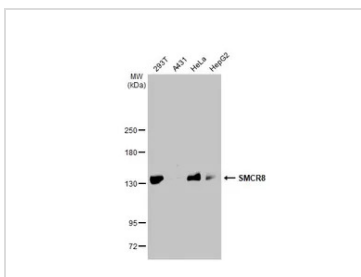
DATA IMAGES

GTX635798 IHC-P Image

SMCR8 antibody [HL1007] detects SMCR8 protein at nucleus by immunohistochemical analysis.

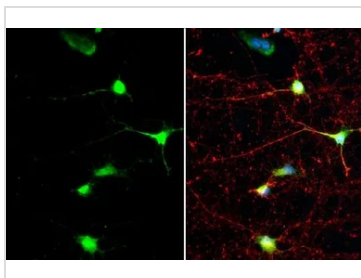
Sample: Paraffin-embedded mouse intestine.

SMCR8 stained by SMCR8 antibody [HL1007] (GTX635798) diluted at 1:100.

Antigen Retrieval: Citrate buffer, pH 6.0, 15 min


GTX635798 WB Image

Various whole cell extracts (30 µg) were separated by 5% SDS-PAGE, and the membrane was blotted with SMCR8 antibody [HL1007] (GTX635798) diluted at 1:1000. The HRP-conjugated anti-rabbit IgG antibody (GTX213110-01) was used to detect the primary antibody.

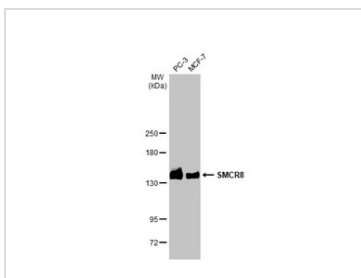

GTX635798 ICC/IF Image

SMCR8 antibody [HL1007] detects SMCR8 protein at nucleus by immunofluorescent analysis.

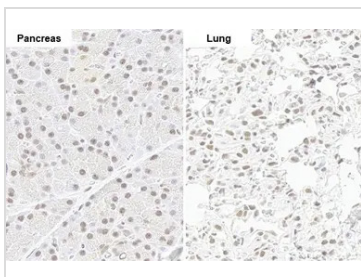
Sample: DIV10 rat E19 primary cortical neuron cells were fixed in 4% paraformaldehyde at RT for 15 min.

Green: SMCR8 stained by SMCR8 antibody [HL1007] (GTX635798) diluted at 1:500.

Red: beta Tubulin 3/ Tuj1 stained by beta Tubulin 3/ Tuj1 antibody [GT11710] (GTX631836) diluted at 1:500.


GTX635798 WB Image

Various whole cell extracts (30 µg) were separated by 5% SDS-PAGE, and the membrane was blotted with SMCR8 antibody [HL1007] (GTX635798) diluted at 1:1000. The HRP-conjugated anti-rabbit IgG antibody (GTX213110-01) was used to detect the primary antibody.


GTX635798 IHC-P Image

SMCR8 antibody [HL1007] detects SMCR8 protein by immunohistochemical analysis.

Sample: Paraffin-embedded rat tissue.

SMCR8 stained by SMCR8 antibody [HL1007] (GTX635798) diluted at 1:100.

Antigen Retrieval: Citrate buffer, pH 6.0, 15 min



For full product information, images and publications, please visit our [website](https://www.genetex.com).