

GSK3 beta antibody [GT16711]

Cat. No. GTX635816

| | |
|-------------|-------------------|
| Host | Mouse |
| Clonality | Monoclonal |
| Isotype | IgG2a |
| Application | WB, ICC/IF, IHC-P |
| Reactivity | Human, Mouse, Rat |

Reference (1)

Package

100 µl, 25 µl

APPLICATION

Application Note

*Optimal dilutions/concentrations should be determined by the researcher.

| Suggested dilution | Recommended dilution |
|--------------------|----------------------|
| WB | 1:500-1:3000 |
| ICC/IF | Assay dependent |
| IHC-P | Assay dependent |

Not tested in other applications.

Calculated MW 47 kDa. ([Note](#))

PROPERTIES

| | |
|---------------|--|
| Form | Liquid |
| Buffer | PBS, 20% Glycerol |
| Preservative | No Preservative |
| Storage | Store as concentrated solution. Centrifuge briefly prior to opening vial. For short-term storage (1-2 weeks), store at 4°C. For long-term storage, aliquot and store at -20°C or below. Avoid multiple freeze-thaw cycles. |
| Concentration | 1 mg/ml (Please refer to the vial label for the specific concentration.) |
| Immunogen | Recombinant protein encompassing a sequence within the C-terminus region of human GSK3 beta. The exact sequence is proprietary. |
| Purification | Affinity purified by Protein A. |
| Conjugation | Unconjugated |

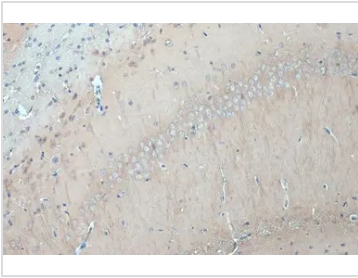
Note

For laboratory research use only. Not for any clinical, therapeutic, or diagnostic use in humans or animals. Not for animal or human consumption.

Purchasers shall not, and agree not to enable third parties to, analyze, copy, reverse engineer or otherwise attempt to determine the structure or sequence of the product.



For full product information, images and publications, please visit our [website](#).

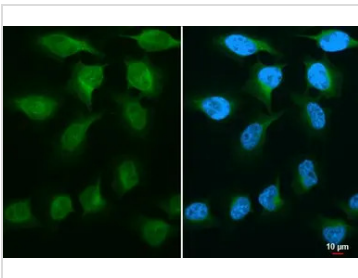
DATA IMAGES

GTX635816 IHC-P Image

GSK3 beta antibody [GT16711] detects GSK3 beta protein at cell membrane and cytoplasm by immunohistochemical analysis.

Sample: Paraffin-embedded mouse cerebellum.

GSK3 beta stained by GSK3 beta antibody [GT16711] (GTX635816) diluted at 1:200.

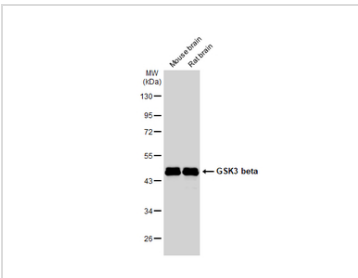
Antigen Retrieval: Citrate buffer, pH 6.0, 15 min


GTX635816 ICC/IF Image

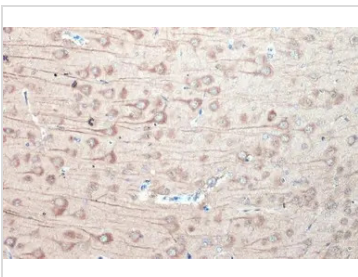
GSK3 beta antibody detects GSK3 beta protein at nucleus by immunofluorescent analysis.

Sample: HeLa cells were fixed in 4% paraformaldehyde at RT for 15 min.

Green: GSK3 beta stained by GSK3 beta antibody (GTX635816) diluted at 1:500.


GTX635816 WB Image

Various tissue extracts (50 µg) were separated by 10% SDS-PAGE, and the membrane was blotted with GSK3 beta antibody [GT16711] (GTX635816) diluted at 1:10000. The HRP-conjugated anti-mouse IgG antibody (GTX213111-01) was used to detect the primary antibody.

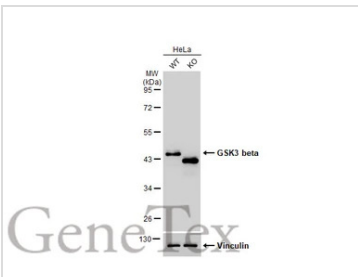

GTX635816 IHC-P Image

GSK3 beta antibody [GT16711] detects GSK3 beta protein at cell membrane and cytoplasm by immunohistochemical analysis.

Sample: Paraffin-embedded rat cerebellum.

GSK3 beta stained by GSK3 beta antibody [GT16711] (GTX635816) diluted at 1:200.

Antigen Retrieval: Citrate buffer, pH 6.0, 15 min


GTX635816 WB Image

Wild-type (WT) and GSK3 beta knockout (KO) HeLa cell extracts (30 µg) were separated by 10% SDS-PAGE, and the membrane was blotted with GSK3 beta antibody [GT16711] (GTX635816) diluted at 1:1000. The HRP-conjugated anti-mouse IgG antibody (GTX213111-01) was used to detect the primary antibody.



For full product information, images and publications, please visit our [website](https://www.genetex.com).