

# Anterior Gradient 2 antibody [HL1024]

**Cat. No. GTX635838**

|                     |                   |
|---------------------|-------------------|
| <b>Host</b>         | Rabbit            |
| <b>Clonality</b>    | Monoclonal        |
| <b>Isotype</b>      | IgG               |
| <b>Applications</b> | WB, ICC/IF, IHC-P |
| <b>Reactivity</b>   | Human, Mouse, Rat |

**Package**  
100 µl, 25 µl

## Applications

### Application Note

\*Optimal dilutions/concentrations should be determined by the researcher.

| Suggested dilution | Recommended dilution |
|--------------------|----------------------|
| WB                 | 1:500-1:3000         |
| ICC/IF             | Assay dependent      |
| IHC-P              | Assay dependent      |

Not tested in other applications.

**Observed MW (kDa)** 20 kDa.

## Properties

|                      |  |
|----------------------|--|
| <b>Form</b>          | Liquid   |
| <b>Buffer</b>        | PBS  |
| <b>Preservative</b>  | No preservative  |
| <b>Storage</b>       | Store as concentrated solution. Centrifuge briefly prior to opening vial. For short-term storage (1-2 weeks), store at 4°C. For long-term storage, aliquot and store at -20°C or below. Avoid multiple freeze-thaw cycles. |
| <b>Concentration</b> | 1 mg/ml (Please refer to the vial label for the specific concentration.)   |
| <b>Immunogen</b>     | Carrier-protein conjugated synthetic peptide encompassing a sequence within the N-terminus region of human Anterior Gradient 2. The exact sequence is proprietary.   |
| <b>Purification</b>  | Affinity purified by Protein A.  |
| <b>Conjugation</b>   | Unconjugated   |

### Note

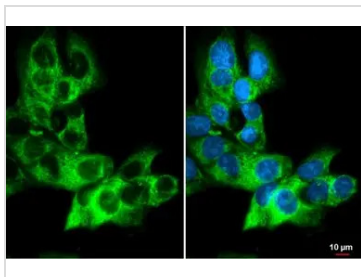
For laboratory research use only. Not for any clinical, therapeutic, or diagnostic use in humans or animals. Not for animal or human consumption.

Purchasers shall not, and agree not to enable third parties to, analyze, copy, reverse engineer or otherwise attempt to determine the structure or sequence of the product.



For full product information, images and publications, please visit our [website](#).

## DATA IMAGES



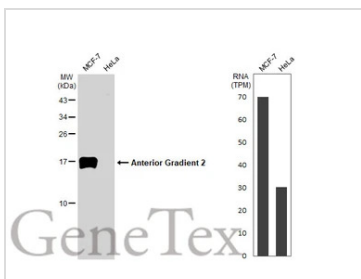
### GTx635838 ICC/IF Image

Anterior Gradient 2 antibody [HL1024] detects Anterior Gradient 2 protein at cytoplasm by immunofluorescent analysis.

Sample: MCF-7 cells were fixed in ice-cold MeOH for 5 min.

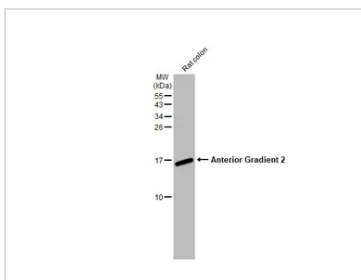
Green: Anterior Gradient 2 stained by Anterior Gradient 2 antibody [HL1024] (GTx635838) diluted at 1:500.

Blue: Fluoroshield with DAPI (GTx30920).



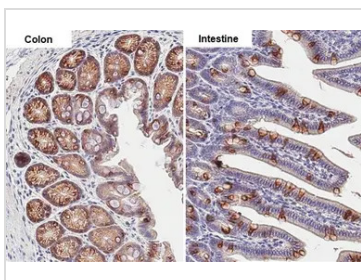
### GTx635838 WB Image

Various whole cell extracts (30 µg) were separated by 15% SDS-PAGE, and the membrane was blotted with Anterior Gradient 2 antibody [HL1024] (GTx635838) diluted at 1:1000. The HRP-conjugated anti-rabbit IgG antibody (GTx213110-01) was used to detect the primary antibody.



### GTx635838 WB Image

Rat tissue extract (50 µg) was separated by 15% SDS-PAGE, and the membrane was blotted with Anterior Gradient 2 antibody [HL1024] (GTx635838) diluted at 1:1000. The HRP-conjugated anti-rabbit IgG antibody (GTx213110-01) was used to detect the primary antibody.



### GTx635838 IHC-P Image

Anterior Gradient 2 antibody [HL1024] detects Anterior Gradient 2 protein by immunohistochemical analysis.

Sample: Paraffin-embedded mouse tissue.

Anterior Gradient 2 stained by Anterior Gradient 2 antibody [HL1024] (GTx635838) diluted at 1:100.

Antigen Retrieval: Citrate buffer, pH 6.0, 15 min



For full product information, images and publications, please visit our [website](https://www.genetex.com).