

CTGF antibody [GT28711]

Cat. No. GTX635865

Host	Mouse
Clonality	Monoclonal
Isotype	IgG1
Application	WB, ICC/IF, IHC-P
Reactivity	Human, Mouse

Package
100 µl, 25 µl

APPLICATION

Application Note

*Optimal dilutions/concentrations should be determined by the researcher.

Suggested dilution	Recommended dilution
WB	1:500-1:3000
ICC/IF	Assay dependent
IHC-P	Assay dependent

Not tested in other applications.

Calculated MW 38 kDa. ([Note](#))

PROPERTIES

Form	Liquid
Buffer	PBS, 20% Glycerol
Preservative	No Preservative
Storage	Store as concentrated solution. Centrifuge briefly prior to opening vial. For short-term storage (1-2 weeks), store at 4°C. For long-term storage, aliquot and store at -20°C or below. Avoid multiple freeze-thaw cycles.
Concentration	0.8 mg/ml (Please refer to the vial label for the specific concentration.)
Immunogen	Recombinant protein encompassing a sequence within the center region of human CTGF. The exact sequence is proprietary.
Purification	Affinity purified by Protein G.
Conjugation	Unconjugated

Note

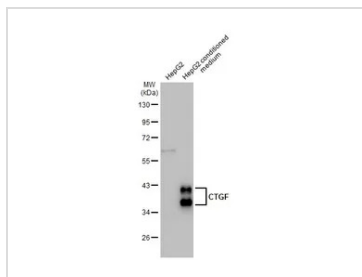
For laboratory research use only. Not for any clinical, therapeutic, or diagnostic use in humans or animals. Not for animal or human consumption.

Purchasers shall not, and agree not to enable third parties to, analyze, copy, reverse engineer or otherwise attempt to determine the structure or sequence of the product.



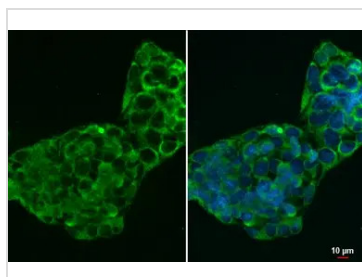
For full product information, images and publications, please visit our [website](#).

DATA IMAGES



GTX635865 WB Image

HepG2 whole cell extract and conditioned medium (30 µg) were separated by 10% SDS-PAGE, and the membrane was blotted with CTGF antibody [GT28711] (GTX635865) diluted at 1:1000. The HRP-conjugated anti-mouse IgG antibody (GTX213111-01) was used to detect the primary antibody.

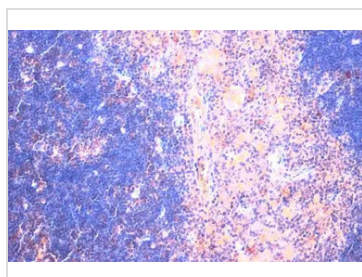


GTX635865 ICC/IF Image

CTGF antibody [GT28711] detects CTGF protein by immunofluorescent analysis.

Sample: HepG2 cells were fixed in ice-cold MeOH for 5 min.

Green: CTGF stained by CTGF antibody [GT28711] (GTX635865) diluted at 1:500.



GTX635865 IHC-P Image

CTGF antibody [GT28711] detects CTGF protein by immunohistochemical analysis.

Sample: Paraffin-embedded mouse thymus gland.

CTGF stained by CTGF antibody [GT28711] (GTX635865) diluted at 1:200.

Antigen Retrieval: Citrate buffer, pH 6.0, 15 min



For full product information, images and publications, please visit our [website](https://www.genetex.com).