

## Myelin basic protein antibody [HL1033]

Cat. No. GTX635873

Host	Rabbit
Clonality	Monoclonal
Isotype	IgG
Application	WB, ICC/IF, IHC-P, IHC-Fr
Reactivity	Human, Mouse, Rat

Reference ( 1 )

Package

100 µl, 25 µl

## APPLICATION

## Application Note

\*Optimal dilutions/concentrations should be determined by the researcher.

Suggested dilution	Recommended dilution
WB	1:5000-1:500000
ICC/IF	Assay dependent
IHC-P	Assay dependent
IHC-Fr	Assay dependent

Not tested in other applications.

Calculated MW 27 kDa. ( [Note](#) )

## PROPERTIES

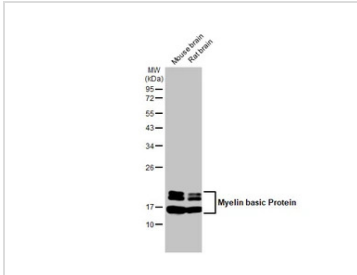
Form	Liquid
Buffer	PBS
Preservative	No preservative
Storage	Store as concentrated solution. Centrifuge briefly prior to opening vial. For short-term storage (1-2 weeks), store at 4°C. For long-term storage, aliquot and store at -20°C or below. Avoid multiple freeze-thaw cycles.
Concentration	1 mg/ml (Please refer to the vial label for the specific concentration.)
Immunogen	Carrier-protein conjugated synthetic peptide encompassing a sequence within the C-terminus region of mouse Myelin basic Protein. The exact sequence is proprietary.
Purification	Affinity purified by Protein A.
Conjugation	Unconjugated

For full product information, images and publications, please visit our [website](#).

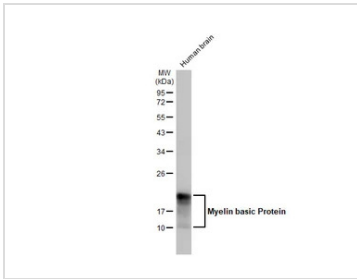
For laboratory research use only. Not for any clinical, therapeutic, or diagnostic use in humans or animals. Not for animal or human consumption.

**Note**

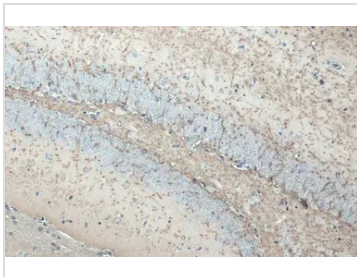
Purchasers shall not, and agree not to enable third parties to, analyze, copy, reverse engineer or otherwise attempt to determine the structure or sequence of the product.

**DATA IMAGES**

**GTX635873 WB Image**

Various tissue extracts (50 µg) were separated by 12% SDS-PAGE, and the membrane was blotted with Myelin basic Protein antibody [HL1033] (GTX635873) diluted at 1:500000. The HRP-conjugated anti-rabbit IgG antibody (GTX213110-01) was used to detect the primary antibody.


**GTX635873 WB Image**

Human tissue extract (30 µg) was separated by 12% SDS-PAGE, and the membrane was blotted with Myelin basic Protein antibody [HL1033] (GTX635873) diluted at 1:10000. The HRP-conjugated anti-rabbit IgG antibody (GTX213110-01) was used to detect the primary antibody.

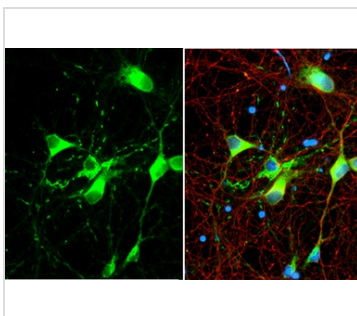

**GTX635873 IHC-P Image**

Myelin basic Protein antibody [HL1033] detects Myelin basic Protein protein at cell membrane by immunohistochemical analysis.

Sample: Paraffin-embedded mouse brain.

Myelin basic Protein stained by Myelin basic Protein antibody [HL1033] (GTX635873) diluted at 1:200.

Antigen Retrieval: Citrate buffer, pH 6.0, 15 min


**GTX635873 ICC/IF Image**

Myelin basic Protein antibody [HL1033] detects Myelin basic Protein protein by immunofluorescent analysis.

Sample: DIV9 rat cortical neuron and Glia cell cells were fixed in 4% paraformaldehyde at RT for 15 min.

Green: Myelin basic Protein stained by Myelin basic Protein antibody [HL1033] (GTX635873) diluted at 1:250.

Red: Tau, a Axon marker, stained by Tau antibody [GT287] (GTX634809) diluted at 1:500.

Blue: Fluoroshield with DAPI (GTX30920).



For full product information, images and publications, please visit our [website](https://www.genetex.com).