

## Myelin basic protein antibody [HL1033]

Cat. No. GTX635873

<b>Host</b>	Rabbit
<b>Clonality</b>	Monoclonal
<b>Isotype</b>	IgG
<b>Applications</b>	WB, IHC-P, IHC-Fr
<b>Reactivity</b>	Human, Mouse, Rat

References ( 3 )

Package

100 µl, 25 µl

## Applications

## Application Note

\*Optimal dilutions/concentrations should be determined by the researcher.

Suggested dilution	Recommended dilution
WB	1:5000-1:500000
IHC-P	Assay dependent
IHC-Fr	Assay dependent

Not tested in other applications.

**Observed MW (kDa)** 12-20 kDa.

## Properties

<b>Form</b>	Liquid
<b>Buffer</b>	PBS
<b>Preservative</b>	No preservatives
<b>Storage</b>	Store as concentrated solution. Centrifuge briefly prior to opening vial. For short-term storage (1-2 weeks), store at 4°C. For long-term storage, aliquot and store at -20°C or below. Avoid multiple freeze-thaw cycles.
<b>Concentration</b>	1 mg/ml (Please refer to the vial label for the specific concentration.)
<b>Immunogen</b>	Carrier-protein conjugated synthetic peptide encompassing a sequence within the C-terminus region of mouse Myelin basic Protein. The exact sequence is proprietary.
<b>Purification</b>	Affinity purified by Protein A.
<b>Conjugation</b>	Unconjugated

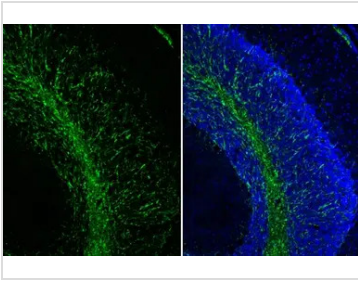
## Note

For laboratory research use only. Not for any clinical, therapeutic, or diagnostic use in humans or animals. Not for animal or human consumption.

Purchasers shall not, and agree not to enable third parties to, analyze, copy, reverse engineer or otherwise attempt to determine the structure or sequence of the product.

For full product information, images and publications, please visit our [website](#).

DATA IMAGES



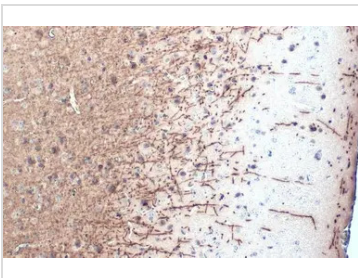
**GTX635873 IHC-Fr Image**

Myelin basic protein antibody [HL1033] detects Myelin basic protein protein at cell membrane by immunohistochemical analysis.

Sample: Frozen-sectioned mouse cerebellum.

Green: Myelin basic protein stained by Myelin basic protein antibody [HL1033] (GTX635873) diluted at 1:100.

Blue: Hoechst 33342 staining.



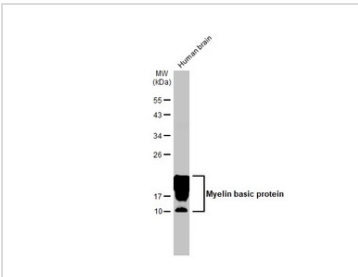
**GTX635873 IHC-P Image**

Myelin basic Protein antibody [HL1033] detects Myelin basic Protein protein at cell membrane by immunohistochemical analysis.

Sample: Paraffin-embedded mouse brain.

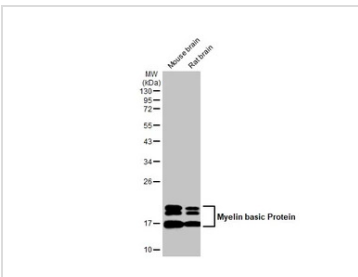
Myelin basic Protein stained by Myelin basic Protein antibody [HL1033] (GTX635873) diluted at 1:200.

Antigen Retrieval: Citrate buffer, pH 6.0, 15 min



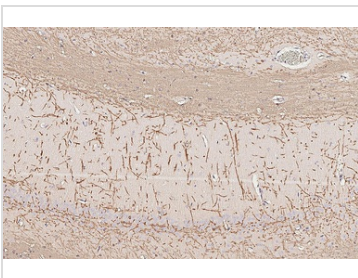
**GTX635873 WB Image**

Human tissue extract (30 µg) was separated by 12% SDS-PAGE, and the membrane was blotted with Myelin basic protein antibody [HL1033] (GTX635873) diluted at 1:10000. The HRP-conjugated anti-rabbit IgG antibody (GTX213110-01) was used to detect the primary antibody.



**GTX635873 WB Image**

Various tissue extracts (50 µg) were separated by 12% SDS-PAGE, and the membrane was blotted with Myelin basic Protein antibody [HL1033] (GTX635873) diluted at 1:500000. The HRP-conjugated anti-rabbit IgG antibody (GTX213110-01) was used to detect the primary antibody.



**GTX635873 IHC-P Image**

Myelin basic protein antibody [HL1033] detects Myelin basic protein protein by immunohistochemical analysis.

Sample: Paraffin-embedded rat hippocampus.

Myelin basic protein stained by Myelin basic protein antibody [HL1033] (GTX635873) diluted at 1:200.

Antigen Retrieval: Citrate buffer, pH 6.0, 15 min



For full product information, images and publications, please visit our [website](http://www.genetex.com).