

# GRK2 (phospho Ser670) antibody [HL1035]

**Cat. No. GTX635875**

<b>Host</b>	Rabbit
<b>Clonality</b>	Monoclonal
<b>Isotype</b>	IgG
<b>Applications</b>	WB, IHC-P
<b>Reactivity</b>	Human, Mouse

**Package**  
100 µl, 25 µl

## Applications

### Application Note

\*Optimal dilutions/concentrations should be determined by the researcher.

Suggested dilution	Recommended dilution
WB	1:500-1:3000
IHC-P	Assay dependent

Not tested in other applications.

**Observed MW (kDa)** 80 kDa.

## Properties

<b>Form</b>	Liquid
<b>Buffer</b>	PBS
<b>Preservative</b>	No preservatives
<b>Storage</b>	Store as concentrated solution. Centrifuge briefly prior to opening vial. For short-term storage (1-2 weeks), store at 4°C. For long-term storage, aliquot and store at -20°C or below. Avoid multiple freeze-thaw cycles.
<b>Concentration</b>	1 mg/ml (Please refer to the vial label for the specific concentration.)
<b>Immunogen</b>	Carrier-protein conjugated synthetic peptide surrounding phospho Ser670 of human GRK2. The exact sequence is proprietary.
<b>Purification</b>	Affinity purified by Protein A.
<b>Conjugation</b>	Unconjugated

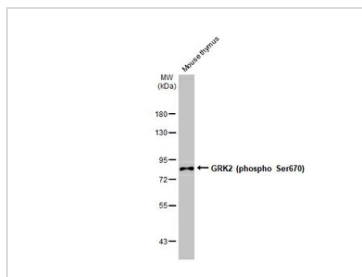
### Note

For laboratory research use only. Not for any clinical, therapeutic, or diagnostic use in humans or animals. Not for animal or human consumption.

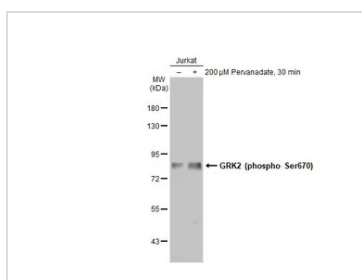
Purchasers shall not, and agree not to enable third parties to, analyze, copy, reverse engineer or otherwise attempt to determine the structure or sequence of the product.



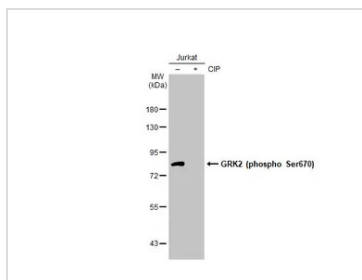
For full product information, images and publications, please visit our [website](#).

**DATA IMAGES**

**GTX635875 WB Image**

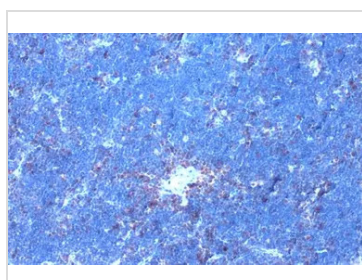
Various tissue extracts (50 µg) was separated by 7.5% SDS-PAGE, and the membrane was blotted with GRK2 (phospho Ser670) antibody [HL1035] (GTX635875) diluted at 1:500. The HRP-conjugated anti-rabbit IgG antibody (GTX213110-01) was used to detect the primary antibody.


**GTX635875 WB Image**

Untreated (-) and treated (+) Jurkat whole cell extracts (30 µg) were separated by 7.5% SDS-PAGE, and the membrane was blotted with GRK2 (phospho Ser670) antibody [HL1035] (GTX635875) diluted at 1:500. The HRP-conjugated anti-rabbit IgG antibody (GTX213110-01) was used to detect the primary antibody.


**GTX635875 WB Image**

Untreated (-) and treated (+) Jurkat whole cell extracts (30 µg) were separated by 7.5% SDS-PAGE, and the membrane was blotted with GRK2 (phospho Ser670) antibody [HL1035] (GTX635875) diluted at 1:500. The HRP-conjugated anti-rabbit IgG antibody (GTX213110-01) was used to detect the primary antibody.

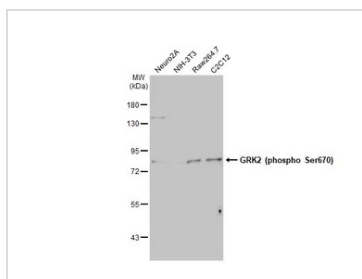

**GTX635875 IHC-P Image**

GRK2 (phospho Ser670) antibody [HL1035] detects GRK2 (phospho Ser670) protein at cell membrane and cytoplasm by immunohistochemical analysis.

Sample: Paraffin-embedded mouse thymus gland.

GRK2 (phospho Ser670) stained by GRK2 (phospho Ser670) antibody [HL1035] (GTX635875) diluted at 1:200.

Antigen Retrieval: Citrate buffer, pH 6.0, 15 min


**GTX635875 WB Image**

Various whole cell extracts (30 µg) were separated by 7.5% SDS-PAGE, and the membrane was blotted with GRK2 (phospho Ser670) antibody [HL1035] (GTX635875) diluted at 1:500. The HRP-conjugated anti-rabbit IgG antibody (GTX213110-01) was used to detect the primary antibody.



For full product information, images and publications, please visit our [website](https://www.genetex.com).