

ACE2 antibody [GT19410]

Cat No. GTX635897

Host	Mouse
Clonality	Monoclonal
Isotype	IgG2b
Application	WB, IHC-P, ELISA, Lateral Flow, Sandwich ELISA
Reactivity	Human, Mouse

★★★★★ Review (1)

Package
100 µl, 25 µl

APPLICATION

Application Note

*Optimal dilutions/concentrations should be determined by the researcher.

Suggested dilution	Dilution
WB	Assay dependent
IHC-P	1:100-1:1000
ELISA	Assay dependent
Lateral Flow	Assay dependent
Sandwich ELISA	Assay dependent

Note : Capture : GTX635897 , Detection : GTX628914-01

Not tested in other applications.

Calculated MW 92 kDa. ([Note](#))

PROPERTIES

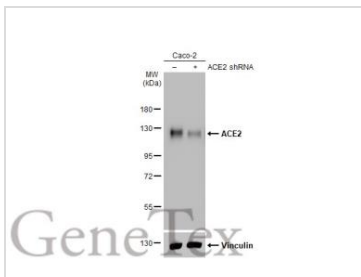
Form	Liquid
Buffer	PBS
Preservative	No Preservative
Storage	Store as concentrated solution. Centrifuge briefly prior to opening vial. For short-term storage (1-2 weeks), store at 4°C. For long-term storage, aliquot and store at -20°C or below. Avoid multiple freeze-thaw cycles.
Concentration	1 mg/ml (Please refer to the vial label for the specific concentration.)
Immunogen	Recombinant protein encompassing a sequence within the center region of human ACE2. The exact sequence is proprietary.
Purification	Affinity purified by Protein A
Conjugation	Unconjugated



For full product information, images and publications, please visit our [website](#).

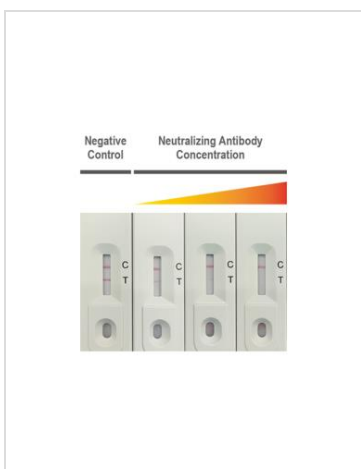
Note For laboratory use only. Not for any clinical, therapeutic, or diagnostic use in humans or animals. Not for animal or human consumption.

DATA IMAGES



GTX635897 WB Image

Non-transfected (-) and transfected (+) Caco-2 whole cell extracts (30 µg) were separated by 7.5% SDS-PAGE, and the membrane was blotted with ACE2 antibody [GT19410] (GTX635897) diluted at 1:1000. The HRP-conjugated anti-mouse IgG antibody (GTX213111-01) was used to detect the primary antibody.



GTX635897 Lateral Flow Image

SARS-CoV-2 neutralizing antibody interferes with the binding of ACE2 and spike RBD proteins. The signal intensity of the test line (T) decreases due to competition by the neutralizing antibody, while the control line (C) demonstrates a valid test.

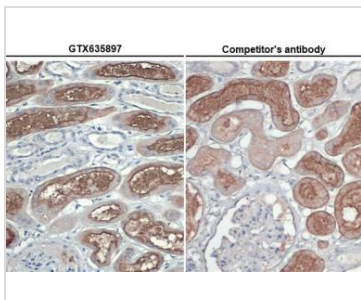
Neutralizing Antibody: Spike RBD antibody [HL1002] (GTX635791)

C Line:

Detector: Colloidal gold-conjugated human ACE2 (ECO) protein (GTX135683-pro) / **Capture:** Anti-human ACE2 antibody (GTX635897)

T Line:

Detector: Colloidal gold-conjugated human ACE2 (ECO) protein (GTX135683-pro) / **Capture:** SARS-CoV-2 Spike RBD protein



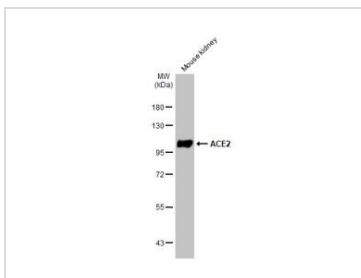
GTX635897 IHC-P Image

ACE2 antibody [GT19410] detects ACE2 protein at cell membrane by immunohistochemical analysis. Sample: Paraffin-embedded human kidney.

ACE2 stained by ACE2 antibody [GT19410] (GTX635897) diluted at 1:1000 and competitor's antibody diluted at 1:1000.

Antigen Retrieval: Citrate buffer, pH 6.0, 15 min (left) and Tris-EDTA buffer, pH 9.0, 15min (right)

*Competitor's antibody is not affiliated with GeneTex and does not endorse this product.



GTX635897 WB Image

Mouse tissue extract (50 µg) was separated by 7.5% SDS-PAGE, and the membrane was blotted with ACE2 antibody [GT19410] (GTX635897) diluted at 1:1000. The HRP-conjugated anti-mouse IgG antibody (GTX213111-01) was used to detect the primary antibody.



For full product information, images and publications, please visit our [website](https://www.genetex.com).