

EpCAM antibody [GT25512]

Cat. No. GTX635967

Host	Mouse
Clonality	Monoclonal
Isotype	IgG2a
Applications	WB, ICC/IF, IHC-P, FCM
Reactivity	Human

Package

100 µl, 25 µl

PRODUCT

Summary

EpCAM antibody recognizes epithelial cell adhesion molecule (EpCAM), a transmembrane glycoprotein with a predicted molecular weight of ~35 kDa. EpCAM is upregulated in epithelial cells during epithelial-mesenchymal transition (EMT) and is used as a diagnostic marker of many carcinomas and circulating tumor cells. Detection of EpCAM by immunohistochemistry is important for the diagnosis of certain epithelial malignancies.

Applications

Application Note

*Optimal dilutions/concentrations should be determined by the researcher.

Suggested dilution	Recommended dilution
WB	1:500-1:3000
ICC/IF	1:100-1:1000
IHC-P	Assay dependent
FCM	Assay dependent

Not tested in other applications.

Calculated MW 35 kDa. ([Note](#))

Product Note

This antibody was raised against human EpCAM Extracellular domain. We do not recommend use of this product for Mouse samples.

Properties

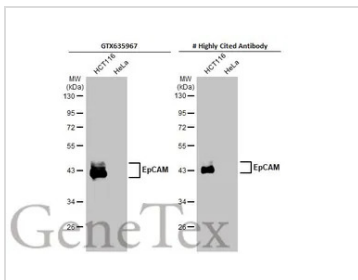
Form	Liquid
Buffer	PBS, 20% Glycerol
Preservative	No preservatives
Storage	Store as concentrated solution. Centrifuge briefly prior to opening vial. For short-term storage (1-2 weeks), store at 4°C. For long-term storage, aliquot and store at -20°C or below. Avoid multiple freeze-thaw cycles.
Concentration	1 mg/ml (Please refer to the vial label for the specific concentration.)



For full product information, images and publications, please visit our [website](#).

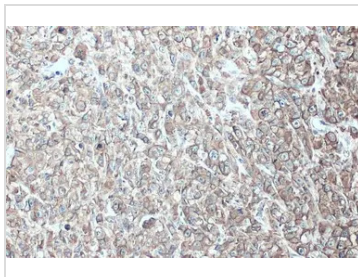
Immunogen	Recombinant protein encompassing a sequence within the Extracellular domain of human EpCAM. The exact sequence is proprietary.
Purification	Affinity purified by Protein A.
Conjugation	Unconjugated
Note	For laboratory research use only. Not for any clinical, therapeutic, or diagnostic use in humans or animals. Not for animal or human consumption. Purchasers shall not, and agree not to enable third parties to, analyze, copy, reverse engineer or otherwise attempt to determine the structure or sequence of the product.

DATA IMAGES



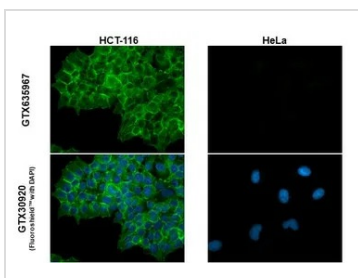
GTX635967 WB Image

Various whole cell extracts (30 µg) were separated by 10% SDS-PAGE, and the membranes were blotted with EpCAM antibody [GT25512] (GTX635967) diluted at 1:1000 and competitor's antibody diluted at 1:1000. The HRP-conjugated anti-mouse IgG antibody (GTX2131



GTX635967 IHC-P Image

EpCAM antibody [GT25512] detects EpCAM protein at cell membrane by immunohistochemical analysis.
Sample: Paraffin-embedded MDA-MB-231 xenograft.
EpCAM stained by EpCAM antibody [GT25512] (GTX635967) diluted at 1:200.
Antigen Retrieval: Citrate buffer, pH 6.0, 15 min



GTX635967 ICC/IF Image

EpCAM antibody [GT25512] detects EpCAM protein at cell membrane by immunofluorescent analysis.
Sample: HCT116 and HeLa cells were fixed in ice-cold MeOH for 5 min.
Green: EpCAM stained by EpCAM antibody [GT25512] (GTX635967) diluted at 1:500.



For full product information, images and publications, please visit our [website](https://www.genetex.com).