

RPB2 antibody [HL1043]

Cat. No. GTX635977

Host	Rabbit
Clonality	Monoclonal
Isotype	IgG
Application	WB, IHC-P, IHC-Wm
Reactivity	Human, Mouse, Rat, Zebrafish, Cat, Dog

Package
100 µl, 25 µl

APPLICATION

Application Note

*Optimal dilutions/concentrations should be determined by the researcher.

Suggested dilution	Recommended dilution
WB	1:500-1:3000
IHC-P	Assay dependent
IHC-Wm	Assay dependent

Not tested in other applications.

Calculated MW 134 kDa. ([Note](#))

PROPERTIES

Form	Liquid
Buffer	PBS
Preservative	No preservative
Storage	Store as concentrated solution. Centrifuge briefly prior to opening vial. For short-term storage (1-2 weeks), store at 4°C. For long-term storage, aliquot and store at -20°C or below. Avoid multiple freeze-thaw cycles.
Concentration	1 mg/ml (Please refer to the vial label for the specific concentration.)
Immunogen	Recombinant protein encompassing a sequence within the N-terminus region of human RPB2. The exact sequence is proprietary.
Purification	Affinity purified by Protein A.
Conjugation	Unconjugated

Note

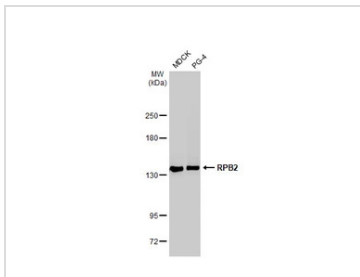
For laboratory research use only. Not for any clinical, therapeutic, or diagnostic use in humans or animals. Not for animal or human consumption.

Purchasers shall not, and agree not to enable third parties to, analyze, copy, reverse engineer or otherwise attempt to determine the structure or sequence of the product.



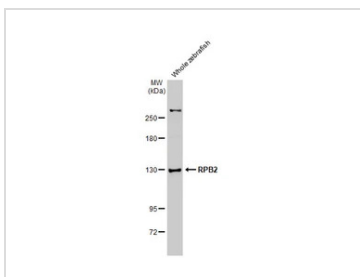
For full product information, images and publications, please visit our [website](#).

DATA IMAGES



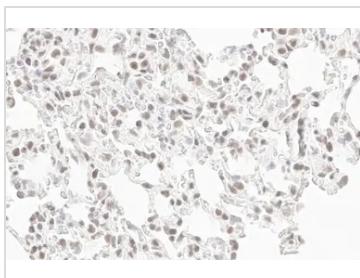
GTX635977 WB Image

Various whole cell extracts (30 µg) were separated by 5% SDS-PAGE, and the membrane was blotted with RPB2 antibody [HL1043] (GTX635977) diluted at 1:1000. The HRP-conjugated anti-rabbit IgG antibody (GTX213110-01) was used to detect the primary antibody.



GTX635977 WB Image

Whole zebrafish extract (30 µg) was separated by 5% SDS-PAGE, and the membrane was blotted with RPB2 antibody [HL1043] (GTX635977) diluted at 1:1000. The HRP-conjugated anti-rabbit IgG antibody (GTX213110-01) was used to detect the primary antibody.



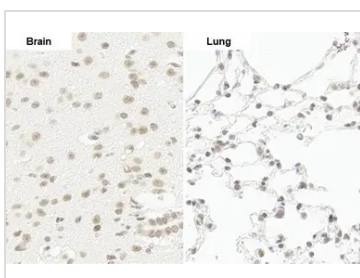
GTX635977 IHC-P Image

RPB2 antibody [HL1043] detects RPB2 protein by immunohistochemical analysis.

Sample: Paraffin-embedded rat lung.

RPB2 stained by RPB2 antibody [HL1043] (GTX635977) diluted at 1:100.

Antigen Retrieval: Citrate buffer, pH 6.0, 15 min



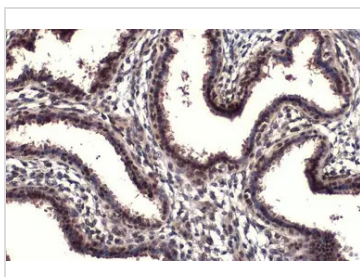
GTX635977 IHC-P Image

RPB2 antibody [HL1043] detects RPB2 protein by immunohistochemical analysis.

Sample: Paraffin-embedded mouse tissue.

RPB2 stained by RPB2 antibody [HL1043] (GTX635977) diluted at 1:100.

Antigen Retrieval: Citrate buffer, pH 6.0, 15 min



GTX635977 IHC-P Image

RPB2 antibody [HL1043] detects RPB2 protein at nucleus by immunohistochemical analysis.

Sample: Paraffin-embedded human breast carcinoma.

RPB2 stained by RPB2 antibody [HL1043] (GTX635977) diluted at 1:100.

Antigen Retrieval: Citrate buffer, pH 6.0, 15 min



For full product information, images and publications, please visit our [website](https://www.genetex.com).