

## Androgen Receptor antibody [HL1049]

Cat. No. GTX636021

Host	Rabbit
Clonality	Monoclonal
Isotype	IgG
Applications	WB, ICC/IF, IHC-P
Reactivity	Human, Rat

Package  
100 µl, 25 µl

## Applications

## Application Note

\*Optimal dilutions/concentrations should be determined by the researcher.

Suggested dilution	Recommended dilution
WB	1:500-1:3000
ICC/IF	Assay dependent
IHC-P	Assay dependent

Not tested in other applications.

**Observed MW (kDa)** 90 (ARv7 Splice Variant), 125 (Androgen Receptor) kDa.

## Properties

Form	Liquid
Buffer	PBS
Preservative	No preservative
Storage	Store as concentrated solution. Centrifuge briefly prior to opening vial. For short-term storage (1-2 weeks), store at 4°C. For long-term storage, aliquot and store at -20°C or below. Avoid multiple freeze-thaw cycles.
Concentration	1 mg/ml (Please refer to the vial label for the specific concentration.)
Immunogen	Carrier-protein conjugated synthetic peptide encompassing a sequence within the N-terminus region of human Androgen Receptor. The exact sequence is proprietary.
Purification	Affinity purified by Protein A.
Conjugation	Unconjugated

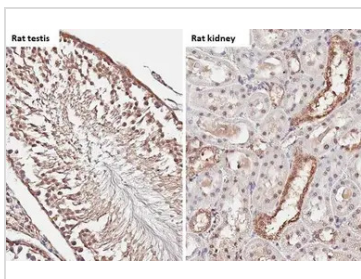
## Note

For laboratory research use only. Not for any clinical, therapeutic, or diagnostic use in humans or animals. Not for animal or human consumption.

Purchasers shall not, and agree not to enable third parties to, analyze, copy, reverse engineer or otherwise attempt to determine the structure or sequence of the product.



For full product information, images and publications, please visit our [website](#).

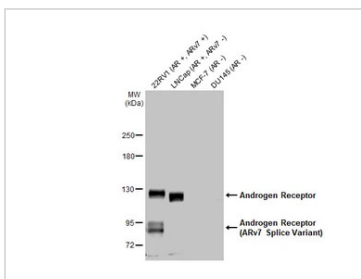
**DATA IMAGES**

**GTX636021 IHC-P Image**

Androgen Receptor antibody [HL1049] detects Androgen Receptor protein by immunohistochemical analysis.

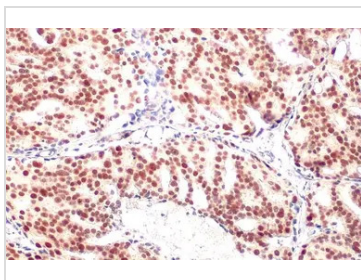
Sample: Paraffin-embedded rat tissues.

Androgen Receptor stained by Androgen Receptor antibody [HL1049] (GTX636021) diluted at 1:100.

Antigen Retrieval: Citrate buffer, pH 6.0, 15 min


**GTX636021 WB Image**

Various whole cell extracts (30 µg) were separated by 5% SDS-PAGE, and the membrane was blotted with Androgen Receptor antibody [HL1049] (GTX636021) diluted at 1:5000. The HRP-conjugated anti-rabbit IgG antibody (GTX213110-01) was used to detect the primary antibody.

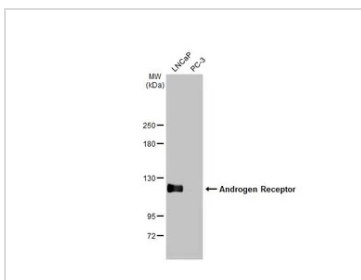

**GTX636021 IHC-P Image**

Androgen Receptor antibody [HL1049] detects Androgen Receptor protein at nucleus by immunohistochemical analysis.

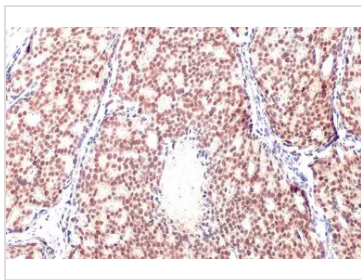
Sample: Paraffin-embedded human prostate cancer.

Androgen Receptor stained by Androgen Receptor antibody [HL1049] (GTX636021) diluted at 1:500.

Antigen Retrieval: Citrate buffer, pH 6.0, 15 min


**GTX636021 WB Image**

Various whole cell extracts (30 µg) were separated by 5% SDS-PAGE, and the membrane was blotted with Androgen Receptor antibody [HL1049] (GTX636021) diluted at 1:1000. The HRP-conjugated anti-rabbit IgG antibody (GTX213110-01) was used to detect the primary antibody.


**GTX636021 IHC-P Image**

Androgen Receptor antibody [HL1049] detects Androgen Receptor protein at nucleus by immunohistochemical analysis.

Sample: Paraffin-embedded human prostate cancer.

Androgen Receptor stained by Androgen Receptor antibody [HL1049] (GTX636021) diluted at 1:500.

Antigen Retrieval: Citrate buffer, pH 6.0, 15 min



For full product information, images and publications, please visit our [website](https://www.genetex.com).