

Hepatitis D virus Large delta protein antibody [HL1051]

Cat. No. GTX636026

Host	Rabbit
Clonality	Monoclonal
Isotype	IgG
Applications	WB, ICC/IF
Reactivity	Hepatitis D virus

Package
100 µl, 25 µl

Applications

Application Note

*Optimal dilutions/concentrations should be determined by the researcher.

Suggested dilution	Recommended dilution
WB	Assay dependent
ICC/IF	Assay dependent

Not tested in other applications.

Properties

Form	Liquid
Buffer	PBS
Preservative	No preservatives
Storage	Store as concentrated solution. Centrifuge briefly prior to opening vial. For short-term storage (1-2 weeks), store at 4°C. For long-term storage, aliquot and store at -20°C or below. Avoid multiple freeze-thaw cycles.
Concentration	1 mg/ml (Please refer to the vial label for the specific concentration.)
Immunogen	Carrier-protein conjugated synthetic peptide encompassing a sequence within the C-terminus region of Hepatitis D virus Large delta protein (Hepatitis delta virus genotype I (isolate D380)). The exact sequence is proprietary.
Purification	Affinity purified by Protein A.
Conjugation	Unconjugated

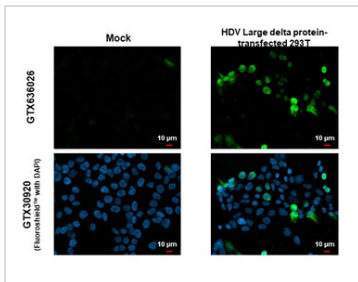
Note

For laboratory research use only. Not for any clinical, therapeutic, or diagnostic use in humans or animals. Not for animal or human consumption.

Purchasers shall not, and agree not to enable third parties to, analyze, copy, reverse engineer or otherwise attempt to determine the structure or sequence of the product.



For full product information, images and publications, please visit our [website](#).

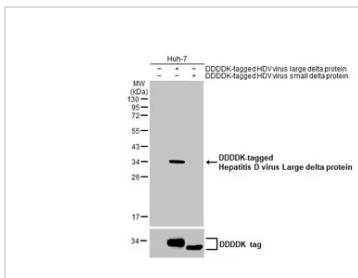
DATA IMAGES

GTx636026 ICC/IF Image

Hepatitis D virus Large delta protein antibody [HL1051] detects Hepatitis D virus Large delta protein protein by immunofluorescent analysis.

Sample: Mock and transfected 293T cells were fixed in 4% paraformaldehyde at RT for 15 min.

Green: Hepatitis D virus Large delta protein stained by Hepatitis D virus Large delta protein antibody [HL1051] (GTx636026) diluted at 1:500.

Blue: Fluoroshield with DAPI (GTx30920).


GTx636026 WB Image

Non-transfected (–) and transfected (+) Huh-7 whole cell extracts (30 μg) were separated by 12% SDS-

PAGE, and the membrane was blotted with Hepatitis D virus Large delta protein antibody [HL1051]

(GTx636026) diluted at 1:5000. The HRP-conjugated anti-rabbit IgG antibody (GTx213110-01) was used to detect the primary antibody.



For full product information, images and publications, please visit our [website](https://www.genetex.com).