

# Hepatitis D virus Large delta + Small delta protein antibody [HL1055]

**Cat. No. GTX636030**

|                     |                   |
|---------------------|-------------------|
| <b>Host</b>         | Rabbit            |
| <b>Clonality</b>    | Monoclonal        |
| <b>Isotype</b>      | IgG               |
| <b>Applications</b> | WB, ICC/IF        |
| <b>Reactivity</b>   | Hepatitis D virus |

**Package**  
100 µl, 25 µl

## Applications

### Application Note

\*Optimal dilutions/concentrations should be determined by the researcher.

| Suggested dilution | Recommended dilution |
|--------------------|----------------------|
| WB                 | Assay dependent      |
| ICC/IF             | Assay dependent      |

Not tested in other applications.

## Properties

|                      |  |
|----------------------|--|
| <b>Form</b>          | Liquid   |
| <b>Buffer</b>        | PBS  |
| <b>Preservative</b>  | No preservatives   |
| <b>Storage</b>       | Store as concentrated solution. Centrifuge briefly prior to opening vial. For short-term storage (1-2 weeks), store at 4°C. For long-term storage, aliquot and store at -20°C or below. Avoid multiple freeze-thaw cycles. |
| <b>Concentration</b> | 1 mg/ml (Please refer to the vial label for the specific concentration.)   |
| <b>Immunogen</b>     | Full length Hepatitis D virus Large delta + Small delta recombinant protein. (Hepatitis delta virus genotype I (isolate D380))   |
| <b>Purification</b>  | Affinity purified by Protein A.  |
| <b>Conjugation</b>   | Unconjugated   |

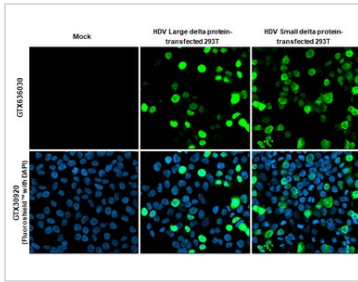
### Note

For laboratory research use only. Not for any clinical, therapeutic, or diagnostic use in humans or animals. Not for animal or human consumption.

Purchasers shall not, and agree not to enable third parties to, analyze, copy, reverse engineer or otherwise attempt to determine the structure or sequence of the product.



For full product information, images and publications, please visit our [website](#).

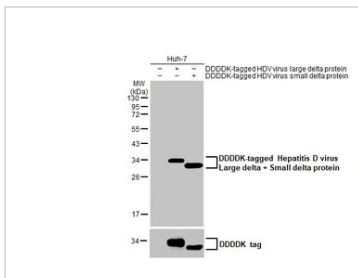
**DATA IMAGES**

**GTX636030 ICC/IF Image**

Hepatitis D virus Large delta + Small delta protein antibody [HL1055] detects Hepatitis D virus Large delta + Small delta protein protein by immunofluorescent analysis.

Sample: Mock and transfected 293T cells were fixed in 4% paraformaldehyde at RT for 15 min.

Green: Hepatitis D virus Large delta + Small delta protein stained by Hepatitis D virus Large delta + Small delta protein antibody [HL1055] (GTX636030) diluted at 1:500.

Blue: Fluoroshield with DAPI (GTX30920).


**GTX636030 WB Image**

Non-transfected (-) and transfected (+) Huh-7 whole cell extracts (30 µg) were separated by 12% SDS-

PAGE, and the membrane was blotted with Hepatitis D virus Large data + Small delta protein antibody

[HL1055] (GTX636030) diluted at 1:5000. The HRP-conjugated anti-rabbit IgG antibody (GTX213110-01) was used to detect the primary antibody.



For full product information, images and publications, please visit our [website](https://www.genetex.com).