

PD-L1 antibody [HL1056]

Cat. No. GTX636033

Host	Rabbit
Clonality	Monoclonal
Isotype	IgG
Applications	WB, ICC/IF
Reactivity	Human

References (1)
 Package
 100 µl, 25 µl

Applications

Application Note

*Optimal dilutions/concentrations should be determined by the researcher.

Suggested dilution	Recommended dilution
WB	1:500-1:3000
ICC/IF	Assay dependent

Not tested in other applications.

Observed MW (kDa) 33 (deglycosylated form), 45-60 (glycosylated form) kDa.

Product Note This antibody was raised against human PD-L1 Intracellular domain, and it does not cross react with human PDL2 protein.

Properties

Form	Liquid
Buffer	PBS
Preservative	No preservatives
Storage	Store as concentrated solution. Centrifuge briefly prior to opening vial. For short-term storage (1-2 weeks), store at 4°C. For long-term storage, aliquot and store at -20°C or below. Avoid multiple freeze-thaw cycles.
Concentration	1 mg/ml (Please refer to the vial label for the specific concentration.)
Immunogen	Synthetic peptide encompassing a sequence within the Intracellular domain of human PD-L1. The exact sequence is proprietary.
Purification	Affinity purified by Protein A.
Conjugation	Unconjugated

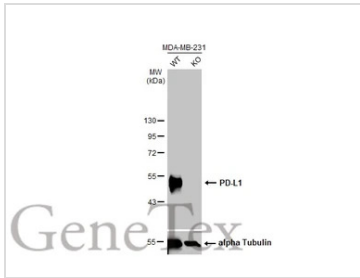
Note

For laboratory research use only. Not for any clinical, therapeutic, or diagnostic use in humans or animals. Not for animal or human consumption.

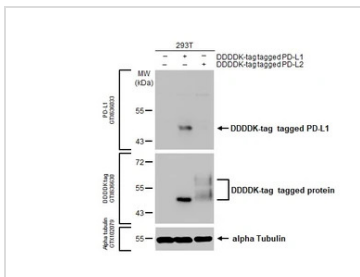
Purchasers shall not, and agree not to enable third parties to, analyze, copy, reverse engineer or otherwise attempt to determine the structure or sequence of the product.



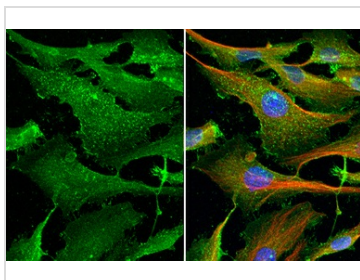
For full product information, images and publications, please visit our [website](#).

DATA IMAGES

GTX636033 WB Image

Wild-type (WT) and PD-L1 knockout (KO) MDA-MB-231 cell extracts (30 µg) were separated by 10% SDS-PAGE, and the membrane was blotted with PD-L1 antibody [HL1056] (GTX636033) diluted at 1:2000. The HRP-conjugated anti-rabbit IgG antibody (GTX213110-01) was used to detect the primary antibody.


GTX636033 WB Image

Non-transfected (-) and transfected (+) 293T whole cell extracts (30 µg) were separated by 10% SDS-PAGE, and the membrane was blotted with PD-L1 antibody [HL1056] (GTX636033) diluted at 1:2000. The HRP-conjugated anti-rabbit IgG antibody (GTX213110-01) was used to detect the primary antibody.


GTX636033 ICC/IF Image

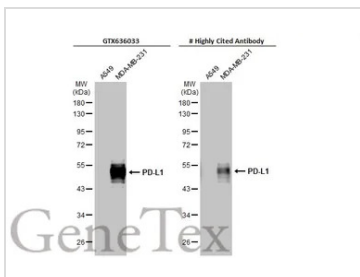
PD-L1 antibody [HL1056] detects PD-L1 protein by immunofluorescent analysis.

Sample: MDA-MB-231 cells were fixed in ice-cold MeOH for 10 min.

Green: PD-L1 stained by PD-L1 antibody [HL1056] (GTX636033) diluted at 1:200.

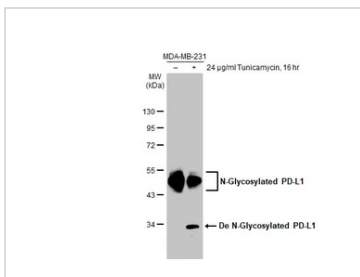
Red: alpha Tubulin, a cytoskeleton marker, stained by alpha Tubulin antibody [GT114] (GTX628802) diluted at 1:1000.

Blue: Fluoroshield with DAPI (GTX30920).


GTX636033 WB Image

Various whole cell extracts (30 µg) were separated by 10% SDS-PAGE, and the membranes were blotted with PD-L1 antibody [HL1056] (GTX636033) diluted at 1:1000 and competitor's antibody diluted at 1:200. The HRP-conjugated anti-rabbit IgG antibody (GTX213110-01) was used to detect the primary antibody.

*The competitor is not affiliated with GeneTex and does not endorse this product.


GTX636033 WB Image

Untreated (-) and treated (+) MDA-MB-231 whole cell extract (30 µg) were separated by 10% SDS-PAGE, and the membrane was blotted with PD-L1 antibody [HL1056] (GTX636033) diluted at 1:5000. The HRP-conjugated anti-rabbit IgG antibody (GTX213110-01) was used to detect the primary antibody.



For full product information, images and publications, please visit our [website](https://www.genetex.com).