

SDHA antibody [HL1067]

Cat. No. GTX636098

Host	Rabbit
Clonality	Monoclonal
Isotype	IgG
Applications	WB, ICC/IF
Reactivity	Human, Mouse, Rat, Zebrafish, Drosophila

References (1)

Package

100 µl, 25 µl

Applications

Application Note

*Optimal dilutions/concentrations should be determined by the researcher.

Suggested dilution	Recommended dilution
WB	1:500-1:3000
ICC/IF	Assay dependent

Not tested in other applications.

Observed MW (kDa) 73 kDa.

Properties

Form	Liquid
Buffer	PBS
Preservative	No preservative
Storage	Store as concentrated solution. Centrifuge briefly prior to opening vial. For short-term storage (1-2 weeks), store at 4°C. For long-term storage, aliquot and store at -20°C or below. Avoid multiple freeze-thaw cycles.
Concentration	1 mg/ml (Please refer to the vial label for the specific concentration.)
Immunogen	Recombinant protein encompassing a sequence within the center region of human SDHA. The exact sequence is proprietary.
Purification	Affinity purified by Protein A.
Conjugation	Unconjugated

Note

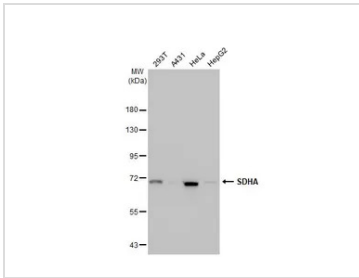
For laboratory research use only. Not for any clinical, therapeutic, or diagnostic use in humans or animals. Not for animal or human consumption.

Purchasers shall not, and agree not to enable third parties to, analyze, copy, reverse engineer or otherwise attempt to determine the structure or sequence of the product.



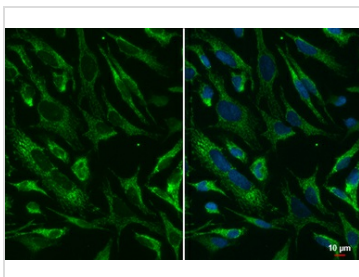
For full product information, images and publications, please visit our [website](#).

DATA IMAGES



GTX636098 WB Image

Various whole cell extracts (30 µg) were separated by 7.5% SDS-PAGE, and the membrane was blotted with SDHA antibody [HL1067] (GTX636098) diluted at 1:500. The HRP-conjugated anti-rabbit IgG antibody (GTX213110-01) was used to detect the primary antibody.



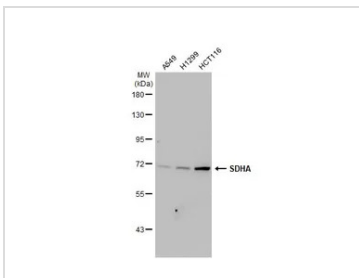
GTX636098 ICC/IF Image

SDHA antibody [HL1067] detects SDHA protein at mitochondria by immunofluorescent analysis.

Sample: HeLa cells were fixed in 4% paraformaldehyde at RT for 15 min.

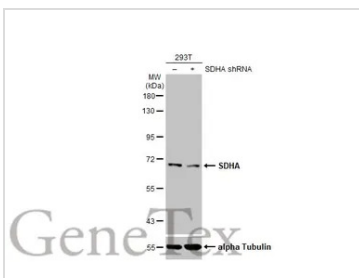
Green: SDHA stained by SDHA antibody [HL1067] (GTX636098) diluted at 1:500.

Blue: Fluoroshield with DAPI (GTX30920).



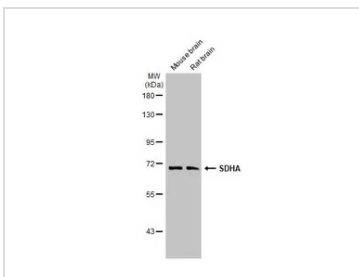
GTX636098 WB Image

Various whole cell extracts (50 µg) were separated by 7.5% SDS-PAGE, and the membrane was blotted with SDHA antibody [HL1067] (GTX636098) diluted at 1:1000. The HRP-conjugated anti-rabbit IgG antibody (GTX213110-01) was used to detect the primary antibody, and the signal was developed with Trident ECL plus-Enhanced.



GTX636098 WB Image

Non-transfected (–) and transfected (+) 293T whole cell extracts (30 µg) were separated by 7.5% SDS-PAGE, and the membrane was blotted with SDHA antibody [HL1067] (GTX636098) diluted at 1:1000. The HRP-conjugated anti-rabbit IgG antibody (GTX213110-01) was used to detect the primary antibody.



GTX636098 WB Image

Various tissue extracts (50 µg) were separated by 7.5% SDS-PAGE, and the membrane was blotted with SDHA antibody [HL1067] (GTX636098) diluted at 1:1000. The HRP-conjugated anti-rabbit IgG antibody (GTX213110-01) was used to detect the primary antibody.



For full product information, images and publications, please visit our [website](https://www.genetex.com).