

## ROCK2 (phospho Ser1366) antibody [HL1071]

## Cat. No. GTX636103

<b>Host</b>	Rabbit
<b>Clonality</b>	Monoclonal
<b>Isotype</b>	IgG
<b>Applications</b>	WB, ICC/IF
<b>Reactivity</b>	Human, Mouse

References ( 2 )

Package

100 µl, 25 µl

## Applications

## Application Note

\*Optimal dilutions/concentrations should be determined by the researcher.

Suggested dilution	Recommended dilution
WB	1:500-1:3000
ICC/IF	Assay dependent

Not tested in other applications.

**Observed MW (kDa)** 161 kDa.

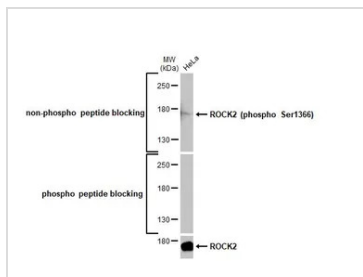
## Properties

<b>Form</b>	Liquid
<b>Buffer</b>	PBS
<b>Preservative</b>	No preservatives
<b>Storage</b>	Store as concentrated solution. Centrifuge briefly prior to opening vial. For short-term storage (1-2 weeks), store at 4°C. For long-term storage, aliquot and store at -20°C or below. Avoid multiple freeze-thaw cycles.
<b>Concentration</b>	1 mg/ml (Please refer to the vial label for the specific concentration.)
<b>Immunogen</b>	Carrier-protein conjugated synthetic peptide surrounding phospho Ser1366 of human ROCK2. The exact sequence is proprietary.
<b>Purification</b>	Affinity purified by Protein A.
<b>Conjugation</b>	Unconjugated
<b>Note</b>	For laboratory research use only. Not for any clinical, therapeutic, or diagnostic use in humans or animals. Not for animal or human consumption.  Purchasers shall not, and agree not to enable third parties to, analyze, copy, reverse engineer or otherwise attempt to determine the structure or sequence of the product.



For full product information, images and publications, please visit our [website](#).

DATA IMAGES

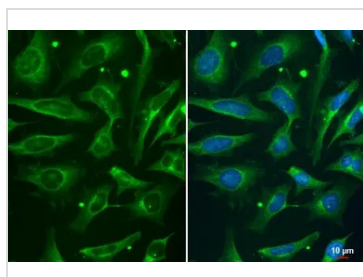


**GTX636103 WB Image**

Whole cell extract (30 µg) was separated by 5% SDS-PAGE, and the membrane was blotted with primary antibodies diluted at 1:1000. The HRP-conjugated anti-rabbit IgG antibody was used to detect the primary antibody, and the signal was developed with Trident ECL plus-Enhanced.

**Upper :** ROCK2 (phospho Ser1366) antibody [HL1071] (GTX636103)

**Lower :** ROCK2 antibody (GTX102619)

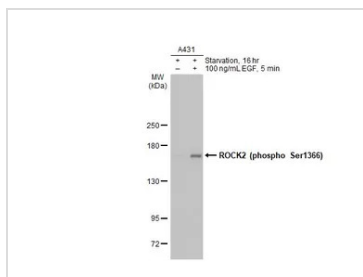


**GTX636103 ICC/IF Image**

ROCK2 (phospho Ser1366) antibody detects ROCK2 (phospho Ser1366) protein at cytoplasm by immunofluorescent analysis.

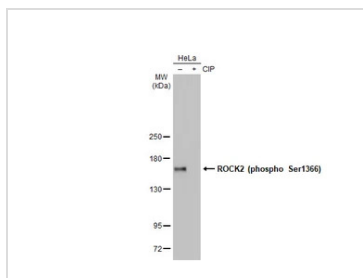
Sample: HeLa cells were fixed in ice-cold MeOH for 5 min.

Green: ROCK2 (phospho Ser1366) stained by ROCK2 (phospho Ser1366) antibody (GTX636103) diluted at 1:500.



**GTX636103 WB Image**

Untreated (-) and treated (+) A431 whole cell extracts (30 µg) were separated by 5% SDS-PAGE, and the membrane was blotted with ROCK2 (phospho Ser1366) antibody [HL1071] (GTX636103) diluted at 1:1000. The HRP-conjugated anti-rabbit IgG antibody (GTX213110-01) was used to detect the primary antibody.



**GTX636103 WB Image**

Untreated (-) and treated (+) HeLa whole cell extracts (30 µg) were separated by 5% SDS-PAGE, and the membrane was blotted with ROCK2 (phospho Ser1366) antibody [HL1071] (GTX636103) diluted at 1:1000. The HRP-conjugated anti-rabbit IgG antibody (GTX213110-01) was used to detect the primary antibody. (CIP: Calf-intestinal alkaline phosphatase)



For full product information, images and publications, please visit our [website](#).