

OLIG2 antibody [HL1072]

Cat. No. GTX636104

Host	Rabbit
Clonality	Monoclonal
Isotype	IgG
Applications	ICC/IF, IHC-P, IHC-Fr
Reactivity	Mouse, Rat

References (2)

Package

100 µl, 25 µl

Applications

Application Note

*Optimal dilutions/concentrations should be determined by the researcher.

Suggested dilution	Recommended dilution
ICC/IF	1:100-1:1000
IHC-P	1:100-1:1000
IHC-Fr	Assay dependent

Not tested in other applications.

Properties

Form	Liquid
Buffer	PBS
Preservative	No preservatives
Storage	Store as concentrated solution. Centrifuge briefly prior to opening vial. For short-term storage (1-2 weeks), store at 4°C. For long-term storage, aliquot and store at -20°C or below. Avoid multiple freeze-thaw cycles.
Concentration	1 mg/ml (Please refer to the vial label for the specific concentration.)
Immunogen	Recombinant protein encompassing a sequence within the N-terminus region of human OLIG2. The exact sequence is proprietary.
Purification	Affinity purified by Protein A.
Conjugation	Unconjugated

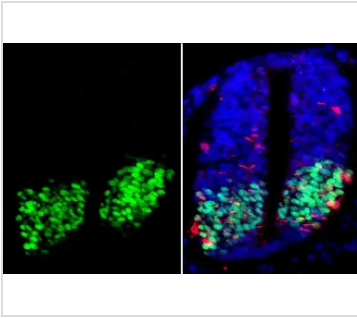
Note

For laboratory research use only. Not for any clinical, therapeutic, or diagnostic use in humans or animals. Not for animal or human consumption.

Purchasers shall not, and agree not to enable third parties to, analyze, copy, reverse engineer or otherwise attempt to determine the structure or sequence of the product.



For full product information, images and publications, please visit our [website](#).

DATA IMAGES

GTX636104 IHC-P Image

OLIG2 antibody [HL1072] detects OLIG2 protein at nucleus by immunohistochemical analysis.

Sample: Paraffin-embedded mouse E10.5 embryo.

Green: OLIG2 stained by OLIG2 antibody [HL1072] (GTX636104) diluted at 1:200.

Red: beta Tubulin 3/ Tuj1, a neural marker, stained by beta Tubulin 3/ Tuj1 antibody [GT11710] (GTX631836) diluted at 1:.

Blue: Fluoroshield with DAPI (GTX30920).

Antigen Retrieval: Citrate buffer, pH 6.0, 15 min

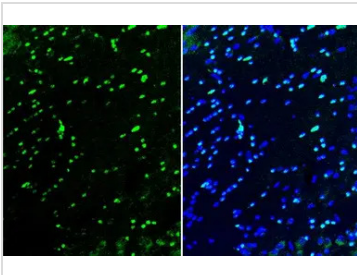

GTX636104 IHC-P Image

OLIG2 antibody [HL1072] detects OLIG2 protein at nucleus by immunohistochemical analysis.

Sample: Paraffin-embedded mouse brain.

OLIG2 stained by OLIG2 antibody [HL1072] (GTX636104) diluted at 1:100.

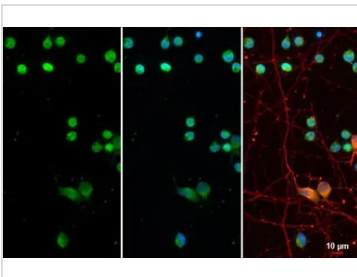
Antigen Retrieval: Citrate buffer, pH 6.0, 15 min


GTX636104 IHC-Fr Image

OLIG2 antibody [HL1072] detects OLIG2 protein at nucleus by immunohistochemical analysis. Sample: Frozen-sectioned mouse brain.

Green: OLIG2 stained by OLIG2 antibody [HL1072] (GTX636104) diluted at 1:100.

Blue: Fluoroshield with DAPI (GTX30920).


GTX636104 ICC/IF Image

Olig2 antibody detects Olig2 protein at oligodendrocyte by immunofluorescent analysis.

Sample: DIV10 rat cortical neuron and glia cells were fixed in 4% paraformaldehyde at RT for 15 min.

Green: Olig2 stained by Olig2 antibody (GTX636104) diluted at 1:500.

Red: Tau, a marker, stained by Tau antibody [GT287] (GTX634809) diluted at 1:500.



For full product information, images and publications, please visit our [website](https://www.genetex.com).