

# Influenza A virus Nucleoprotein antibody [HL1089]

**Cat. No. GTX636247**

<b>Host</b>	Rabbit
<b>Clonality</b>	Monoclonal
<b>Isotype</b>	IgG
<b>Application</b>	WB, ICC/IF, ELISA, Lateral Flow, Sandwich ELISA, IHC-P (cell pellet)
<b>Reactivity</b>	Influenza A virus

Reference ( 3 )

★★★★★ Review ( 2 )

Package

100 µl, 25 µl

## APPLICATION

### Application Note

\*Optimal dilutions/concentrations should be determined by the researcher.

Suggested dilution	Recommended dilution
WB	Assay dependent
ICC/IF	Assay dependent
ELISA	Assay dependent
Lateral Flow	Assay dependent
Sandwich ELISA	Assay dependent
IHC-P (cell pellet)	Assay dependent

**Note : Capture : GTX637790, Detection : GTX636247 or Capture : GTX636247 / GTX636318, Detection : GTX636199 or Capture : GTX636247 / GTX636199, Detection : GTX636318. Please notice that GTX636247 needs to be conjugated to Gold to function as the detection antibody when paired with GTX637790. Please contact us for custom Gold-conjugated antibody.**

**Capture : GTX636318 / GTX636247, Detection : GTX636247 / GTX636318. Please notice that GTX636247 needs to be conjugated to HRP to function as the detection antibody when paired with GTX636318 / GTX637790. Please contact us for custom HRP-conjugated antibody.**

Not tested in other applications.

### Product Note

This antibody is specific for Influenza A virus Nucleoprotein protein (H1N1, H3N2, H5N8, and H10N3), and it does not cross-react with Influenza B virus Nucleoprotein protein.

## PROPERTIES

<b>Form</b>	Liquid
<b>Buffer</b>	PBS
<b>Preservative</b>	No preservative
<b>Storage</b>	Store as concentrated solution. Centrifuge briefly prior to opening vial. For short-term storage (1-2 weeks), store at 4°C. For long-term storage, aliquot and store at -20°C or below. Avoid multiple freeze-thaw cycles.
<b>Concentration</b>	1 mg/ml (Please refer to the vial label for the specific concentration.)



For full product information, images and publications, please visit our [website](#).

Date 2024 / 04 / 25 Page 1 of 2

**Immunogen**

Recombinant protein encompassing a sequence within the center region of Influenza A virus Nucleoprotein (A/Kansas/14/2017(H3N2)). The exact sequence is proprietary.

**Purification**

Affinity purified by Protein A.

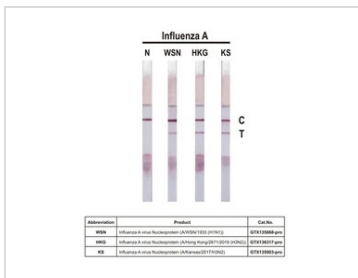
**Conjugation**

Unconjugated

**Note**

For laboratory research use only. Not for any clinical, therapeutic, or diagnostic use in humans or animals. Not for animal or human consumption.

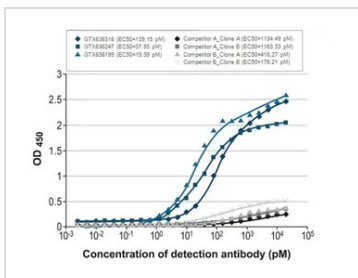
Purchasers shall not, and agree not to enable third parties to, analyze, copy, reverse engineer or otherwise attempt to determine the structure or sequence of the product.

**DATA IMAGES**

**GTX636247 Lateral Flow Image**

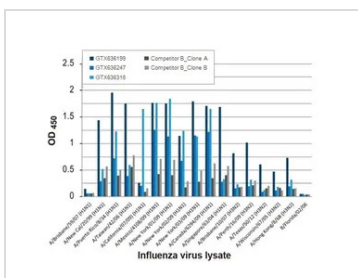
Detection of recombinant influenza A virus nucleoproteins of the indicated strains by lateral flow assay using the recombinant rabbit monoclonal antibody pair.

**Capture:** Influenza A virus Nucleoprotein antibody [HL1089] (GTX636247)

**Detection:** Influenza A virus Nucleoprotein antibody [HL1103] (GTX636318)


**GTX636247 ELISA Image**

Indirect ELISA analysis was performed by coating a plate with recombinant influenza A virus nucleoprotein (A/Kansas/2017/H3N2), DDDDK Tag (GTX135903-pro) (50 ng), and probing with the specified influenza A virus nucleoprotein antibodies at the indicated concentrations. Goat anti-rabbit IgG antibody (HRP) (GTX213110-01) (1:10000) or goat anti-mouse IgG antibody (HRP) (GTX213111-01) (1:10000) were used to detect the bound primary antibodies.


**GTX636247 ELISA Image**

Indirect ELISA analysis was performed by coating a plate with viral lysates (1 µg) derived from different strains of influenza A virus or influenza B virus and probing with the specified influenza A virus nucleoprotein antibodies (1 µg/ml). Goat anti-rabbit IgG antibody (HRP) (GTX213110-01) (1:10000) or goat anti-mouse IgG antibody (HRP) (GTX213111-01) (1:10000) were used to detect the bound primary antibodies.



For full product information, images and publications, please visit our [website](https://www.genetex.com).