

ACE2 antibody [HL1092]

Cat. No. GTX636265

Host	Rabbit
Clonality	Monoclonal
Isotype	IgG
Applications	WB, ICC/IF, IHC-P
Reactivity	Human, Cat, Dog, African green monkey

Package
100 µl, 25 µl

Applications

Application Note

*Optimal dilutions/concentrations should be determined by the researcher.

Suggested dilution	Recommended dilution
WB	Assay dependent
ICC/IF	Assay dependent
IHC-P	Assay dependent

Not tested in other applications.

Observed MW (kDa) 120-130 kDa.

Product Note This antibody was raised against human ACE2 Extracellular domain. We do not recommend use of this product for Mouse samples.

Properties

Form	Liquid
Buffer	PBS
Preservative	No preservatives
Storage	Store as concentrated solution. Centrifuge briefly prior to opening vial. For short-term storage (1-2 weeks), store at 4°C. For long-term storage, aliquot and store at -20°C or below. Avoid multiple freeze-thaw cycles.
Concentration	1 mg/ml (Please refer to the vial label for the specific concentration.)
Immunogen	Recombinant protein encompassing a sequence within the Extracellular domain of human ACE2. The exact sequence is proprietary.
Purification	Affinity purified by Protein A.
Conjugation	Unconjugated



For full product information, images and publications, please visit our [website](#).

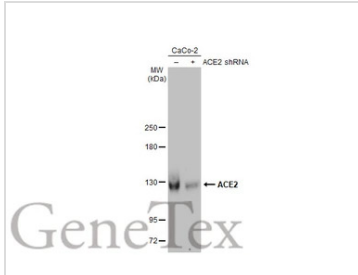
Date 2025 / 09 / 03 Page 1 of 2

For laboratory research use only. Not for any clinical, therapeutic, or diagnostic use in humans or animals. Not for animal or human consumption.

Note

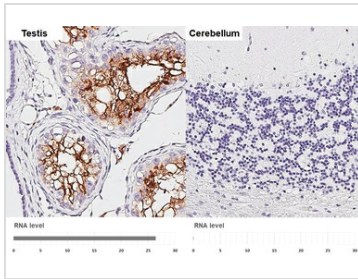
Purchasers shall not, and agree not to enable third parties to, analyze, copy, reverse engineer or otherwise attempt to determine the structure or sequence of the product.

DATA IMAGES



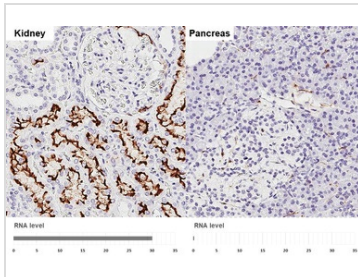
GTX636265 WB Image

Non-transfected (–) and transfected (+) 293T whole cell extracts (50 µg) were separated by 5% SDS-PAGE, and the membrane was blotted with ACE2 antibody [HL1092] (GTX636265) diluted at 1:1000. The HRP-conjugated anti-rabbit IgG antibody (GTX213110-01) was used to detect the primary antibody, and the signal was developed with Trident ECL plus-Enhanced.



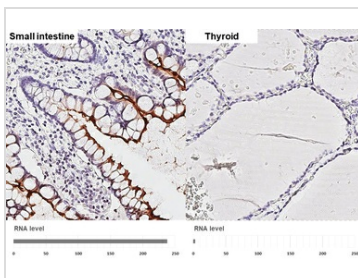
GTX636265 IHC-P Image

ACE2 antibody [HL1092] detects ACE2 protein by immunohistochemical analysis.
Sample: Paraffin-embedded human tissues.
ACE2 stained by ACE2 antibody [HL1092] (GTX636265) diluted at 1:10000.
Antigen Retrieval: Tris-EDTA buffer, pH 9.0, 15 min
Corresponding RNA levels (RPKM) in the tissues are based on NCBI database.



GTX636265 IHC-P Image

ACE2 antibody [HL1092] detects ACE2 protein by immunohistochemical analysis.
Sample: Paraffin-embedded human tissues.
ACE2 stained by ACE2 antibody [HL1092] (GTX636265) diluted at 1:10000.
Antigen Retrieval: Tris-EDTA buffer, pH 9.0, 15 min
Corresponding RNA levels (RPKM) in the tissues are based on NCBI database.



GTX636265 IHC-P Image

ACE2 antibody [HL1092] detects ACE2 protein by immunohistochemical analysis.
Sample: Paraffin-embedded human tissues.
ACE2 stained by ACE2 antibody [HL1092] (GTX636265) diluted at 1:10000.
Antigen Retrieval: Tris-EDTA buffer, pH 9.0, 15 min
Corresponding RNA levels (nTPM) in the tissues are based on Human Protein Atlas program.



For full product information, images and publications, please visit our [website](https://www.genetex.com).