

Influenza A virus Nucleoprotein antibody [HL1098]

Cat. No. GTX636282

Host	Rabbit
Clonality	Monoclonal
Isotype	IgG
Applications	WB, ICC/IF, ELISA, Sandwich ELISA
Reactivity	Influenza A virus

Package

100 µl, 25 µl

Applications

Application Note

*Optimal dilutions/concentrations should be determined by the researcher.

Suggested dilution	Recommended dilution
WB	1:1000-1:10000
ICC/IF	1:100-1:1000
ELISA	Assay dependent
Sandwich ELISA	Assay dependent

Note : Capture : GTX636282, Detection : GTX636318 / GTX629633.

Please notice that the detected antibody needs to be conjugated to HRP to function as the detection antibody when paired with the capture antibody.

Please contact us for custom HRP-conjugated antibody.

Not tested in other applications.

Product Note

This antibody is specific for Influenza A virus Nucleoprotein protein (H1N1 and H3N2), and it does not cross-react with Influenza B virus Nucleoprotein protein.

Properties

Form	Liquid
Buffer	PBS
Preservative	No preservatives
Storage	Store as concentrated solution. Centrifuge briefly prior to opening vial. For short-term storage (1-2 weeks), store at 4°C. For long-term storage, aliquot and store at -20°C or below. Avoid multiple freeze-thaw cycles.
Concentration	1 mg/ml (Please refer to the vial label for the specific concentration.)
Immunogen	Recombinant protein encompassing a sequence within the C-terminus region of Influenza A virus H1N1pdm09 Nucleoprotein (A/California/7/2009). The exact sequence is proprietary.
Purification	Affinity purified by Protein A.



For full product information, images and publications, please visit our [website](#).

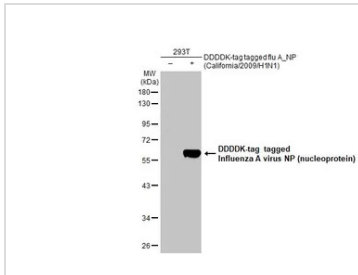
Conjugation

Unconjugated

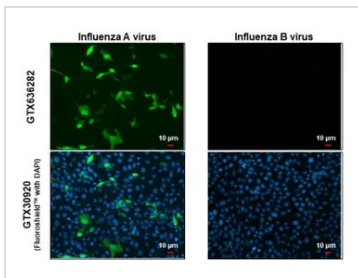
For laboratory research use only. Not for any clinical, therapeutic, or diagnostic use in humans or animals. Not for animal or human consumption.

Note

Purchasers shall not, and agree not to enable third parties to, analyze, copy, reverse engineer or otherwise attempt to determine the structure or sequence of the product.

DATA IMAGES

GTx636282 WB Image

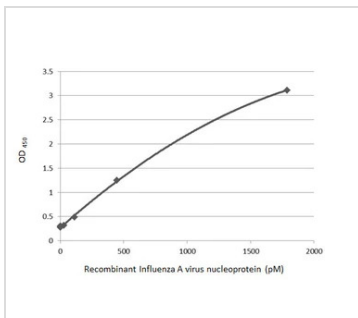
Non-transfected (–) and transfected (+) 293T whole cell extracts (30 µg) were separated by 10% SDS-PAGE, and the membrane was blotted with Influenza A virus NP (nucleoprotein) antibody [HL1098] (GTx636282) diluted at 1:5000. The HRP-conjugated anti-rabbit IgG antibody (GTx213110-01) was used to detect the primary antibody.


GTx636282 ICC/IF Image

Immunofluorescent analysis of influenza virus infected cells using Influenza A virus Nucleoprotein antibody (GTx636282).

Sample: Influenza A and B Virus infected cells slide.

Green: Influenza A virus Nucleoprotein antibody (GTx636282) diluted at 1:100.

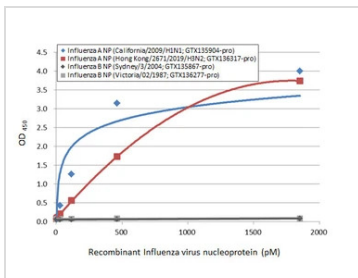

GTx636282 ELISA Image

Sandwich ELISA detection of recombinant Influenza A virus Nucleoprotein protein (A/California/2009 (H1N1)), DDDDK Tag (GTx135904-pro) using antibodies as below.

Capture: Influenza A virus Nucleoprotein antibody [HL1098] (GTx636282) (5 µg/mL)

Detection: HRP-conjugated Influenza A virus Nucleoprotein antibody [HL1103] (GTx636318) (1 µg/mL)

Please notice that GTx636318 needs to be conjugated to HRP to function as the detection antibody when paired with GTx636282. Please contact us for custom HRP-conjugated antibody.


GTx636282 ELISA Image

Sandwich ELISA detection of recombinant nucleoproteins (NP) derived from different strains of Influenza A virus (i.e., A/California/2009 (H1N1); A/Hong Kong/2671/2019 (H3N2)) and Influenza B virus (i.e., B/Sydney/3/2004; B/Victoria/02/1987) using antibodies as below.

Capture: Influenza A virus Nucleoprotein antibody [GT23] (GTx641086) (5 µg/mL)

Detection: HRP-conjugated Influenza A virus Nucleoprotein antibody [HL1098] (GTx636282) (1 µg/mL)



For full product information, images and publications, please visit our [website](https://www.genetex.com).