

Somatostatin antibody [HL1101]

Cat. No. GTX636297

| | |
|--------------------|---------------------------|
| Host | Rabbit |
| Clonality | Monoclonal |
| Isotype | IgG |
| Application | WB, ICC/IF, IHC-P, IHC-Fr |
| Reactivity | Mouse, Rat, Cat, Dog |

Package
100 µl, 25 µl

APPLICATION

Application Note

*Optimal dilutions/concentrations should be determined by the researcher.

| Suggested dilution | Recommended dilution |
|--------------------|----------------------|
| WB | 1:500-1:3000 |
| ICC/IF | Assay dependent |
| IHC-P | Assay dependent |
| IHC-Fr | Assay dependent |

Not tested in other applications.

Calculated MW 13 kDa. ([Note](#))

PROPERTIES

| | |
|----------------------|--|
| Form | Liquid |
| Buffer | PBS |
| Preservative | No preservative |
| Storage | Store as concentrated solution. Centrifuge briefly prior to opening vial. For short-term storage (1-2 weeks), store at 4°C. For long-term storage, aliquot and store at -20°C or below. Avoid multiple freeze-thaw cycles. |
| Concentration | 1 mg/ml (Please refer to the vial label for the specific concentration.) |
| Immunogen | Carrier-protein conjugated synthetic peptide encompassing a sequence within the center region of mouse Somatostatin. The exact sequence is proprietary. |
| Purification | Affinity purified by Protein A. |
| Conjugation | Unconjugated |

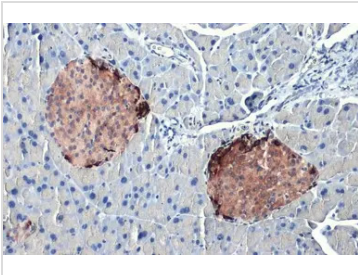


For full product information, images and publications, please visit our [website](#).

For laboratory research use only. Not for any clinical, therapeutic, or diagnostic use in humans or animals. Not for animal or human consumption.

Note

Purchasers shall not, and agree not to enable third parties to, analyze, copy, reverse engineer or otherwise attempt to determine the structure or sequence of the product.

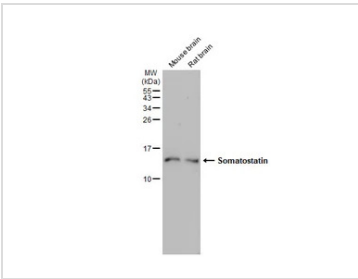
DATA IMAGES

GTX636297 IHC-P Image

Somatostatin antibody [HL1101] detects secreted Somatostatin protein by immunohistochemical analysis.

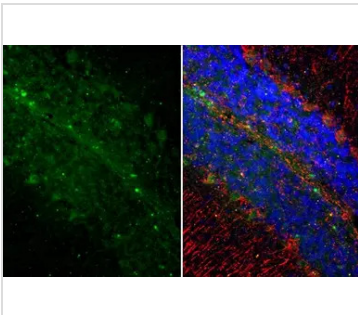
Sample: Paraffin-embedded mouse pancreas.

Somatostatin stained by Somatostatin antibody [HL1101] (GTX636297) diluted at 1:1000.

Antigen Retrieval: Citrate buffer, pH 6.0, 15 min


GTX636297 WB Image

Various tissue extracts (50 µg) were separated by 15% SDS-PAGE, and the membrane was blotted with Somatostatin antibody [HL1101] (GTX636297) diluted at 1:5000. The HRP-conjugated anti-rabbit IgG antibody (GTX213110-01) was used to detect the primary antibody.


GTX636297 IHC-P Image

Somatostatin antibody [HL1101] detects Somatostatin protein at cytoplasm by immunohistochemical analysis.

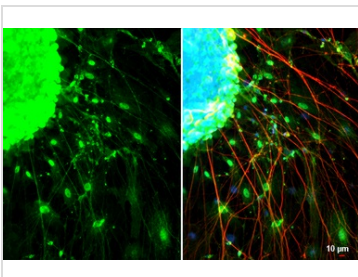
Sample: Paraffin-embedded mouse brain.

Green: Somatostatin stained by Somatostatin antibody [HL1101] (GTX636297) diluted at 1:250.

Red: NF-H, a neural marker, stained by NF-H antibody [GT114] (GTX634289) diluted at 1:250.

Blue: Fluoroshield with DAPI (GTX30920).

Antigen Retrieval: Citrate buffer, pH 6.0, 15 min


GTX636297 ICC/IF Image

Somatostatin antibody [HL1101] detects Somatostatin protein at cytoplasmic vesicles and nucleus by immunofluorescent analysis.

Sample: mouse dorsal root ganglia cells were fixed in 4% paraformaldehyde at RT for 15 min.

Green: Somatostatin stained by Somatostatin antibody [HL1101] (GTX636297) diluted at 1:500.

Red: NF-H, a axon marker, stained by NF-H antibody [GT114] (GTX634289) diluted at 1:500.

Blue: Fluoroshield with DAPI (GTX30920).



For full product information, images and publications, please visit our [website](https://www.genetex.com).