

RBPMS antibody [HL1105]

Cat. No. GTX636320

Host	Rabbit
Clonality	Monoclonal
Isotype	IgG
Applications	WB, IHC-P
Reactivity	Human, Mouse, Rat

Package
100 µl, 25 µl

Applications

Application Note

*Optimal dilutions/concentrations should be determined by the researcher.

Suggested dilution	Recommended dilution
WB	1:500-1:3000
IHC-P	Assay dependent

Not tested in other applications.

Observed MW (kDa) 26, 32 kDa.

Properties

Form	Liquid
Buffer	PBS
Preservative	No preservative
Storage	Store as concentrated solution. Centrifuge briefly prior to opening vial. For short-term storage (1-2 weeks), store at 4°C. For long-term storage, aliquot and store at -20°C or below. Avoid multiple freeze-thaw cycles.
Concentration	1 mg/ml (Please refer to the vial label for the specific concentration.)
Immunogen	Recombinant protein encompassing a sequence within the center region of human RBPMS. The exact sequence is proprietary.
Purification	Affinity purified by Protein A.
Conjugation	Unconjugated

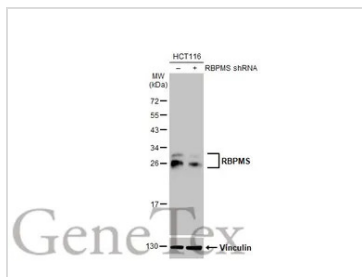
Note

For laboratory research use only. Not for any clinical, therapeutic, or diagnostic use in humans or animals. Not for animal or human consumption.

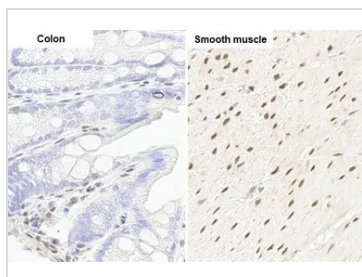
Purchasers shall not, and agree not to enable third parties to, analyze, copy, reverse engineer or otherwise attempt to determine the structure or sequence of the product.



For full product information, images and publications, please visit our [website](#).

DATA IMAGES

GTX636320 WB Image

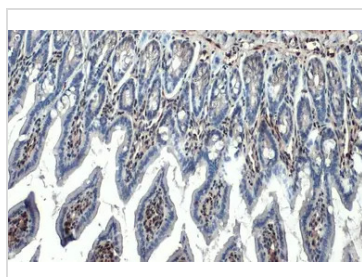
Non-transfected (–) and transfected (+) HCT116 whole cell extracts (60 µg) were separated by 12% SDS-PAGE, and the membrane was blotted with RBPMS antibody [HL1105] (GTX636320) diluted at 1:10000. The HRP-conjugated anti-rabbit IgG antibody (GTX213110-01) was used to detect the primary antibody, and the signal was developed with Trident ECL plus-Enhanced.


GTX636320 IHC-P Image

RBPMS antibody [HL1105] detects RBPMS protein by immunohistochemical analysis. Sample: Paraffin-embedded mouse tissues.

RBPMS stained by RBPMS antibody [HL1105] (GTX636320) diluted at 1:100.

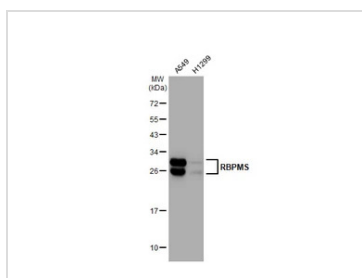
Antigen Retrieval: Citrate buffer, pH 6.0, 15 min


GTX636320 IHC-P Image

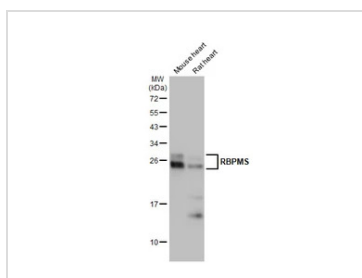
RBPMS antibody [HL1105] detects RBPMS protein at nucleus by immunohistochemical analysis. Sample: Paraffin-embedded mouse intestine.

RBPMS stained by RBPMS antibody [HL1105] (GTX636320) diluted at 1:100.

Antigen Retrieval: Citrate buffer, pH 6.0, 15 min


GTX636320 WB Image

Various whole cell extracts (30 µg) were separated by 12% SDS-PAGE, and the membrane was blotted with RBPMS antibody [HL1105] (GTX636320) diluted at 1:1000. The HRP-conjugated anti-rabbit IgG antibody (GTX213110-01) was used to detect the primary antibody.


GTX636320 WB Image

Various tissue extracts (50 µg) were separated by 12% SDS-PAGE, and the membrane was blotted with RBPMS antibody [HL1105] (GTX636320) diluted at 1:1000. The HRP-conjugated anti-rabbit IgG antibody (GTX213110-01) was used to detect the primary antibody.



For full product information, images and publications, please visit our [website](http://www.genetex.com).