

Influenza A virus H1N1 NA (Neuraminidase) antibody [HL1108]

Cat. No. GTX636323

Host	Rabbit
Clonality	Monoclonal
Isotype	IgG
Applications	WB, ICC/IF
Reactivity	Influenza A virus (H1N1)

References (2)

Package

100 µl, 25 µl

Applications

Application Note

*Optimal dilutions/concentrations should be determined by the researcher.

Suggested dilution	Recommended dilution
WB	1:500-1:3000
ICC/IF	Assay dependent

Not tested in other applications.

Product Note

This antibody recognizes Influenza A H1N1 NA (Neuraminidase) protein, and it does not cross react with Influenza A H3N2 and Influenza B NA (Neuraminidase) protein.

Properties

Form	Liquid
Buffer	PBS
Preservative	No preservatives
Storage	Store as concentrated solution. Centrifuge briefly prior to opening vial. For short-term storage (1-2 weeks), store at 4°C. For long-term storage, aliquot and store at -20°C or below. Avoid multiple freeze-thaw cycles.
Concentration	1 mg/ml (Please refer to the vial label for the specific concentration.)
Immunogen	Recombinant protein encompassing a sequence within the center region of Influenza A virus H1N1 NA (Neuraminidase) (Influenza A virus (A/WSN/1933(H1N1))). The exact sequence is proprietary.
Purification	Affinity purified by Protein A.
Conjugation	Unconjugated

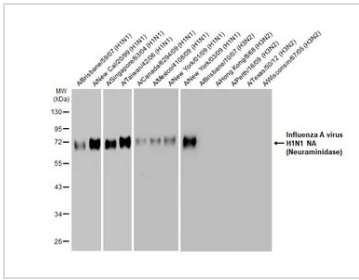
Note

For laboratory research use only. Not for any clinical, therapeutic, or diagnostic use in humans or animals. Not for animal or human consumption.

Purchasers shall not, and agree not to enable third parties to, analyze, copy, reverse engineer or otherwise attempt to determine the structure or sequence of the product.

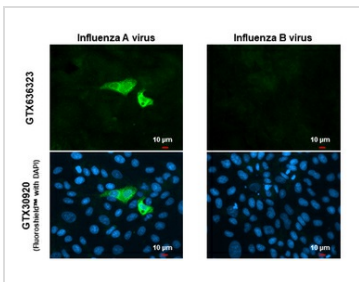
For full product information, images and publications, please visit our [website](#).

DATA IMAGES



GTX636323 WB Image

Influenza A viral lysate (1 µg) were separated by 10% SDS-PAGE, and the membrane was blotted with Influenza A virus H1N1 NA (Neuraminidase) antibody [HL1108] (GTX636323) diluted at 1:1000. The HRP-conjugated anti-rabbit IgG antibody (GTX213110-01) was used to detect the primary antibody.



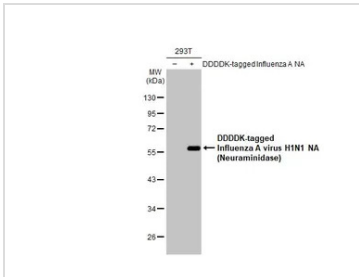
GTX636323 ICC/IF Image

Influenza A virus H1N1 NA (Neuraminidase) antibody [HL1108] detects Influenza A virus H1N1 NA (Neuraminidase) protein by immunofluorescent analysis.

Sample: Influenza A and B Virus infected cells slide cells were fixed in Influenza Kit.

Green: Influenza A virus H1N1 NA (Neuraminidase) stained by Influenza A virus H1N1 NA (Neuraminidase) antibody [HL1108] (GTX636323) diluted at 1:100.

Blue: Fluoroshield with DAPI (GTX30920).



GTX636323 WB Image

Non-transfected (-) and transfected (+) 293T whole cell extracts (30 µg) were separated by 10% SDS-PAGE, and the membrane was blotted with Influenza A virus H1N1 NA (Neuraminidase) antibody [HL1108] (GTX636323) diluted at 1:5000. The HRP-conjugated anti-rabbit IgG antibody (GTX213110-01) was used to detect the primary antibody.



For full product information, images and publications, please visit our [website](http://www.genetex.com).