

BrdU antibody [HL1111]

Cat. No. GTX636326

Host	Rabbit
Clonality	Monoclonal
Isotype	IgG
Applications	ICC/IF, IHC-P
Reactivity	Species independent

Package
100 µl, 25 µl

Applications

Application Note

*Optimal dilutions/concentrations should be determined by the researcher.

Suggested dilution	Recommended dilution
ICC/IF	1:100-1:2000
IHC-P	Assay dependent

Not tested in other applications.

Properties

Form	Liquid
Buffer	PBS
Preservative	No preservative
Storage	Store as concentrated solution. Centrifuge briefly prior to opening vial. For short-term storage (1-2 weeks), store at 4°C. For long-term storage, aliquot and store at -20°C or below. Avoid multiple freeze-thaw cycles.
Concentration	1 mg/ml (Please refer to the vial label for the specific concentration.)
Immunogen	The immunogen used to generate this antibody corresponds to BrdU.
Purification	Affinity purified by Protein A.
Conjugation	Unconjugated

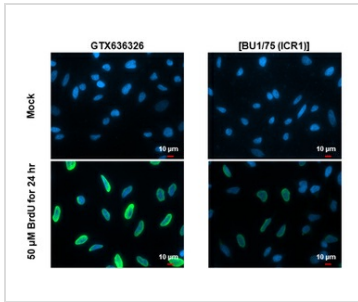
Note

For laboratory research use only. Not for any clinical, therapeutic, or diagnostic use in humans or animals. Not for animal or human consumption.

Purchasers shall not, and agree not to enable third parties to, analyze, copy, reverse engineer or otherwise attempt to determine the structure or sequence of the product.



For full product information, images and publications, please visit our [website](#).

DATA IMAGES

GTx636326 ICC/IF Image

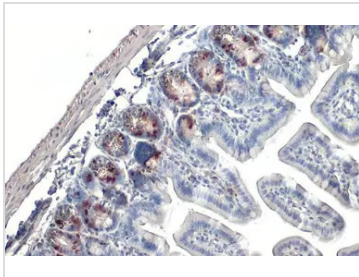
BrdU antibody [HL1111] detects BrdU protein at nucleus by immunofluorescent analysis.

Sample: Mock and treated HeLa cells were fixed in 4% paraformaldehyde at RT for 15 min.

Green: BrdU stained by BrdU antibody [HL1111] (GTx636326) diluted at 1:2000 and competitor's antibody ([BU1/75 (ICR1)]) diluted at 1:2000.

Blue: Fluoroshield with DAPI (GTx30920).

*Competitor's antibody is not affiliated with GeneTex and does not endorse this product.

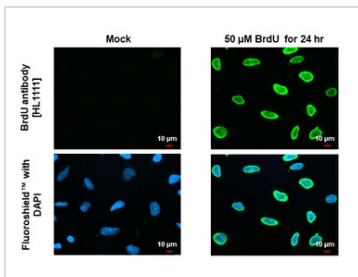

GTx636326 IHC-P Image

BrdU antibody [HL1111] detects Bromodeoxyuridine(BrdU) at nucleus in mouse BrdU treated intestine by immunohistochemical analysis.

Sample: Paraffin-embedded mouse intestinal tissue pulsed with BrdU.

BrdU stained by BrdU antibody [HL1111] (GTx636326) diluted at 1:100.

Antigen Retrieval: Citrate buffer, pH 6.0, 15 min


GTx636326 ICC/IF Image

BrdU antibody [HL1111] detects BrdU protein at nucleus by immunofluorescent analysis.

Sample: Mock and treated HeLa cells were fixed in 4% paraformaldehyde at RT for 15 min.

Green: BrdU stained by BrdU antibody [HL1111] (GTx636326) diluted at 1:2000.

Blue: Fluoroshield with DAPI (GTx30920).



For full product information, images and publications, please visit our [website](https://www.genetex.com).