

## Thrombospondin 2 antibody [HL1140]

Cat. No. GTX636411

|              |                                   |
|--------------|-----------------------------------|
| Host         | Rabbit                            |
| Clonality    | Monoclonal                        |
| Isotype      | IgG                               |
| Applications | WB, ICC/IF, ELISA, Sandwich ELISA |
| Reactivity   | Human                             |

Package  
100 µl, 25 µl

## Applications

## Application Note

\*Optimal dilutions/concentrations should be determined by the researcher.

| Suggested dilution | Recommended dilution |
|--------------------|----------------------|
| WB                 | Assay dependent      |
| ICC/IF             | Assay dependent      |
| ELISA              | Assay dependent      |
| Sandwich ELISA     | Assay dependent      |

**Note : Capture : GTX636506, Detection : GTX636411 or Capture : GTX636411, Detection : GTX636506. Please notice that the detected antibody needs to be conjugated to HRP when paired with the capture antibody. Please contact us for custom HRP-conjugated antibody.**

Not tested in other applications.

**Observed MW (kDa)** 200 kDa.

## Properties

|               |  |
|---------------|--|
| Form          | Liquid   |
| Buffer        | PBS  |
| Preservative  | No preservative  |
| Storage       | Store as concentrated solution. Centrifuge briefly prior to opening vial. For short-term storage (1-2 weeks), store at 4°C. For long-term storage, aliquot and store at -20°C or below. Avoid multiple freeze-thaw cycles. |
| Concentration | 1 mg/ml (Please refer to the vial label for the specific concentration.)   |
| Immunogen     | Recombinant protein encompassing a sequence within the center region of human Thrombospondin 2. The exact sequence is proprietary.   |
| Purification  | Affinity purified by Protein A.  |
| Conjugation   | Unconjugated   |



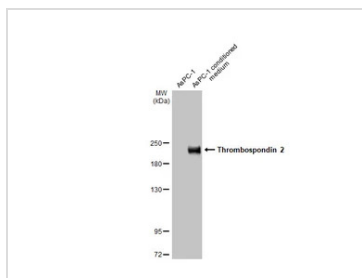
For full product information, images and publications, please visit our [website](#).

Date 2025 / 05 / 28 Page 1 of 2

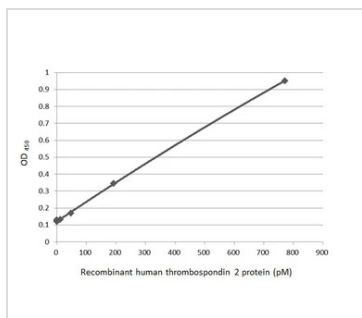
For laboratory research use only. Not for any clinical, therapeutic, or diagnostic use in humans or animals. Not for animal or human consumption.

**Note**

Purchasers shall not, and agree not to enable third parties to, analyze, copy, reverse engineer or otherwise attempt to determine the structure or sequence of the product.

**DATA IMAGES**

**GTX636411 WB Image**

AsPC-1 whole cell extract and conditioned medium (30 µg) were separated by 5% SDS-PAGE, and the membrane was blotted with Thrombospondin 2 antibody [HL1140] (GTX636411) diluted at 1:10000. The HRP-conjugated anti-rabbit IgG antibody (GTX213110-01) was used to detect the primary antibody.

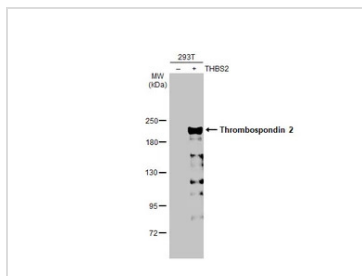

**GTX636411 ELISA Image**

Sandwich ELISA detection of recombinant recombinant HEK293 expressed, full-length human thrombospondin 2 protein using antibodies as below.

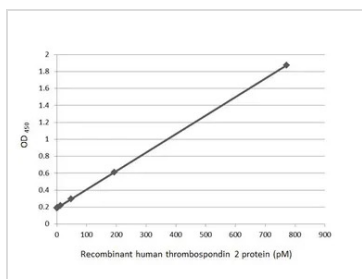
**Capture:** Thrombospondin 2 antibody [HL1140] (GTX636411) (5 µg/mL)

**Detection:** HRP-conjugated Thrombospondin 2 antibody [HL1194] (GTX636506) (1 µg/mL)

Please notice that GTX636506 needs to be conjugated to HRP to function as the detection antibody when paired with GTX636411. Please contact us for custom HRP-conjugated antibody.


**GTX636411 WB Image**

Non-transfected (–) and transfected (+) 293T whole cell extracts (30 µg) were separated by 5% SDS-PAGE, and the membrane was blotted with Thrombospondin 2 antibody [HL1140] (GTX636411) diluted at 1:300000. The HRP-conjugated anti-rabbit IgG antibody (GTX213110-01) was used to detect the primary antibody.


**GTX636411 ELISA Image**

Sandwich ELISA detection of recombinant human thrombospondin 2 protein using antibodies as below.

**Capture:** Thrombospondin 2 antibody [HL1194] (GTX636506) (5 µg/mL)

**Detection:** HRP-conjugated Thrombospondin 2 antibody [HL1140] (GTX636411) (1 µg/mL)

Please notice that GTX636411 needs to be conjugated to HRP to function as the detection antibody when paired with GTX636506. Please contact us for custom HRP-conjugated antibody.



For full product information, images and publications, please visit our [website](https://www.genetex.com).