

## Glucocorticoid Receptor antibody [HL1149]

Cat. No. GTX636420

<b>Host</b>	Rabbit
<b>Clonality</b>	Monoclonal
<b>Isotype</b>	IgG
<b>Applications</b>	WB, ICC/IF, IHC-P
<b>Reactivity</b>	Human, Mouse

**Package**  
100 µl, 25 µl

## Applications

**Application Note**

\*Optimal dilutions/concentrations should be determined by the researcher.

Suggested dilution	Recommended dilution
WB	1:500-1:3000
ICC/IF	Assay dependent
IHC-P	Assay dependent

Not tested in other applications.

**Observed MW (kDa)** 100 kDa.

## Properties

<b>Form</b>	Liquid
<b>Buffer</b>	PBS
<b>Preservative</b>	No preservatives
<b>Storage</b>	Store as concentrated solution. Centrifuge briefly prior to opening vial. For short-term storage (1-2 weeks), store at 4°C. For long-term storage, aliquot and store at -20°C or below. Avoid multiple freeze-thaw cycles.
<b>Concentration</b>	1 mg/ml (Please refer to the vial label for the specific concentration.)
<b>Immunogen</b>	Recombinant protein encompassing a sequence within the center region of human Glucocorticoid Receptor. The exact sequence is proprietary.
<b>Purification</b>	Affinity purified by Protein A.
<b>Conjugation</b>	Unconjugated

**Note**

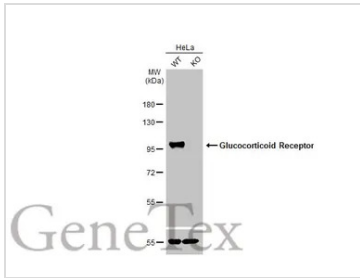
For laboratory research use only. Not for any clinical, therapeutic, or diagnostic use in humans or animals. Not for animal or human consumption.

Purchasers shall not, and agree not to enable third parties to, analyze, copy, reverse engineer or otherwise attempt to determine the structure or sequence of the product.

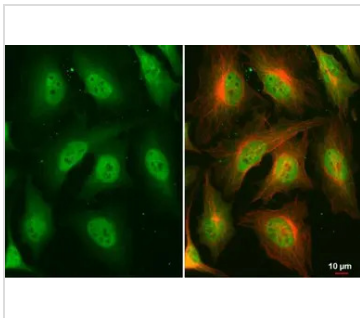


For full product information, images and publications, please visit our [website](#).

## DATA IMAGES

**GTX636420 WB Image**

Wild-type (WT) and NR3C1 knockout (KO) HeLa cell extracts (30  $\mu$ g) were separated by 7.5% SDS-PAGE, and the membrane was blotted with Glucocorticoid Receptor antibody [HL1149] (GTX636420) diluted at 1:1000. The HRP-conjugated anti-rabbit IgG antibody (GTX213110-01) was used to detect the primary antibody.

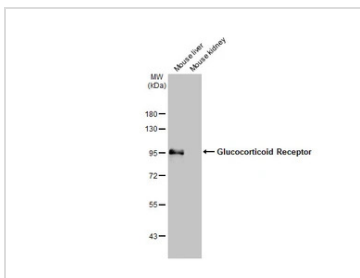
**GTX636420 ICC/IF Image**

Glucocorticoid Receptor antibody [HL1149] detects Glucocorticoid Receptor protein at cytoplasm and nucleus by immunofluorescent analysis.

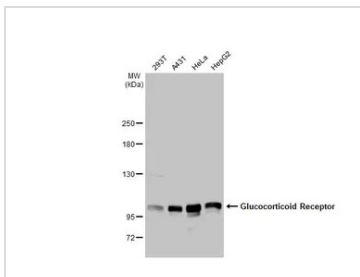
Sample: HeLa cells were fixed in 4% paraformaldehyde at RT for 15 min.

Green: Glucocorticoid Receptor stained by Glucocorticoid Receptor antibody [HL1149] (GTX636420) diluted at 1:500.

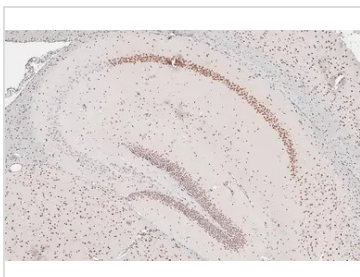
Red: alpha Tubulin, a cytoskeleton marker, stained by alpha Tubulin antibody [GT114] (GTX628802) diluted at 1:1000.

**GTX636420 WB Image**

Various tissue extracts (50  $\mu$ g) were separated by 7.5% SDS-PAGE, and the membrane was blotted with Glucocorticoid Receptor antibody [HL1149] (GTX636420) diluted at 1:1000. The HRP-conjugated anti-rabbit IgG antibody (GTX213110-01) was used to detect the primary antibody.

**GTX636420 WB Image**

Various whole cell extracts (30  $\mu$ g) were separated by 5% SDS-PAGE, and the membrane was blotted with Glucocorticoid Receptor antibody [HL1149] (GTX636420) diluted at 1:1000. The HRP-conjugated anti-rabbit IgG antibody (GTX213110-01) was used to detect the primary antibody.

**GTX636420 IHC-P Image**

Glucocorticoid Receptor antibody [HL1149] detects Glucocorticoid Receptor protein by immunohistochemical analysis.

Sample: Paraffin-embedded mouse hippocampus.

Glucocorticoid Receptor stained by Glucocorticoid Receptor antibody [HL1149] (GTX636420) diluted at 1:600.

Antigen Retrieval: Citrate buffer, pH 6.0, 15 min



For full product information, images and publications, please visit our [website](https://www.genetex.com).