

C-Peptide antibody [HL1159]

Cat. No. GTX636463

Host	Rabbit
Clonality	Monoclonal
Isotype	IgG
Applications	IHC-P, IHC-Fr, ELISA
Reactivity	Human, Mouse, Rat

Package
100 µl, 25 µl

Applications

Application Note

*Optimal dilutions/concentrations should be determined by the researcher.

Suggested dilution	Recommended dilution
IHC-P	1:100-1:10000
IHC-Fr	Assay dependent
ELISA	Assay dependent

Not tested in other applications.

Properties

Form	Liquid
Buffer	PBS
Preservative	No preservatives
Storage	Store as concentrated solution. Centrifuge briefly prior to opening vial. For short-term storage (1-2 weeks), store at 4°C. For long-term storage, aliquot and store at -20°C or below. Avoid multiple freeze-thaw cycles.
Concentration	1 mg/ml (Please refer to the vial label for the specific concentration.)
Immunogen	Synthetic peptide corresponding to human c-peptide.
Purification	Affinity purified by Protein A.
Conjugation	Unconjugated

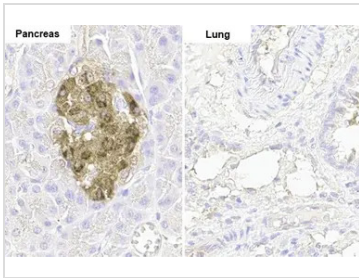
Note

For laboratory research use only. Not for any clinical, therapeutic, or diagnostic use in humans or animals. Not for animal or human consumption.

Purchasers shall not, and agree not to enable third parties to, analyze, copy, reverse engineer or otherwise attempt to determine the structure or sequence of the product.



For full product information, images and publications, please visit our [website](#).

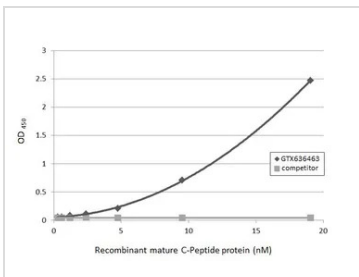
DATA IMAGES

GTX636463 IHC-P Image

C-Peptide antibody [HL1159] detects C-Peptide protein by immunohistochemical analysis.

Sample: Paraffin-embedded rat tissues.

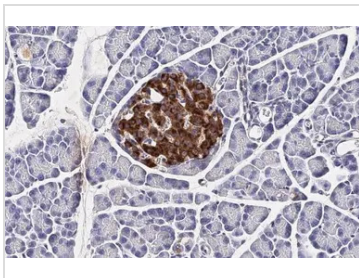
C-Peptide stained by C-Peptide antibody [HL1159] (GTX636463) diluted at 1:100.

Antigen Retrieval: Citrate buffer, pH 6.0, 15 min


GTX636463 ELISA Image

Indirect ELISA analysis was performed by coating the plate with recombinant mature C-Peptide protein (19.05-0.3 nM). Coated protein was probed with C-Peptide antibody [HL1159] (GTX636463) (1 µg/mL).

Goat anti-rabbit IgG antibody (HRP) (GTX213110-01) (1:10000) was used to detect the bound primary antibody.

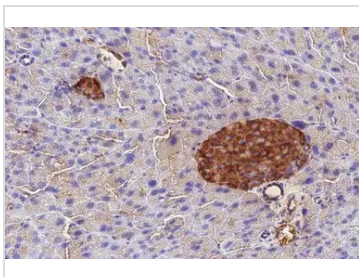

GTX636463 IHC-P Image

C-Peptide antibody [HL1159] detects secreted C-Peptide protein by immunohistochemical analysis.

Sample: Paraffin-embedded rat pancreas.

C-Peptide stained by C-Peptide antibody [HL1159] (GTX636463) diluted at 1:100.

Antigen Retrieval: Citrate buffer, pH 6.0, 15 min

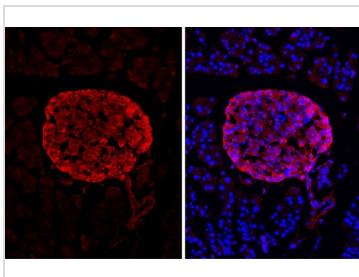

GTX636463 IHC-P Image

C-Peptide antibody [HL1159] detects secreted C-Peptide protein by immunohistochemical analysis.

Sample: Paraffin-embedded mouse pancreas.

C-Peptide stained by C-Peptide antibody [HL1159] (GTX636463) diluted at 1:100.

Antigen Retrieval: Citrate buffer, pH 6.0, 15 min


GTX636463 IHC-Fr Image

C-Peptide antibody [HL1159] detects C-Peptide protein by immunohistochemical analysis.

Sample: Frozen-sectioned mouse pancreas.

Green: C-Peptide stained by C-Peptide antibody [HL1159] (GTX636463) diluted at 1:500.

Blue: Fluoroshield with DAPI (GTX30920).



For full product information, images and publications, please visit our [website](https://www.genetex.com).