

Cytokeratin 19 antibody [HL1165]

Cat. No. GTX636469

Host	Rabbit
Clonality	Monoclonal
Isotype	IgG
Applications	WB, ICC/IF, IHC-P
Reactivity	Human, Mouse, Rat

Package
100 µl, 25 µl

Applications

Application Note

*Optimal dilutions/concentrations should be determined by the researcher.

Suggested dilution	Recommended dilution
WB	1:500-1:3000
ICC/IF	Assay dependent
IHC-P	1:100-1:1000

Not tested in other applications.

Observed MW (kDa) 44 kDa.

Properties

Form	Liquid
Buffer	PBS
Preservative	No preservatives
Storage	Store as concentrated solution. Centrifuge briefly prior to opening vial. For short-term storage (1-2 weeks), store at 4°C. For long-term storage, aliquot and store at -20°C or below. Avoid multiple freeze-thaw cycles.
Concentration	1 mg/ml (Please refer to the vial label for the specific concentration.)
Immunogen	Carrier-protein conjugated synthetic peptide encompassing a sequence within the C-terminus region of human Cytokeratin 19. The exact sequence is proprietary.
Purification	Affinity purified by Protein A.
Conjugation	Unconjugated

Note

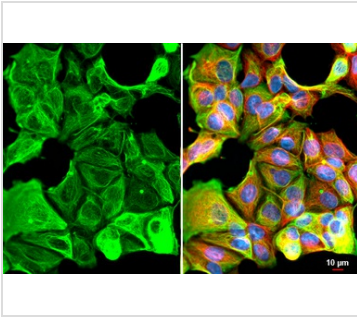
For laboratory research use only. Not for any clinical, therapeutic, or diagnostic use in humans or animals. Not for animal or human consumption.

Purchasers shall not, and agree not to enable third parties to, analyze, copy, reverse engineer or otherwise attempt to determine the structure or sequence of the product.



For full product information, images and publications, please visit our [website](#).

DATA IMAGES

**GTX636469 ICC/IF Image**

Cytokeratin 19 antibody [HL1165] detects Cytokeratin 19 protein by immunofluorescent analysis.

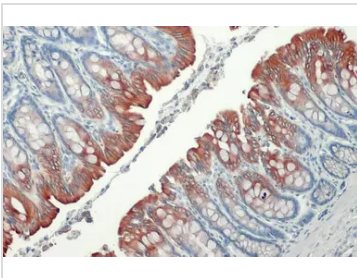
Sample: MCF-7 cells were fixed in ice-cold MeOH for 10 min.

Green: Cytokeratin 19 stained by Cytokeratin 19 antibody [HL1165] (GTX636469) diluted at 1:500.

Red: alpha Tubulin, a cytoskeleton marker, stained by alpha Tubulin antibody [GT114] (GTX628802) diluted at 1:1000.

Blue: Fluoroshield with DAPI (GTX30920).

Scale bar= 10µm.

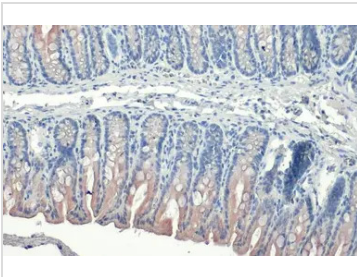
**GTX636469 IHC-P Image**

Cytokeratin 19 antibody [HL1165] detects Cytokeratin 19 protein at cell membrane and cytoplasm by immunohistochemical analysis.

Sample: Paraffin-embedded rat colon.

Cytokeratin 19 stained by Cytokeratin 19 antibody [HL1165] (GTX636469) diluted at 1:100.

Antigen Retrieval: Citrate buffer, pH 6.0, 15 min

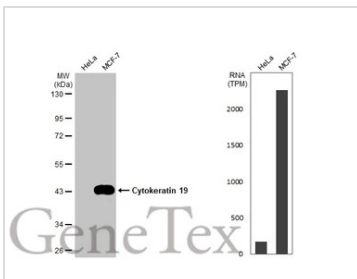
**GTX636469 IHC-P Image**

Cytokeratin 19 antibody [HL1165] detects Cytokeratin 19 protein at cytoplasm by immunohistochemical analysis.

Sample: Paraffin-embedded mouse colon.

Cytokeratin 19 stained by Cytokeratin 19 antibody [HL1165] (GTX636469) diluted at 1:100.

Antigen Retrieval: Citrate buffer, pH 6.0, 15 min

**GTX636469 WB Image**

Various whole cell extracts (30 µg) were separated by 10% SDS-PAGE, and the membrane was blotted with Cytokeratin 19 antibody [HL1165] (GTX636469) diluted at 1:1000. The HRP-conjugated anti-rabbit IgG antibody (GTX213110-01) was used to detect the primary antibody. Corresponding RNA expression data for the same cell lines are based on Human Protein Atlas program.



For full product information, images and publications, please visit our [website](https://www.genetex.com).