

GAD65 + GAD67 antibody [HL1181]

Cat. No. GTX636487

Host	Rabbit
Clonality	Monoclonal
Isotype	IgG
Applications	WB, ICC/IF, IHC-P
Reactivity	Human, Mouse, Rat, Zebrafish, Cat, Dog, Japanese Medaka

Package
100 µl, 25 µl

Applications

Application Note

*Optimal dilutions/concentrations should be determined by the researcher.

Suggested dilution	Recommended dilution
WB	1:500-1:3000
ICC/IF	Assay dependent
IHC-P	Assay dependent

Not tested in other applications.

Observed MW (kDa) 65 kDa.

Properties

Form	Liquid
Buffer	PBS
Preservative	No preservatives
Storage	Store as concentrated solution. Centrifuge briefly prior to opening vial. For short-term storage (1-2 weeks), store at 4°C. For long-term storage, aliquot and store at -20°C or below. Avoid multiple freeze-thaw cycles.
Concentration	1 mg/ml (Please refer to the vial label for the specific concentration.)
Immunogen	Recombinant protein encompassing a sequence within the C-terminus region of human GAD65. The exact sequence is proprietary.
Purification	Affinity purified by Protein A.
Conjugation	Unconjugated

Note

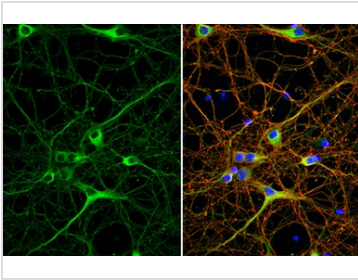
For laboratory research use only. Not for any clinical, therapeutic, or diagnostic use in humans or animals. Not for animal or human consumption.

Purchasers shall not, and agree not to enable third parties to, analyze, copy, reverse engineer or otherwise attempt to determine the structure or sequence of the product.



For full product information, images and publications, please visit our [website](#).

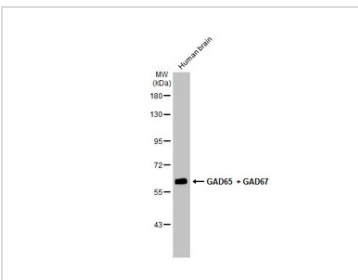
DATA IMAGES



GTX636487 ICC/IF Image

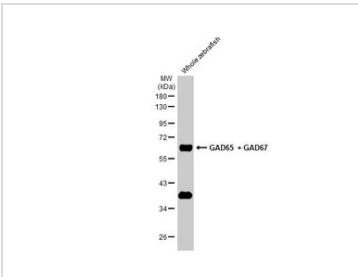
GAD65 + GAD67 antibody [HL1181] detects GAD65 + GAD67 protein at cytosol and cytoskeleton by immunofluorescent analysis.

Sample: DIV9 rat E18 primary cortical neuron cells were fixed in 4% paraformaldehyde at RT for 15 min. Green: GAD65 + GAD67 stained by GAD65 + GAD67 antibody [HL1181] (GTX636487) diluted at 1:250. Red: Tau, an axon marker, stained by Tau antibody [GT287] (GTX634809) diluted at 1:500. Blue: Fluoroshield with DAPI (GTX30920).



GTX636487 WB Image

Human tissue extract (30 µg) was separated by 7.5% SDS-PAGE, and the membrane was blotted with GAD65 + GAD67 antibody [HL1181] (GTX636487) diluted at 1:1000. The HRP-conjugated anti-rabbit IgG antibody (GTX213110-01) was used to detect the primary antibody.



GTX636487 WB Image

Whole zebrafish extract (30 µg) was separated by 10% SDS-PAGE, and the membrane was blotted with GAD65 + GAD67 antibody [HL1181] (GTX636487) diluted at 1:5000. The HRP-conjugated anti-rabbit IgG antibody (GTX213110-01) was used to detect the primary antibody.

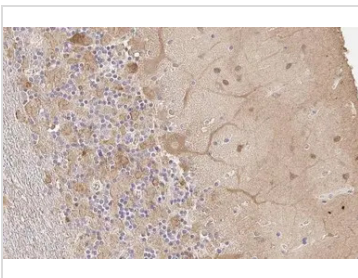


GTX636487 IHC-P Image

GAD65 + GAD67 antibody [HL1181] detects GAD65 + GAD67 protein at cell membrane and cytoplasm by immunohistochemical analysis.

Sample: Paraffin-embedded dog brain.

GAD65 + GAD67 stained by GAD65 + GAD67 antibody [HL1181] (GTX636487) diluted at 1:100. Antigen Retrieval: Citrate buffer, pH 6.0, 15 min



GTX636487 IHC-P Image

GAD65 + GAD67 antibody [HL1181] detects GAD65 + GAD67 protein at cell membrane and cytoplasm by immunohistochemical analysis.

Sample: Paraffin-embedded cat cerebellum.

GAD65 + GAD67 stained by GAD65 + GAD67 antibody [HL1181] (GTX636487) diluted at 1:100. Antigen Retrieval: Citrate buffer, pH 6.0, 15 min



For full product information, images and publications, please visit our [website](#).