

ZO-1 antibody [HL1185]

Cat. No. GTX636491

Host	Rabbit
Clonality	Monoclonal
Isotype	IgG
Applications	WB, ICC/IF
Reactivity	Human, Mouse, Rat, Cat, Dog

References (3)

★★★★☆☆ Review (1)

Package

100 µl, 25 µl

Applications

Application Note

*Optimal dilutions/concentrations should be determined by the researcher.

Suggested dilution	Recommended dilution
WB	Assay dependent
ICC/IF	1:100-1:1000

Not tested in other applications.

Observed MW (kDa) 250 kDa.

Properties

Form	Liquid
Buffer	PBS
Preservative	No preservatives
Storage	Store as concentrated solution. Centrifuge briefly prior to opening vial. For short-term storage (1-2 weeks), store at 4°C. For long-term storage, aliquot and store at -20°C or below. Avoid multiple freeze-thaw cycles.
Concentration	1 mg/ml (Please refer to the vial label for the specific concentration.)
Immunogen	Recombinant protein encompassing a sequence within the N-terminus region of human ZO-1. The exact sequence is proprietary.
Purification	Affinity purified by Protein A.
Conjugation	Unconjugated

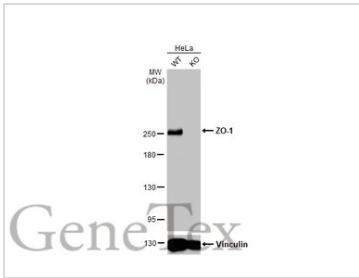
Note

For laboratory research use only. Not for any clinical, therapeutic, or diagnostic use in humans or animals. Not for animal or human consumption.

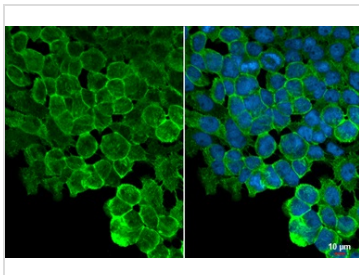
Purchasers shall not, and agree not to enable third parties to, analyze, copy, reverse engineer or otherwise attempt to determine the structure or sequence of the product.



For full product information, images and publications, please visit our [website](#).

DATA IMAGES

GTGX636491 WB Image

Wild-type (WT) and TJP1 knockout (KO) HeLa cell extracts (30 µg) were separated by 5% SDS-PAGE, and the membrane was blotted with ZO-1 antibody [HL1185] (GTGX636491) diluted at 1:1000. The HRP-conjugated anti-rabbit IgG antibody (GTGX213110-01) was used to detect the primary antibody.

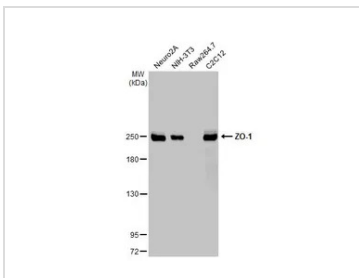

GTGX636491 ICC/IF Image

ZO-1 antibody [HL1185] detects ZO-1 protein at cell membrane by immunofluorescent analysis.

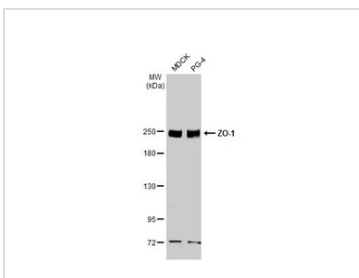
Sample: A431 cells were fixed in 4% paraformaldehyde at RT for 15 min.

Green: ZO-1 stained by ZO-1 antibody [HL1185] (GTGX636491) diluted at 1:500.

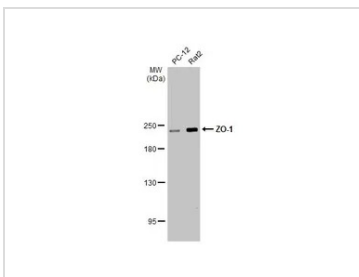
Blue: Fluoroshield with DAPI (GTGX30920).


GTGX636491 WB Image

Various whole cell extracts (30 µg) were separated by 5% SDS-PAGE, and the membrane was blotted with ZO-1 antibody [HL1185] (GTGX636491) diluted at 1:1000. The HRP-conjugated anti-rabbit IgG antibody (GTGX213110-01) was used to detect the primary antibody.


GTGX636491 WB Image

Various whole cell extracts (30 µg) were separated by 5% SDS-PAGE, and the membrane was blotted with ZO-1 antibody [HL1185] (GTGX636491) diluted at 1:1000. The HRP-conjugated anti-rabbit IgG antibody (GTGX213110-01) was used to detect the primary antibody.


GTGX636491 WB Image

Various whole cell extracts (30 µg) were separated by 5% SDS-PAGE, and the membrane was blotted with ZO-1 antibody [HL1185] (GTGX636491) diluted at 1:1000. The HRP-conjugated anti-rabbit IgG antibody (GTGX213110-01) was used to detect the primary antibody.



For full product information, images and publications, please visit our [website](https://www.genetex.com).