

## BNIP3L antibody [HL1203]

Cat. No. GTX636515

<b>Host</b>	Rabbit
<b>Clonality</b>	Monoclonal
<b>Isotype</b>	IgG
<b>Applications</b>	WB, ICC/IF, IHC-P
<b>Reactivity</b>	Human, Mouse, Rat

**Package**  
100 µl, 25 µl

## Applications

**Application Note**

\*Optimal dilutions/concentrations should be determined by the researcher.

Suggested dilution	Recommended dilution
WB	1:500-1:3000
ICC/IF	Assay dependent
IHC-P	Assay dependent

Not tested in other applications.

**Observed MW (kDa)** 26-40 kDa.

## Properties

<b>Form</b>	Liquid
<b>Buffer</b>	PBS
<b>Preservative</b>	No preservatives
<b>Storage</b>	Store as concentrated solution. Centrifuge briefly prior to opening vial. For short-term storage (1-2 weeks), store at 4°C. For long-term storage, aliquot and store at -20°C or below. Avoid multiple freeze-thaw cycles.
<b>Concentration</b>	1 mg/ml (Please refer to the vial label for the specific concentration.)
<b>Immunogen</b>	Carrier-protein conjugated synthetic peptide encompassing a sequence within the center region of human BNIP3L. The exact sequence is proprietary.
<b>Purification</b>	Affinity purified by Protein A.
<b>Conjugation</b>	Unconjugated

**Note**

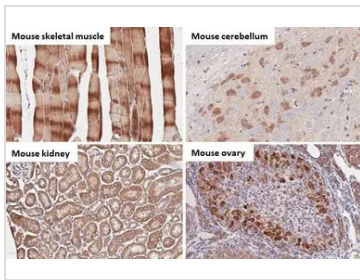
For laboratory research use only. Not for any clinical, therapeutic, or diagnostic use in humans or animals. Not for animal or human consumption.

Purchasers shall not, and agree not to enable third parties to, analyze, copy, reverse engineer or otherwise attempt to determine the structure or sequence of the product.



For full product information, images and publications, please visit our [website](#).

## DATA IMAGES

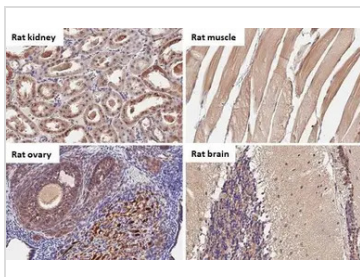
**GTX636515 IHC-P Image**

BNIP3L antibody [HL1203] detects BNIP3L protein by immunohistochemical analysis.

Sample: Paraffin-embedded mouse tissues.

BNIP3L stained by BNIP3L antibody [HL1203] (GTX636515) diluted at 1:100.

Antigen Retrieval: Citrate buffer, pH 6.0, 15 min

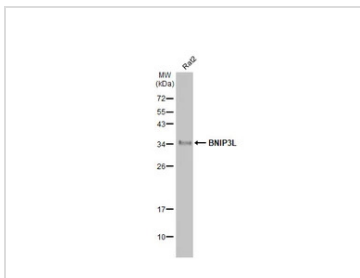
**GTX636515 IHC-P Image**

BNIP3L antibody [HL1203] detects BNIP3L protein by immunohistochemical analysis.

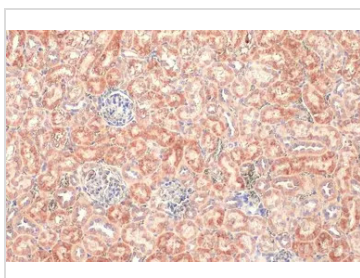
Sample: Paraffin-embedded rat tissues.

BNIP3L stained by BNIP3L antibody [HL1203] (GTX636515) diluted at 1:100.

Antigen Retrieval: Citrate buffer, pH 6.0, 15 min

**GTX636515 WB Image**

Whole cell extract (30  $\mu$ g) was separated by 12% SDS-PAGE, and the membrane was blotted with BNIP3L antibody [HL1203] (GTX636515) diluted at 1:1000. The HRP-conjugated anti-rabbit IgG antibody (GTX213110-01) was used to detect the primary antibody.

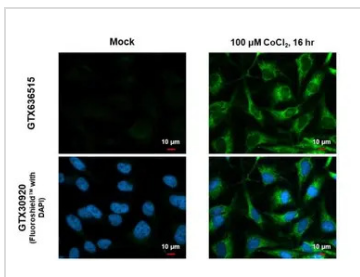
**GTX636515 IHC-P Image**

BNIP3L antibody [HL1203] detects BNIP3L protein at mitochondria by immunohistochemical analysis.

Sample: Paraffin-embedded mouse kidney.

BNIP3L stained by BNIP3L antibody [HL1203] (GTX636515) diluted at 1:100.

Antigen Retrieval: Citrate buffer, pH 6.0, 15 min

**GTX636515 ICC/IF Image**

BNIP3L antibody [HL1203] detects BNIP3L protein at mitochondria by immunofluorescent analysis.

Sample: Mock and treated HeLa cells were fixed in 4% paraformaldehyde at RT for 15 min.

Green: BNIP3L stained by BNIP3L antibody [HL1203] (GTX636515) diluted at 1:500.

Blue: Fluoroshield with DAPI (GTX30920).



For full product information, images and publications, please visit our [website](#).