

MMP2 antibody [HL1208]

Cat. No. GTX636525

Host	Rabbit
Clonality	Monoclonal
Isotype	IgG
Application	WB, ICC/IF
Reactivity	Human, Mouse

Package
100 µl, 25 µl

APPLICATION

Application Note

*Optimal dilutions/concentrations should be determined by the researcher.

Suggested dilution	Recommended dilution
WB	1:500-1:3000
ICC/IF	Assay dependent

Not tested in other applications.

Calculated MW 74 kDa. ([Note](#))

PROPERTIES

Form	Liquid
Buffer	PBS
Preservative	No preservative
Storage	Store as concentrated solution. Centrifuge briefly prior to opening vial. For short-term storage (1-2 weeks), store at 4°C. For long-term storage, aliquot and store at -20°C or below. Avoid multiple freeze-thaw cycles.
Concentration	1 mg/ml (Please refer to the vial label for the specific concentration.)
Immunogen	Recombinant protein encompassing a sequence within the center region of human MMP2. The exact sequence is proprietary.
Purification	Affinity purified by Protein A.
Conjugation	Unconjugated

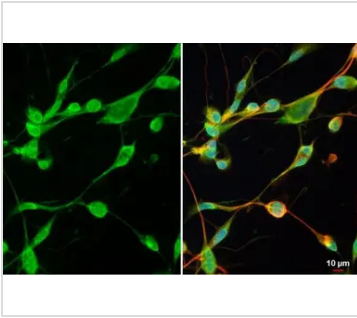
Note

For laboratory research use only. Not for any clinical, therapeutic, or diagnostic use in humans or animals. Not for animal or human consumption.

Purchasers shall not, and agree not to enable third parties to, analyze, copy, reverse engineer or otherwise attempt to determine the structure or sequence of the product.



For full product information, images and publications, please visit our [website](#).

DATA IMAGES

GTX636525 ICC/IF Image

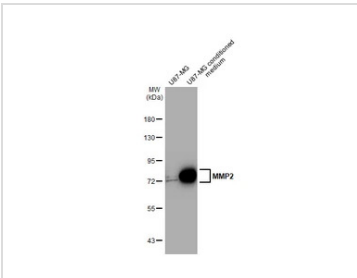
MMP2 antibody [HL1208] detects MMP2 protein at cytoplasm and nuclear envelope by immunofluorescent analysis.

Sample: U87-MG cells were fixed in 4% paraformaldehyde at RT for 15 min.

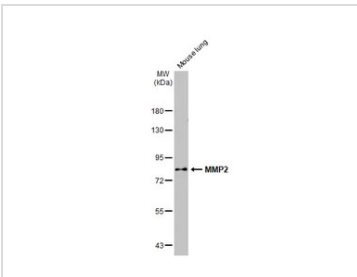
Green: MMP2 stained by MMP2 antibody [HL1208] (GTX636525) diluted at 1:500.

Red: alpha Tubulin, a cytoskeleton marker, stained by alpha Tubulin antibody [GT114] (GTX628802) diluted at 1:1000.

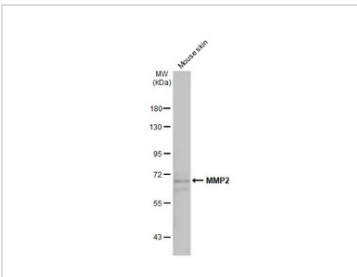
Blue: Fluoroshield with DAPI (GTX30920).


GTX636525 WB Image

U87-MG whole cell extract and conditioned medium (30 µg) were separated by 7.5% SDS-PAGE, and the membrane was blotted with MMP2 antibody [HL1208] (GTX636525) diluted at 1:1000. The HRP-conjugated anti-rabbit IgG antibody (GTX213110-01) was used to detect the primary antibody.


GTX636525 WB Image

Mouse tissue extracts (50 µg) was separated by 7.5% SDS-PAGE, and the membrane was blotted with MMP2 antibody [HL1208] (GTX636525) diluted at 1:1000. The HRP-conjugated anti-rabbit IgG antibody (GTX213110-01) was used to detect the primary antibody, and the signal was developed with Trident ECL plus-Enhanced.


GTX636525 WB Image

Mouse tissue extracts (50 µg) was separated by 7.5% SDS-PAGE, and the membrane was blotted with MMP2 antibody [HL1208] (GTX636525) diluted at 1:1000. The HRP-conjugated anti-rabbit IgG antibody (GTX213110-01) was used to detect the primary antibody, and the signal was developed with Trident ECL plus-Enhanced.



For full product information, images and publications, please visit our [website](https://www.genetex.com).